

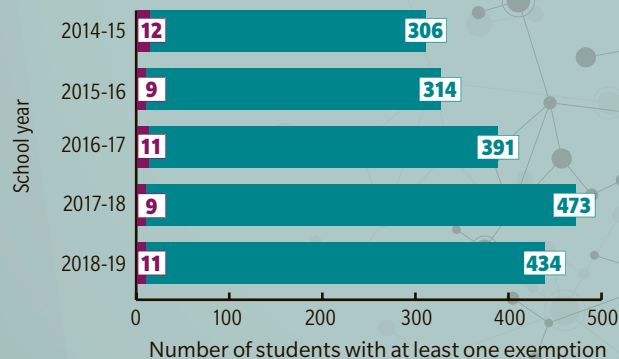
7 PAGES OF COVERAGE INSIDE

HEALTH CARE DIRECTORY 2019

RICHARDSON ISD VACCINATION EXEMPTIONS

The number of vaccination exemptions in the school district increased every year over the last several years until school year 2018-19, when a slight dip occurred. The measles vaccine is among several immunizations from which parents can request an exemption.

KEY: Medical exemptions ■ Conscientious exemptions ■



SOURCES: CENTERS FOR DISEASE CONTROL AND PREVENTION, RICHARDSON ISD/COMMUNITY IMPACT NEWSPAPER

REPORTED MEASLES CASES

1,022 measles cases reported in **28** states as of June 6

15 cases reported in Texas as of June 11

2 cases reported in Collin County as of June 11

1 case reported in Dallas County as of June 11

With more people opting out of vaccines, the U.S. is seeing the most prolific resurgence of measles in at least 20 years.

WHAT IS MEASLES?

- The Centers for Disease Control and Prevention states measles is a highly contagious virus that spreads through the air via coughing and sneezing.
- Symptoms include a runny nose, small white spots inside the cheeks, a high fever and a rash.
- Infected people are contagious to others from four days before through four days after the rash appears.

Hundreds of RISD parents continue to opt out of vaccines

BY **EMILY DAVIS**
AND **OLIVIA LUECKEMEYER**

Hundreds of parents in Richardson ISD have opted out of required immunizations for their children in recent years.

This past school year, 445 students were exempt from one or more vaccines—a 40% increase over five

years, according to RISD records. The vast majority of parents to those students—roughly 98%—requested exemptions for reasons of conscience.

Conscientious exemptions to required vaccines were legalized by the state in 2003 and include objections based on religious,

philosophical or moral reasons.

The share of RISD students with conscientious exemptions is low compared to the student body as a whole. Only 1.15% of the district's 39,108 students were exempt during the most recent school year.

This is only slightly lower than the

CONTINUED ON 20

Coworking offers flexibility, amenities to its members

BY **OLIVIA LUECKEMEYER**

Local business owners are looking to get in on the ground floor of a workplace trend taking DFW by storm.

There are four coworking options available in the city—The Drawing Board, DFW Innovation Center, Venture X and Communion Neighborhood Cooperative. Two more—The Common Desk and Hexa—will open by year's end.

Coworking businesses cater in part to members of the gig economy, or a growing group of people who earn income through independent contracts, side hustles or freelance work.

CONTINUED ON 24

INTERIOR OF THE DRAWING BOARD

DFW IS THE FASTEST-GROWING MARKET FOR COWORKING SPACE

IN THE NATION

-Colliers International

See where Richardson fits in on Page 24

RICHARDSON EDITION

VOLUME 1, ISSUE 10 | JUNE 21-JULY 19, 2019

CI COMMUNITYIMPACT.COM



6 IMPACTS
Now Open, Coming Soon & more

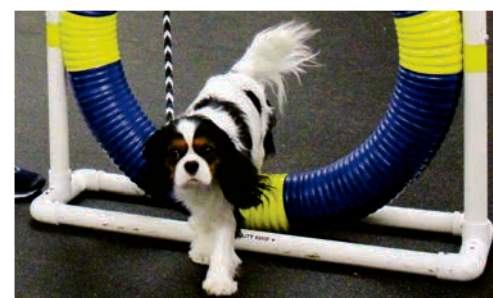


8 TO-DO LIST
Local events and dates of note

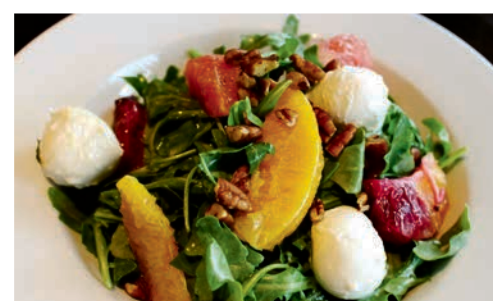
HEALTH CARE DIRECTORY 2019

15 HEALTH CARE SNAPSHOT
A look at the local health care industry

16 LISTINGS
Local clinics, urgent cares and more



22 BUSINESS FEATURE
What a Great Dog Training Center



23 DINING FEATURE
Jasper's

Don't let **heating** and **cooling** problems interrupt family time.



- ✓ Keep Your Home Comfortable
- ✓ Reduce Utility Bills
- ✓ Protect Your Investment



\$50 OFF
any
service
expires 8/1/19

**Texans Know Heat!
We Know Cooling!**

Rescue Me Hotline
214-247-7711
www.RescueAirTx.com

Rescue Air 
HEATING AND COOLING

TEXAS REPUBLIC BANK

Est. 1891

Richardson's bank for business



David Baty
President/CEO

Maureen McGuire
President - Mortgage

Craig Overstreet
President - Richardson

Kelly McBrayer
Senior Vice President

Julian Moolman
Banking Officer

Decision Makers - *every one.*

Local ownership

Local management

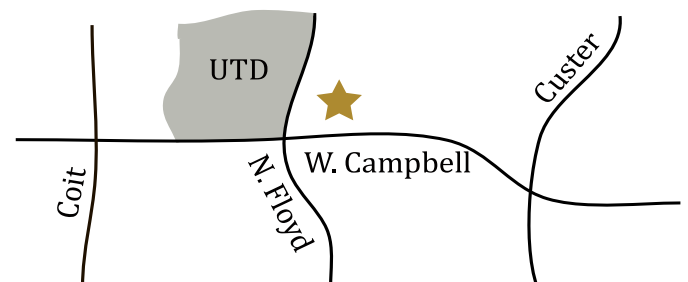
Local decisions

Banking like it oughta be!

www.texasrepublicbank.com

690 W. Campbell Road | Richardson, TX 75080

Next to UTD | 972-685-2040



Tired of the Wild Ride?



5.15%* for 5 Years

5.65%* for 7 Years

6.15%* for 10 Years

*includes 1% Bonus first year

Rates guaranteed all years

Tax Deferred Annuity

Earn more interest!

Single Premium deferred annuity rates are guaranteed for the full term of 5, 7 or 10 years. Should you choose to continue the annuity after the initial term, new guaranteed rates will be declared. Contracts issued by Atlantic Coast Life Insurance Company. Not FDIC insured. Rates vary by state.



Protecting Your Money in Any Market

Jamie H. Blumenthal, President of Retirement Strategies and Solutions, has over 30 years of experience in the area of Financial and Estate Planning. We specialize in working with retirees, helping them lower their taxes and increase their returns while improving the quality of their investments.



800-287-1667
www.retiretherightway.com



First Bank Building
1400 Preston Rd., #400,
Plano, TX 75093

The Drawing Board COWORKING SPACE

Shared Office Space With Flexibility and Style
Cowork • Connect • Collaborate

CALL TO SCHEDULE A TOUR



ASK ABOUT OUR
FREE MONTH OFFER

Visit THEDRAWINGBOARDDFW.COM

972-787-0158
1900 JAY ELL DR, RICHARDSON, TX 75081

KBSTUDIOS



**KITCHEN & BATH
MAKEOVERS MADE EASY!**

SIMPLE - QUICK - AFFORDABLE

**VISIT OUR SHOWROOM IN RICHARDSON
FOR THE LATEST DESIGN TRENDS!**

KBSTUDIOS.COM

972•677•9707

1373 W CAMPBELL ROAD, RICHARDSON, TX

COMMUNITY
IMPACT
NEWSPAPER
LOCAL. USEFUL. EVERYONE GETS IT.®

PUBLISHERS AND FOUNDERS

John and Jennifer Garrett

PUBLISHER-DALLAS METRO

Christal Howard

GENERAL MANAGER

Leanne Libby, llibby@communityimpact.com

EDITORIAL**EXECUTIVE EDITOR** Joe Lanane**MANAGING EDITOR** Valerie Wigglesworth**EDITOR** Olivia Lueckemeyer**STAFF WRITERS** Sherelle Black, Emily Davis, Lindsey

Juarez, Gavin Pugh, Luke Schumacher

COPY CHIEF Andy Comer**COPY EDITORS** Katherine Powell, Kasey Salisbury**ADVERTISING****SALES DIRECTOR** Tess Coverman**ACCOUNT EXECUTIVE** Tracy Ruckel**DESIGN****CREATIVE DIRECTOR** Derek Sullivan**ART PRODUCTION MANAGER** Aubrey Galloway**GRAPHIC DESIGNER** Chelsea Peters**BUSINESS****GROUP PUBLISHER** Traci Rodriguez**CHIEF OPERATING OFFICER** Claire Love**ABOUT US**

John and Jennifer Garrett began *Community Impact Newspaper* in 2005 in Pflugerville, Texas. The company's mission is to build communities of informed citizens and thriving businesses through the collaboration of a passionate team.

CONTACT US

7460 Warren Parkway, Ste. 160
Frisco, TX 75034 • 214-618-9001
communityimpact.com

PRESS RELEASES ricnews@communityimpact.com**SUBSCRIPTIONS** communityimpact.com/subscriptions**ADVERTISE WITH US**

For advertising inquiries, please contact us at
ricads@communityimpact.com or 512-989-6808.



Proudly
printed by:
**COMMUNITY
IMPACT**
PRINTING
COLOR. QUALITY. EVERY IMPRESSION MATTERS.™

© 2019 Community Impact Newspaper Co. All Rights Reserved. No reproduction of any portion of this issue is allowed without written permission from the publisher.

Introducing our annual Health Care Directory

It is officially summertime; school is out; and vacations have already started for most families. Summer is a great time to slow down the schedule, spend extra time with loved ones, and get out to experience local events and activities across the city.

June also means it is time for *Community Impact Newspaper's* annual Health Care Directory. In this edition, you will find a front-page story about the vaccination exemption rates in Richardson ISD and how this trend could impact the health of your local community.

This year's Health Care Directory (see pages 15-21) includes health care market data and information on the growing

trend of CBD stores you have probably seen popping up all over town. We have also included a listing of area pediatricians, OB-GYNs, family practice physicians, hospitals and urgent care facilities. We hope you will find this information useful when making decisions about health care for you and your family.

You'll also find a roundup of local election results with information on newly elected officials and upcoming races happening later this year (see Page 10).

We hope everyone has a fun and restful summer; make sure to follow communityimpact.com, and keep the feedback coming. We love hearing from our readers!



Leanne Libby

Leanne Libby
GENERAL MANAGER
llibby@communityimpact.com

ASK THE EDITOR



Olivia

Olivia Lueckemeyer
EDITOR
olueckemeyer@communityimpact.com

Do you have a question about how local government works or something going on in town? Send it to ricfeedback@communityimpact.com.

What is a zoning change request?

Zoning is the process of classifying lands into districts with specific regulations concerning building and structure designs, placement and uses.

Property owners or their designated representative may ask to change the zoning of their land or revise existing conditions relative to its use.

If a zoning change requests clears the planning commission, it proceeds to council for final approval. This is what happened June 3, when developers proposed new restaurants and retail at the former site of Richardson Square Mall.

Zoning changes tend to be long-lasting, which is why some residents push back on these requests if they think the proposed use will impede the flexibility of future development in a given area.

In this case, council members said they wanted a more concrete answer for what will become of the former Sears building before approving the proposed zoning change. In doing this, they said they protect residents from ending up with a project they might not be happy with.

FEATURED STORIES

6-7 IMPACTS

Now Open, Coming Soon & more

8 TO-DO LIST

Local events and dates of note

10 NEWS REPORT

Voters in Richardson face unusually long election season

12-13 AT THE CAPITOL

Gov. Abbott signs school finance and property tax reform bills

SPECIAL SECTION**HEALTH CARE DIRECTORY****15 HEALTH CARE SNAPSHOT**

A look at Richardson's health care market

16-17 LISTINGS

Local clinics, urgent cares and hospitals

22 BUSINESS FEATURE

What a Great Dog Training Center

23 DINING FEATURE

Jasper's

26 REAL ESTATE**27 IMPACT DEALS**

Hank N. Mulvihill, Jr., CFP®

SmithAnglin

14755 Preston Rd., Suite 700
Dallas, TX 75254
972-267-1244

HOW TO NAVIGATE MARKETS, MEDICARE, SOCIAL SECURITY AND LONG-TERM CARE.

Give Hank a call to discuss your concerns.

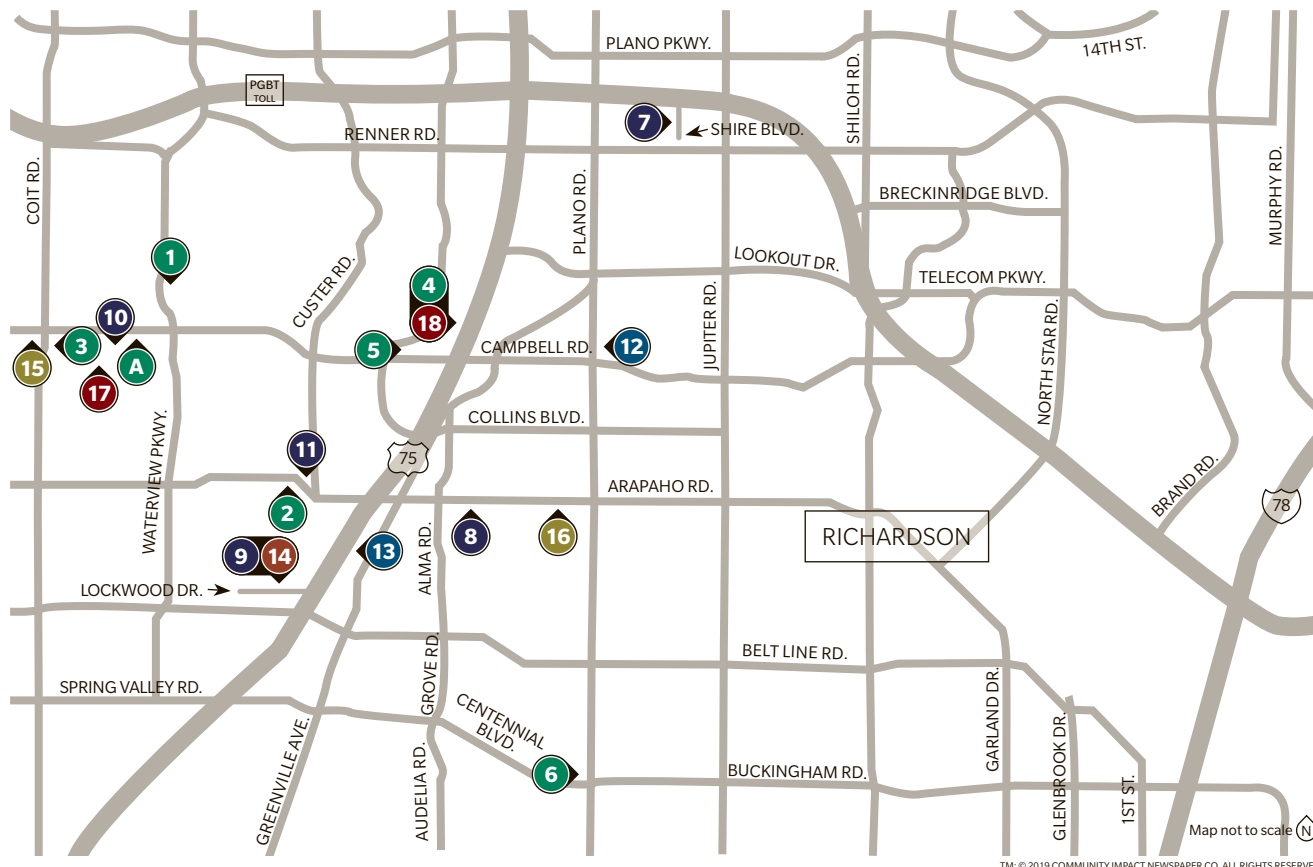
972-267-1244

Complimentary financial analysis is
available for qualified persons.

Smith Anglin Financial. Since 1967.
CPAs on staff.



Hank N. Mulvihill, Jr., CCM®, CWS®, CFP® has more than 30 years of experience as a licensed investment advisor and life and health insurance agent. He's the founder of FED FRIDAY®, and has appeared on CNBC, WFAA, and in numerous print publications.



TM, © 2019 COMMUNITY IMPACT NEWSPAPER CO. ALL RIGHTS RESERVED.

NOW OPEN

- 1 Aesthetic Clothing Boutique** opened May 21 at 1360 W. Campbell Road, Ste. 113, Richardson. The store aims to provide clothing for women of all sizes as well as shoes, jewelry, handbags and other accessories. 214-238-7032. www.aestheticclothingboutique.com
- 2 Pharm Haus** opened June 1 at 525 W. Arapaho Road, Ste. 3, Richardson. The business specializes in the sale of high-quality CBD, or cannabidiol, products, including capsules, edibles, topical creams and more. Cannabidiol is a non-intoxicating component of the hemp plant used for pain and stress relief. 214-434-1180. www.thepharmhaus.com
- 3 Philly Pretzel Factory** opened in early June at 1920 N. Coit Road, Ste. 211,

Richardson. The business serves Philadelphia-style pretzels with dough made fresh in-house. 214-484-2846. www.phillypretzelfactory.com

- 4 Pho Corner** opened in mid-June at 2069 N. Central Expressway, Ste. 100, Richardson. The restaurant, which has locations in Lewisville, The Colony and Frisco, serves spring rolls, sandwiches, a variety of pho, boba drinks and rice plates. 972-685-5092. www.phocorners.com
- 5 Supercuts** opened June 12 at 344 W. Campbell Road, Ste. 344, Richardson. The business offers a full range of services, including haircuts, styling and coloring. 469-248-3568. www.supercuts.com
- 6 We Heart CBD** opened in early June at 1332 S. Plano Road, Richardson. The industrial hemp and holistic alternatives business offers organic, non-genetically

modified hemp that is third-party lab-tested to guarantee it is free of contaminants and has zero THC, or the compound in marijuana that causes a high. CBD, or cannabidiol, is derived from hemp and used for relieving pain, stress and anxiety. 469-399-0151. www.weheartcbd.com

COMING SOON

- 7 Cambria Hotel Richardson-Dallas** will open in July at 3605 Shire Blvd., Richardson. The hotel will include a state-of-the-art fitness center, a bar and restaurant, an indoor pool and spacious rooms. www.cambriahotelrichardson.com
- 8 DFW CBD & Wellness** expects to open in early August at 800 E. Arapaho Road, Richardson. The business plans to offer quality, third-party-tested CBD, or cannabidiol, products. State-of-the-art float tanks

and infrared saunas will also be available for guests. Cannabidiol is a non-intoxicating component of the hemp plant used for pain and stress relief. This is the fourth CBD retailer that has announced plans to open in Richardson over the past month. www.dfwcbd.com

9 Saint Anita Barber & Studio will open by summer's end in Communion Neighborhood Cooperative, 514 Lockwood Drive, Richardson. Services include men's haircuts, beard trims and edge-ups. Women's haircuts are offered by consultation only. The business will also carry a selection of watches, candles, grooming products and other lifestyle goods. Cocktails are available to guests of legal drinking age. 469-831-9128. www.saintanita.co

10 The Sylvan Learning Center will open by the end of July at 1333 W. Campbell Road, Richardson. Services include personalized tutoring, academic coaching, and advancement and test preparation. At the end of September, the business will hold a grand opening ceremony, where members of the community can meet local teachers, certified instructors and the center's director. Specials and discounts on instruction will be available for local students. www.sylvanlearning.com

11 Tongue in Cheek Ice Cream should open in late June at 526 W. Arapaho Road, Richardson. The small-batch creamery will serve homemade ice cream made on-site as well as sorbet, nondairy and vegan options. Twenty-four unique flavors will be offered each month, including Chocolate Whiskey Cake, Bourbon Vanilla, Mango Habanero, salted caramel and more. The business will also offer grab-and-go ice cream pints, shakes and coffee. Guests can order inside or at the drive-thru window. 972-979-9902. www.tongueincheekicecream.com

RELOCATIONS

12 Backstage Florist relocated in early May from 2010 N. Plano Road, Ste. 107, Richardson, to 2050 N. Plano Road, Ste.

John O'Haugherty, Realtor
469-215-9739 · JOHOMESDALLAS.COM
JOHN.OHAUGHERTY@CBDFW.COM

Get the attention you deserve, with the tools that set you apart.
Call today for your **FREE** home evaluation!

COLDWELL BANKER US NAVY VETERAN · UTD MARKETING GRADUATE
RICHARDSON CHAMBER OF COMMERCE AMBASSADOR **JO HOMES**

Call for a free, no-obligation appointment
(972) 910-2426

Home Instead
SENIOR CARE®
To us, it's personal.

homeinstead.com/278

Whether you need someone to help a few hours a week or need more comprehensive assistance, Home Instead can help.

- Companionship Care
- Meals & Nutrition
- Medication Reminders
- Transportation
- Personal Care
- Household Duties

Each Home Instead Senior Care® franchise office is independently owned and operated. © 2019 Home Instead, Inc.

FEATURED IMPACT—NOW OPEN

A



COURTESY FAT STRAWS BUBBLE TEA CO.

Fat Straws Bubble Tea opened June 1 at 1251 W. Campbell Road, Richardson. The business serves bubble tea using fresh, flavored tapioca pearls made in-house as well as Japanese mochi donuts, classic teas, fruit smoothies, slushies and milkshakes. This is the company's fourth location in the Dallas-Fort Worth area as well as its largest due to the on-site commercial kitchen, where mochi donuts are made daily for branches companywide. 469-726-2034. www.fatstraws.com



COURTESY AESTHETIC CLOTHING BOUTIQUE

100, Richardson. The business sells fresh flowers, plants, keepsake gifts, gourmet baskets, sympathy and funeral flowers, baby gifts, anniversary flowers and centerpieces. Floral arrangement services for parties and special events are also available. 972-644-6666. www.backstageflowers.net

13 Fence Makeovers relocated June 3 to 512 N. Central Expressway, Richardson. The business, formerly located at 600 Ohio Drive, Plano, offers fence repair, restoration and installation services. 972-769-2555. www.fencemakeovers.com

EXPANSIONS

14 Communion Neighborhood Cooperative announced in late May plans for an expansion of its facility at 514 Lockwood Drive, Richardson. The outdoor patio will be enclosed and converted to a dedicated coffee bar, where guests can enjoy beverages and light fare. A new barber shop, Saint Anita Barber & Studio, will also be housed on-site. The facility will remain open throughout the course of construction, which should wrap up by summer's end. 972-200-7282. www.communioncooperative.com

ANNIVERSARIES

15 Nick's Sports Cards & Memorabilia, located at 7612 Campbell Road, Ste. 200,



COURTESY SAINT ANITA BARBER & STUDIO

Dallas, will celebrate its 30th anniversary July 12-14. The business offers a variety of hobby and sports cards, memorabilia and collectibles. Nick's Fan Cave is also available for sports fans to host a birthday or watch party. 972-248-2271. www.nicksfans.com

16 Quiroz Chiropractic, located at 1222 E. Arapaho Road, Ste. 330, Richardson, celebrated one year of business June 6. The business offers chiropractic services for children and adults to treat a range of issues, including neck, shoulder and back pain; joint pain; asthma; headaches; allergies; and more. 469-620-2006. www.quirozchiropractic.com

CLOSINGS

17 Dressbarn, located at 1361 W. Campbell Road, Richardson, will close following the company's May 20 announcement that it will shut down all 650 locations nationwide. The business sells clothing, shoes and accessories. An exact date for the closure is to be determined. 972-437-0967. www.dressbarn.com

18 Nam Noodles and More closed in early May at 2069 N. Central Expressway, Ste. 100, Richardson. The quick-serve cafe served authentic Vietnamese and Southeast Asian cuisine using locally grown, organic produce and MSG-free ingredients. www.namnoodlesandmore.com

JASPER'S

GOURMET BACKYARD CUISINE



HAVE YOU HAD OUR SCALLOPS?

Also Featuring Five Spice Calamari, Salads, Rotisserie Turkey BLT, Prime Dip Sandwich, Backyard Brisket Cheeseburger, Pan Seared Trout, Baby Back Ribs and more.

CITYLINE

1251 State Street | Richardson | TX | 75082 | 214.716.2610

abacusjaspers.com



Tile Land

Home Remodeling

YOUR VISION, OUR TEAM!

TURNKEY CUSTOM REMODELING FOR THE WHOLE HOME.

Kitchen Remodels • Bathroom Remodels • Install Floors and Walls • Room Additions
Custom Cabinets • Custom Shutters • Install Custom Counter Tops • Design

WE CARRY

Tile • Quartz • Carpet • Luxury Vinyl
Granite and other Natural stone

SALE

ENGINEERED WOOD
\$2.29 per sq. ft



Visit our showroom and be inspired!

**318 S. Central Expressway, Ste #106A
Richardson, TX 75080**

Serving Richardson and the
North Dallas area since 2003



Showroom Hours

**Mon-Fri: 9am-6pm, Sat: 10am-5pm
Sun: Closed**

LOCALLY OWNED AND OPERATED
FINANCING AVAILABLE

Call us today for a free in-home estimate **214-361-5820 • WWW.TILELANDUS.COM**



EXTRAORDINARY, EXCEPTIONAL & INSPIRING!
 See the 2019-2020 Season Brochure
 online at www.eisemanncenter.com
 Single tickets on sale Mon, Jul. 8, 2019



Christmas the Cowboy Way
 with Riders in the Sky
 and The Quebe Sisters
 Tue, Dec. 17, 2019 at 7:30 pm



Mandy Patinkin
 in Concert: *Diaries*
 Fri, Jan. 17, 2020 at 7:30 pm



Asleep At The Wheel
 50th Anniversary Tour
 Sat, Mar. 28, 2020 at 7:30 pm

These Shows Sponsored by Methodist Richardson Medical Center

Take a Peek Behind the Curtain.
Become a "Friend" today

to support Community Outreach through *Eisemann Educates*
 and receive invitations to our *Eisemann Center Presents Meet the Artist*
 receptions and the 2020-2021 Season Preview Party May 7, 2020
www.eisemanncenter.com/Friends

Shows • Concerts • Corporate Presentations & Celebrations • Benefits
 Graduations • Multi-Media Presentations • Awards Ceremonies
 Private Functions • Press Conferences • Product Launches • Annual Meetings

CHARLES W. EISEMANN CENTER



Charles W.
EISEMANN CENTER

972.744.4600
eisemanncenter.com

• Prime location off North Central Expressway,
 south of President George Bush Turnpike at
 2351 Performance Drive in Richardson

• Readily adjacent to DART Rail's Galatyn Park Station

TO-DO LIST JULY



JULY 4 WISH AMERICA A HAPPY BIRTHDAY BRECKINRIDGE PARK

The city holds its annual family-friendly July Fourth celebration at Breckinridge Park. Attendees are encouraged to bring picnics, blankets and lawn chairs. Grills are permitted but only on hard surfaces. The event includes a patriotic salute concert by the Richardson Community Band, bounce houses, a climbing wall, food concessions and fireworks. Parking is limited; a free round-trip shuttle service is offered from off-site parking locations at 3300 Renner Road and 2791 Telecom Parkway. 6 p.m. Free. Breckinridge Park, 3555 Park Vista Road, Richardson. 972-744-4100. www.cor.net

COMPILED BY OLIVIA LUECKEMEYER

JULY

05 AND 06 MOVIE SERIES CONTINUES

Dog Haus Biergarten hosts Sunset Cinema, a series of free outdoor movies every Friday and Saturday night during the summer in the Richardson Restaurant Park courtyard. 9 p.m. Free. 744 S. Central Expressway, Richardson. 214-935-9121. <http://richardson.doghaus.com>

06 LEARN TO CONCOCT THE PERFECT SUMMER COCKTAIL

Tricky Fish and Roxor Gin host this event as part of the CityLine Class Series, where guests learn to create cocktails ideal for the summer season. Ticket prices include two free cocktails and heavy appetizers. 6-8 p.m. \$20. Tricky Fish, 1251 State St., Richardson. 972-437-3474. www.citylinedfw.com/events

11 THROUGH 14 LAUGH AT A COMEDY SHOW

"Old Jews Telling Jokes" features comedians over 60 years old gathering to tell their favorite jokes about life as an American Jew. The show runs Thursday-Sunday during the second, third and fourth weeks of July at the Eisemann Center. 2 p.m., 7 p.m. and 8 p.m. showings. \$39-\$65. 2351 Performance Drive, Richardson. 972-744-4650. www.eisemanncenter.com

12 THROUGH 14 NICK'S CELEBRATES 30 YEARS

Local business Nick's Sports Cards & Memorabilia celebrates its 30-year run at Coit and Campbell roads with a three-day anniversary party. Included in the celebration are prizes, giveaways and food. All day. Free to attend. 7612 Campbell Road, Ste. 200, Dallas. 972-248-2271. www.nickscards.net

13 MEET EXOTIC WILD ANIMALS

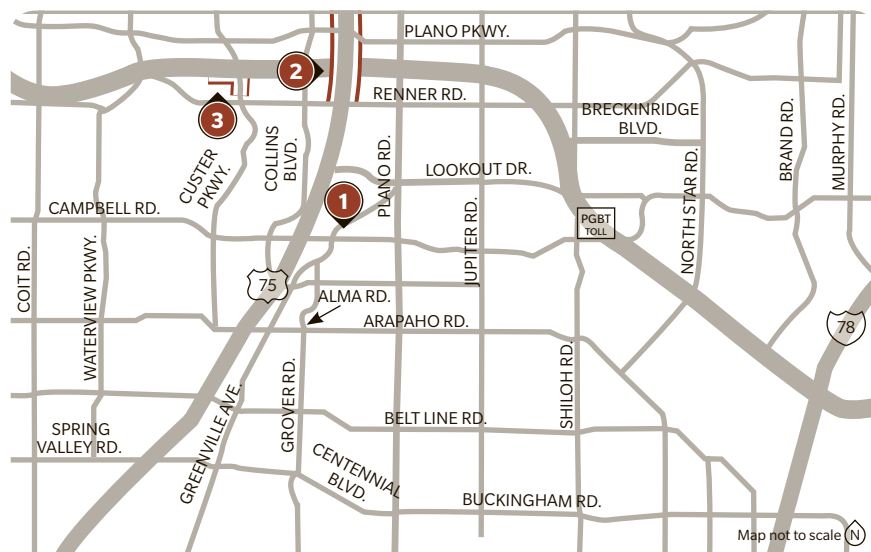
Educational program Wild Things Zoofari brings a gecko, an endangered ruffed lemur, an armadillo and more to this event at the library. Attendees learn about habitats and habits and also have a chance to pet the animals. 3 p.m. Free. Basement Program Room, 900 Civic Center Drive, Richardson. 972-744-4350. www.cor.net/departments/public-library

19 TOUR, SIP AND SHOP AT WHOLE FOODS MARKET

The event kicks off at the bar where each guest receives a complimentary glass of beer or wine. The tour showcases many unique things about Whole Foods Market at CityLine and includes samples from every department. Team members also recommend their favorite items. Each guest leaves with a goody bag. 6 p.m. \$8. 1411 E. Renner Road, Richardson. 214-273-0902. www.citylinedfw.com/events



Find more or submit events at communityimpact.com/event-calendar.
 Event organizers can submit local events online to be considered for the
 print edition. Submitting details for consideration does not guarantee publication.



RECENT UPDATES

1 Galatyn Park Station platform extension

Dallas Area Rapid Transit's platform extension project—originally scheduled to begin in March but delayed to ensure minimal impact on customers and businesses—began in late May. The project will lengthen 28 rail-station platforms to enable more cars on DART trains. Work is expected to continue at the Galatyn Park station for four months. Rail service will not be disrupted, but riders need to be aware that there will be an active construction zone at that station. Users of the Galatyn Park shuttle buses should note that the drop-off/pickup spot at Galatyn Park Station will be moved slightly north.

Timeline: May 2019-end of 2021

Cost: \$128.8 million

Funding sources: DART, State Mobility Fund, grants

2 Improvements to US 75 interchange with President George Bush Turnpike

Work should wrap up in August on the Texas Department of Transportation project to overhaul the US 75 interchange with President George Bush Turnpike. The project was initially expected to be complete in May, but inclement weather has caused a delay. Once complete, the project will add access ramps to and from the turnpike and additional lanes along US 75. As of June 6, the project was estimated at 91% complete. Ongoing work includes construction of retaining walls, pavement removal, and installation of roadway and railroad gate support. The 15th Street exit in Plano is scheduled to reopen by the end of August.

Timeline: May 2016-August 2019

Cost: \$37.5 million

Funding sources: TxDOT and North Texas Tollway Authority funds

3 Custer Parkway and President George Bush Turnpike lane widening

Crews are working to widen deceleration lanes at the intersection of President George Bush Turnpike and Custer Parkway. Signal work at Custer and Greenside Drive is currently underway, and completion is expected by the end of June. The turnpike's eastbound right-turn lane construction at Custer is scheduled to begin in June and finish in August. Signal improvements at Custer and the turnpike are expected to be complete by fall.

Timeline: December 2018-fall 2019

Cost: approximately \$57,000

Funding source: LG Custer 190 LLC

HOW IT WORKS

How do I report a vehicle that is emitting excessive smoke?

A state program allows Texans to report vehicles with excessive tailpipe smoke.

Anyone who notices a vehicle emitting heavy smoke from the tailpipe for 10 seconds or longer can file a report over the phone or online with the Texas Commission on Environmental Quality.

The reporting system is not an enforcement program. But drivers are informed by mail that they can be ticketed and fined for operating a smoking vehicle. Violators can be fined up to \$350 for the first offense, according to state law.

Observers can file reports by calling 800-453-7664 or by visiting www.tceq.texas.gov and searching "Smoking Vehicle Program."

All information on this page was updated as of 6/11/19. News or questions about these or other local transportation projects? Email us at ricnews@communityimpact.com.

Law Office of Dana D. Huffman



- BERKNER HIGH
- STEPHEN F. AUSTIN
- TEXAS WESELYAN LAW
- 24 YEARS IN PRACTICE
- WILLS
- ESTATE PLANNING
- PROBATE
- MEDIATION

1143 Rockingham,
Suite 107, Richardson, TX

972-713-7757 • WWW.HUFFMAN.LAW

Looking for Fresh vintage finds?

Richardson Mercantile

ANTIQUES, COLLECTIBLES, DECOR.

VINTAGE • VINYL ALBUMS

• HANDMADE • ONE-OF-A-KIND

• ANTIQUE • ECLECTIC • COLLECTIBLES

• SHABBY CHIC DECOR • JEWELRY

• CLOTHING • FURNITURE • DOLLS & TOYS • PERSIAN RUGS • AND MORE!

NOW ACCEPTING NEW DEALERS!

972-479-9990 • 101 S. Coit Rd. Richardson, TX • richardsonmercantile@gmail.com

WE CAN MAKE YOUR MEMORIES LAST FOREVER



YOUR WEDDING PHOTOS PRINTED
ON CANVAS OR FINE ART PAPER
ENHANCED WITH THE PERFECT FRAME
STARTING @ \$130.00

DON'T LET THEIR
HARD WORK GO UNNOTICED
DIPLOMA FRAMES MAKE
WONDERFUL GIFTS
STARTING @ \$90.00



FINE ART GICLEES

CANYON CREEK ART

QUALITY CUSTOM FRAMING

1360 W CAMPBELL CANYONCREEKART.COM 972-690-6216

VOTERS IN RICHARDSON FACE UNUSUALLY LONG ELECTION SEASON

Election season in Richardson was prolonged this year after unforeseen circumstances delayed the Richardson ISD school board election. The makeup of City Council for the next two years became fully realized following a runoff election June 8. And area voters can now look forward to electing three members to the RISD board of trustees in November.

2019

JAN. 8

CITY COUNCIL

Scott Dunn announces he will not seek re-election to Richardson City Council.



JAN. 17

SCHOOL BOARD

After a year of negotiations with plaintiff and former trustee David Tyson Jr., RISD settles a lawsuit alleging that its use of an at large electoral system violates the Voting Rights Act. As a result, five board members now represent single-member districts, while two oversee the district as a whole.

FEBRUARY

SCHOOL BOARD

Trustees unanimously approve a new majority single-member district voting map. A federal judge approves RISD's request to postpone its scheduled May election to Nov. 5.

MARCH

SCHOOL BOARD

RISD trustee Katie Patterson announces she will not run when her term expires in November.



MAY 4

CITY COUNCIL

Kyle Kepner (top) and Ken Hutchenrider (bottom) are elected to City Council. The race for Place 3 proceeds to a runoff when none of the three candidates earns 50% of the vote.



MAY 20

SCHOOL BOARD

Trustees finalize a plan for rolling out RISD's new electoral system. It is determined that seats occupied by board members Eron Linn, Karen Clardy and Katie Patterson will be placed on the ballot in November.

JUNE 8

CITY COUNCIL

Janet DePuy wins the municipal runoff election for Place 3. The makeup of council for the next two years is now complete.



OCT. 21-NOV. 1

SCHOOL BOARD

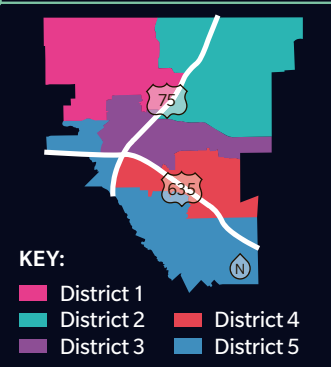
Voters in RISD can cast ballots early in trustee races.

NOV. 5

SCHOOL BOARD

Election Day

Place	Name	Returning or new?
Place 1	Bob Dubey	Returning
Place 2	Mark Solomon	Returning
Place 3	Janet DePuy	New
Place 4	Kyle Kepner	New
Place 5	Kenneth Hutchenrider	New
Place 6	Steve Mitchell	Returning
Place 7	Mayor Paul Voelker	Returning



RISD election cycle	Current place	Held by	New district
Nov. 2019	Place 3	Karen Clardy	District 5
Nov. 2019	Place 4	Katie Patterson	District 4
Nov. 2019	Place 5	Eron Linn	District 2
May 2020	Place 6	Justin Bono	At large 6
May 2020	Place 7	Kristin Kuhne	District 3
May 2021	Place 1	Jean Bono	District 1
May 2021	Place 2	Kim Caston	At large 7

SOURCES: CITY OF RICHARDSON, RICHARDSON ISD/COMMUNITY IMPACT NEWSPAPER

DESIGNED BY
CHELSEA PETERS
COMPILED BY
OLIVIA LUECKEMEYER

Good news. Rates just got lower.

Stephanie South, Agent
189 N Plano Rd
Richardson, TX 75081
Bus: 972-690-0618
stephanie.south.nysu@statefarm.com

I'm excited to announce auto insurance rates just went down. I can help you find coverage that works for you.
LET'S TALK TODAY.

State Farm Mutual Automobile Insurance Company, State Farm Indemnity Company, Bloomington, IL 1901155
State Farm County Mutual Insurance Company of Texas, Richardson, TX

U Kitchen & Bath LLC

10'X10' kitchen:
only \$3999.99 with installation

FREE SINK included

972-998-6634
ukitchenandbath850@gmail.com
www.u-kitchenandbath.com

850 E Arapaho Rd, Suite# 220,
Richardson, TX 75081

Premier kitchen and bathroom remodeling and wood floor installation

FINANCING AVAILABLE

It's Not Too Late for Summer Camp Fun!

ENROLL TODAY!

LONE STAR

Language Academy

ENROLL NOW FOR SUMMER FUN!

www.lonestartx.org
@lonestarlanguagelacadey

Enriching, affordable, and fun - our summer camp keeps your learner engaged and growing this summer.

Visit lonestartx.org/summer-camp/ or Call (972) 244-7220 to enroll.

STEM

ARTS

WATER PLAY

COOKING

SPORTS

DANCING

New mural adorns facade of Richardson business

RICHARDSON Passersby on Greenville Avenue downtown may notice a new mural has been added to the outside of SmartLooks Window & Wall Decor.

The artwork features two children on a swing hanging from a rose vine. The vine spans the width of the building's south facade.

Rod W. Marsh painted the mural. For years, Marsh has helped others realize their vision by taking their ideas and turning them into artwork, according to his artist statement provided to *Community Impact Newspaper*.

"Rod was awesome in putting into reality the overall concept for this mural design, which I sketched out very primitively on a sheet of paper," SmartLooks co-owner Valerie Kernan said.

It is Marsh's hope that each piece he creates will provoke thought and mean something different to each viewer, according to his artist statement.



The mural is painted on the south facade of SmartLooks Window & Wall Decor.

Kernan said she also plans to have the rest of the building repainted in anticipation of the downtown revitalization.

The Main Street revitalization project seeks to improve the flow of traffic and beautify the downtown area by adding more open space and improving infrastructure.

"We have had really positive feedback [on the mural]," Kernan said. "[We] are so happy to begin the face-lift of our beloved downtown Richardson."

Council questions pitch for site of former mall

RICHARDSON A portion of the former Richardson Square Mall site may see a resurgence of restaurants and retail.

City Council heard plans June 3 for redevelopment of the 13.2-acre site. The effort would revamp the former Sears building as well as construct four new buildings.

Lease negotiations with Chipotle, Jason's Deli and Starbucks are in the works, according to Matt Moore with Claymoore Engineering. All three would include a drive-thru, he said.

It is unclear how the 135,702-square-foot former Sears building will be used; however, site owner Frank Mihalopoulos said he is looking into filling it with specialty retailers.

Several council members and residents expressed reluctance over green-lighting the project without definitive plans for the Sears building.

In the end, council voted 5-1 to table the issue until July 22. Mayor Paul Voelker opposed.

NUMBER TO KNOW

\$18.8B

The estimated total value of all properties in Richardson for fiscal year 2019-20, according to preliminary data from both of Richardson's appraisal districts. This is a nearly 12% annual increase, according to the city's finance department. The data does not take into consideration resident protests and is subject to change once values are certified in late July. Once certified, the annual tax roll increase is projected to drop to 9.4% and total \$18.4 billion, the city's finance department said.

CITY HIGHLIGHTS

RICHARDSON A resolution approved by council June 10 authorized the parks department to apply for a \$250,000 grant for Breckinridge Trail additions. The grant will be applied for under Collin County's Parks & Open Space Project Funding Assistance Program and requires a local match.

Funding will improve two segments of trail. The first will allow for safe crossing under Renner Road by connecting Ruth Back Toler Park to Breckinridge Park. The second will allow for continuous access to the park by connecting parking lots on Moroney and Beck drives. The grant application will be submitted to the county in July, and awards will be announced in October. If awarded, construction on the project will begin within six months.

NORTH TEXAS Beginning July 1, TollTag rates will increase about a penny more per mile, from an average of 18 cents per mile to about 19 cents per mile, according to the North Texas Tollway Authority, which manages area toll roads. The price hike is part of NTTA's toll rate schedule that rolls out increases every other year.

Funding secured for local Cotton Belt trail

RICHARDSON A hike and bike trail adjacent to Dallas Area Rapid Transit's future Cotton Belt rail line in Richardson is now fully funded.

Segment 21, a half-mile stretch between Waterview Parkway and the future Cotton Belt station at the University of Texas at Dallas, was the last unfunded piece within city limits.

On June 13, the Regional Transportation Council of the North Central Texas Council of Governments unanimously agreed to allocate \$460,851 toward construction of the segment. It plans to use money from its federally funded Transportation Alternatives Set-Aside Program.

Richardson City Council members in February authorized staff to apply for funding through the program. A 20% match was required by NCTCOG, but Richardson upped the ante by offering a 33% match. Twenty-nine projects were submitted, but only seven were chosen for funding.

Trustees adopt policy to ensure equity for students

RICHARDSON ISD Equal footing for students in Richardson ISD is now mandated by district policy.

The district's board of trustees adopted the RISD Equity, Diversity, Inclusion Policy in a unanimous 7-0 vote June 10. Approval of the policy comes months after RISD settled a lawsuit brought by a former trustee accusing it of Voting Rights Act violations that favor white board members and students.

Over the past six months, members of the district's Equity Council met to develop the policy, which seeks to "establish a framework to eliminate any bias, prejudice, or unlawful discrimination that may affect student achievement and learning experiences and to promote learning and working environments that welcome, respect, and value equity, diversity and inclusion."

"This is an opportunity where we get to move our mission, our vision, our values and our focus from mere words to action," said Angie Lee, district director of Diversity, Equity and Inclusion.

The four-page policy addresses allocation of district resources,



The board of trustees spent many months reviewing the draft policy before approval.

student representation in programs, hiring practices, achievement/opportunity gaps and staff training.

"It is our collective responsibility to make sure this is not just words on paper," trustee Katie Patterson said.

RISD is the first district in North Texas to adopt an equity policy. Other districts are already reaching out to the district to learn more about the process, Lee said.

Once Superintendent Jeannie Stone had "enthusiastically recommended" that the board approve the policy, Patterson moved to adopt it. Trustee Kristin Kuhne seconded. After its approval, trustees and members of the public gave a standing ovation.

MEETINGS

Richardson City Council meets July 8 at 6 p.m. at City Hall, 411 W. Arapaho Road, Richardson. www.cor.net

Richardson ISD meets July 13 and 19 at 6 p.m. at the district's Administration Building, 400 S. Greenville Ave., Richardson. www.risd.org

Plano ISD meets June 25 at 7 p.m. at the Administration Center, 2700 W. 15th St., Plano. www.pisd.edu

For Plano ISD meeting coverage, visit communityimpact.com/pln.



For instant coverage of these meetings, follow us on Twitter: [@impactnews RIC](https://twitter.com/impactnews RIC)

Gov. Greg Abbott signs landmark \$11.6 billion school finance measure

Gov. Greg Abbott has signed into law one of lawmakers' biggest achievements this year, a massive overhaul of Texas' long-beleaguered school finance system.

Abbott put his signature on House Bill 3 during a triumphant ceremony June 11 at Parmer Lane Elementary School in Austin. He was flanked by Lt. Gov. Dan Patrick, House Speaker Dennis Bonnen and several lawmakers involved in the effort.

"We did something that was considered to be highly improbable, and that is to be able to transform public education in the state of Texas without a court order forcing us to do so.

"This one law does more to advance education in the state of Texas than any law I have seen in my adult lifetime," Abbott said.

The bill's signing represented a

capstone to state leaders' laserlike focus on reforming school finance and property taxes since the beginning of the 2019 legislative session. Abbott signed the priority property tax legislation, Senate Bill 2, during a ceremony June 12.

The \$11.6 billion school finance measure includes about \$6.5 billion in new public education spending, plus about \$5.1 billion devoted to lowering Texans' property tax bills.

The spending will increase per-student base funding by about 20%. It includes money to give teachers raises; fund free, full-day pre-K for eligible 4-year-olds; and reduce the amount of money wealthy districts must spend to subsidize poor districts through the state's recapture program, known as "Robin Hood."

It also, controversially, includes money for districts that want to start merit pay programs, giving bonuses of between \$3,000 and \$12,000 to their higher-rated teachers. And it provides money for high-needs and rural school districts that need help



Gov. Greg Abbott (center) holds up House Bill 3 after signing it into law in Austin on June 11.

to incentivize teachers to work there.

Lawmakers have estimated that the bill will lower tax rates by an average of 8 cents per \$100 valuation in 2020 and 13 cents in 2021.

That would mean a tax cut of \$200 for the owner of a \$250,000 home in

2020 and \$325 in 2021.

At the bill-signing ceremony, state leaders hailed the unity that they say allowed them to finally get school finance reform across the finish line.

Matthew Watkins contributed reporting.

THE MOST AWARDED MEAT MARKET IN COLLIN COUNTY FOR OVER 20 YEARS



**10% OFF
OF TOTAL
PURCHASE.**

MUST PRESENT
THIS COUPON.
EXPIRES 7-6-19.

HEAT UP
your **FOURTH of JULY
CELEBRATION**

WITH

**WAGYU BEEF BACK RIBS
CHEESEBURGER SAUSAGE**

SAUSAGE - SMOKING WOODS

1301 W. PARKER RD., SUITE #100, PLANO, TX | 972-633-5593
TUESDAY-FRIDAY, 10:00 A.M. TO 6:00 P.M. AND SATURDAY, 9:00 A.M. TO 5:00 P.M.

Custer Rd.

Alma Dr.
W. Parker Rd.



Bill intended to limit explosive property tax growth is officially law

Against the backdrop of an Austin burger joint struggling with its property taxes, Gov. Greg Abbott signed into law June 12 an expansive reform measure meant to slow the growth of Texans' property tax bills, long a priority issue for GOP state leaders.

The ceremonial bill signing was a victory lap for top Republicans, who spent the legislative session hammering the issues of school finance and property tax reform.

On June 11, they gathered at an Austin elementary school to witness the signing of a public education package that includes about \$5.1 billion to lower Texans' property tax bills.

"That [school finance bill] will be eroded by increases in property taxes in future years without Senate Bill 2," Abbott said.

Senate Bill 2 makes an array of changes to the property appraisal and tax systems. New requirements, including that tax rates and other information be posted in an online database, are meant to make the process more transparent and easier for taxpayers to understand.

But the measure includes one controversial provision that requires many cities, counties and other taxing units to hold an election if they wish to raise 3.5% more property tax revenue than the previous year. The growth rate excludes taxes levied on new construction and can be averaged over three years, allowing some taxing units to exceed the 3.5% threshold.

Municipal officials have repeatedly said the 3.5% election trigger will hamstring their budgets and hamper their ability to provide public safety and other local services. Moody's Investors Service, a credit-rating agency, issued a May analysis that said the law would lead to "minimal" homeowner savings and "hurt local

governments substantially."

In 2017, the Legislature twice failed to pass similar property tax reform measures that could have set the election trigger higher, between 4% and 6%.

Since the 1980s, taxing units have been constrained to 8% annual property tax growth, but voters have had to petition for an election to roll back the increase, a requirement some lawmakers deemed onerous.

"What this does is achieve something that has never been done before with regard to property tax reforms of the past," Abbott said.

State leaders have said the new law will slow the pace at which property tax bills grow and will update a growth rate set during a period of high inflation.

Community colleges, hospital districts and small taxing units—with rates of 25 cents per \$100 of taxable value or less—will need voter approval to increase a property tax levy by more than 8% annually.

Emma Platoff contributed reporting.

OTHER BILLS SIGNED INTO LAW

Gov. Greg Abbot has signed several key bills from the Texas Legislature.

Senate Bill 11: school safety

- The bill will strengthen mental health initiatives in schools, require access to a telephone or other electronic communication in classrooms, and create teams to identify potentially dangerous students.

Senate Bill 21: raise the smoking age

- This measure will raise the legal age to buy tobacco products from 18 to 21, except for military personnel.

House Bill 1631: red-light cameras

- Though the ban goes into effect immediately, red-light cameras could still linger in some communities for a few more years, as the bill only prevents cities from renewing their current contracts with vendors.



For more information, visit communityimpact.com/capitol



Fabric • Notions • Pre-cuts
Custom Memory Quilts • Longarm Quilting

Locally owned and operated for **10 years**. Expertise, technology and the **best customer service** around!

20% OFF
FABRIC & NOTIONS

MUST PRESENT COUPON. OFFER EXPIRES 7/31/19. DOES NOT APPLY TO PREVIOUSLY MARKED DOWN ITEMS OR QUILTING SERVICES.



7989 Belt Line Rd. #142, Dallas • 972.661.0044 • www.SewLetsQuiltIt.com

We Know Insurance.

Serving the Richardson Area since 1993!

- | | |
|-----------------------------------|------------------|
| ■ Commercial Insurance | ■ Auto Insurance |
| ■ Homeowner and Renters Insurance | ■ Life Insurance |



Sandy Garza
Owner, Agent

Call today for a quote:

972-889-1833

www.weknowinsurance.com

2100 Lakeside Blvd Ste 170 • Richardson

REQUEST FOR PUBLIC INPUT

Public participation is very important to the Hazard Mitigation Planning Process.
The City of Richardson is requesting your input and comments about the hazards in our community.



Public Participation Survey available at:
<https://www.surveymonkey.com/r/DallasCountyHMAP>

GET YOUR GROOVE BACK AFTER A STROKE?

Better. Believe it.



When it comes to treating stroke, not all neuroscience programs are equal. As a designated Comprehensive Stroke Center, we meet the standards proven to support better outcomes. So we can help patients recover without missing a beat. Learn more at [1.844.BSW.DOCS](tel:1844BSWDOCS) or BSWHealth.com/PlanoBrainandSpine.



Physicians provide clinical services as members of the medical staff at one of Baylor Scott & White Health's subsidiary, community or affiliated medical centers and do not provide clinical services as employees or agents of those medical centers or Baylor Scott & White Health. Photography may include models or actors and may not represent actual patients. ©2019 Baylor Scott & White Health. BSWMCP_199_2019_L/GD



HEALTH CARE DIRECTORY 2019

GOLD SPONSOR



Baylor Scott & White - Plano is certified as a Level 1 Comprehensive Stroke Center, treating the most complex stroke cases.

SILVER SPONSORS



Methodist Richardson Medical Center
Trust. Methodist. |
MethodistHealthSystem.org/Richardson



RECOVER. DFW Restorative Lounge
Helping people to recover their bodies and minds. recoverdfw.com

HEALTH CARE SNAPSHOT

COMPILED BY **OLIVIA LUECKEMEYER**

Thousands of Richardson residents are employed by the health care industry.

Local HEALTH CARE INDUSTRY



6,929 workers
in Richardson are employed
in the health care and social
assistance industry.



4,742 workers
in Richardson are
employed in health care-
related occupations.



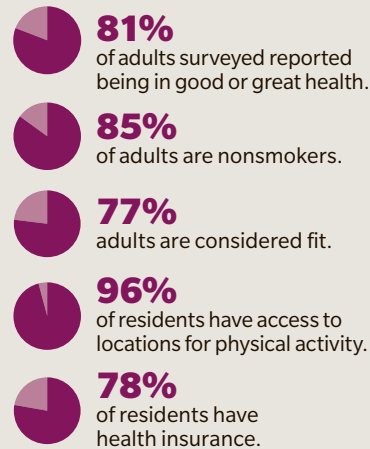
Richardson hospitals employ
1,490 total employees.



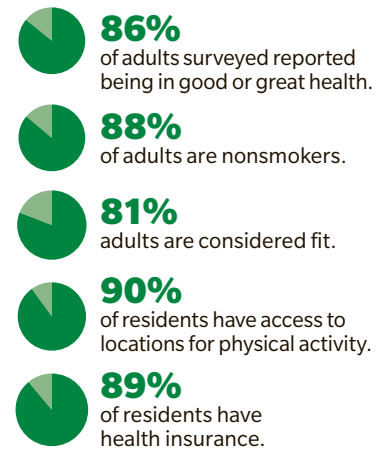
There were **2,373**
primary care physicians
in Dallas County in 2019.

SOURCES: TEXAS DEPARTMENT OF STATE HEALTH SERVICES, U.S. CENSUS BUREAU/COMMUNITY IMPACT NEWSPAPER

HOW HEALTHY IS Dallas County?



HOW HEALTHY IS Collin County?



NOW OPEN IN RICHARDSON!
GET RELIEF.
BE DURABLE.
DO MORE.

GAME READY COLD/HEAT COMPRESSION
- INFRARED SAUNA - HYDRO MASSAGE -
NUCALM RESTORATIVE SLEEP - LOCALIZED
CRYOTHERAPY - MYOFASCIAL TOOLS -
SOOTHING RECOVERY LOUNGE

ONE FREE
SERVICE WHEN YOU COME IN FOR A TOUR

MUST MENTION COMMUNITY IMPACT NEWSPAPER. LIMITED TIME OFFER.

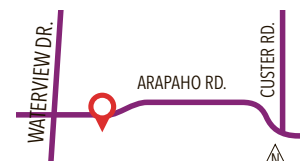


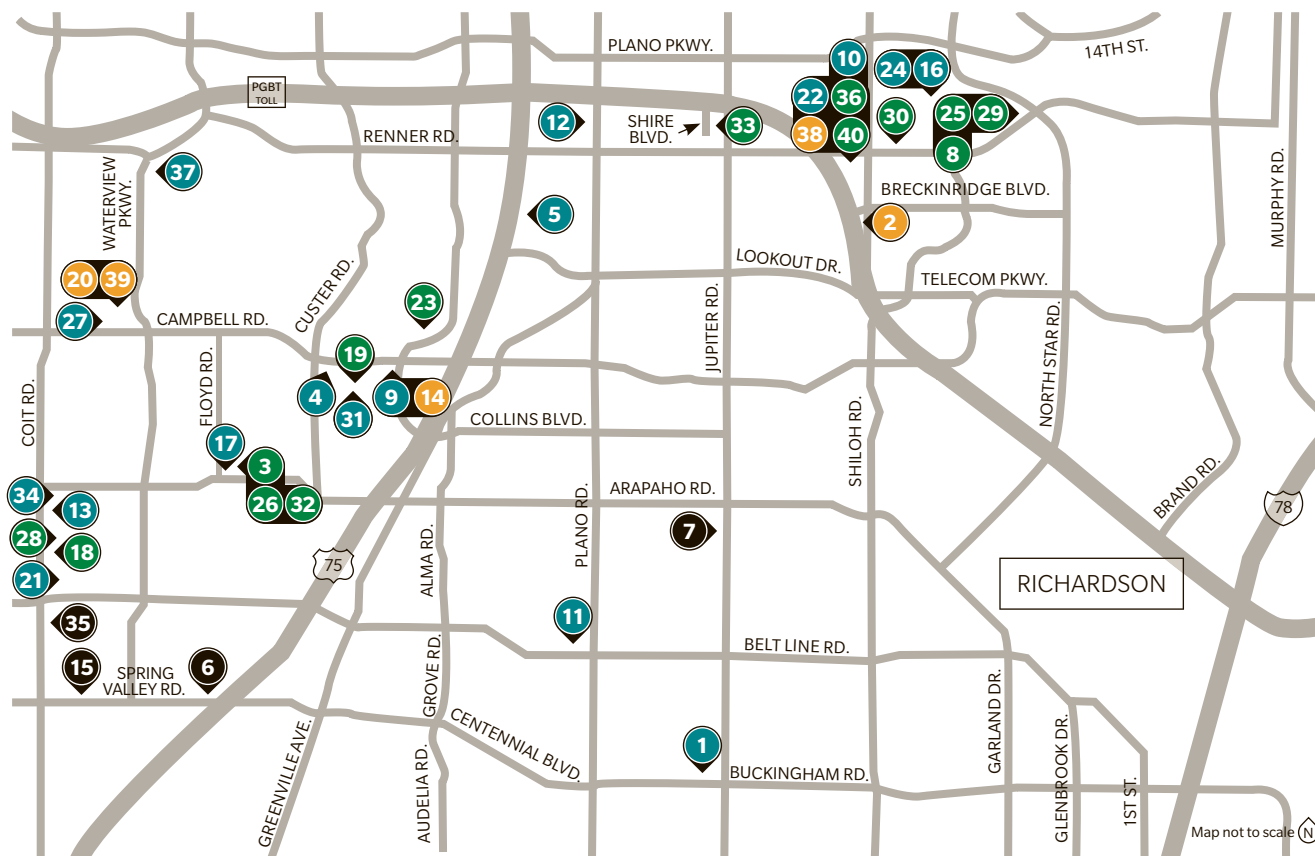
FOR ATHLETES & WORK-OUT ENTHUSIASTS:
RECOVER QUICKER AND ENHANCE OVERALL PERFORMANCE AND FUNCTIONING.

FOR EVERYONE: RECOVER FROM THE NAGGING ACHES AND PAINS OF EVERYDAY LIFE, LIKE INFLAMMATION, IRRITATED NERVE ENDINGS, EXHAUSTION, MUSCLE STRAINS AND SORENESS, STRESS, AND MORE.



819 W ARAPAHO RD., SUITE 19 | RICHARDSON, TEXAS | 469-436-4325 | RECOVERDFW.COM





MAP KEY ● Family practice ● OB-GYN ● Pediatrics ● Multipurpose

CONTINUED FROM 1

1 Addis Family Clinic

2135 Buckingham Road, Richardson
972-925-0893

2 Advanced OBGYN Associates

3201 E. President George Bush Hwy.,
Ste. 107
972-276-9902
www.advancedobgynassociates.com

3 Allison Henderson Pediatrics

1112 N. Floyd Road, Ste. 8
214-484-8802
www.allisonhendersonmd.com

4 Arapaho Village Medical Association

403 W. Campbell Road, Ste. 103
972-235-8311

5 Baylor Scott & White Family Health Center-Richardson

2520 N. Central Expressway, Ste. 100
972-234-3311
www.bswhealth.com/locations/family-health-center-richardson

6 Community Medical Clinic

708 W. Spring Valley Road
214-570-9400

7 Cubic Care Family Medicine

905 N. Jupiter Road, Ste. 160
972-479-9960
www.cubiccare.com

8 Richard H. Daniel MD

3601 North Star Road
972-231-9421

9 Family Clinic

399 W. Campbell Road, Ste. 412
972-669-1454
www.richardsonfamilyclinic.com

10 Family Healthcare Associates

2821 E. President George Bush Hwy.,
Ste. 100
214-575-3422

11 Family Health Partners

1235 E. Belt Line Road, Ste. 100
972-671-3300

12 Family Medicine of Richardson

3661 N. Plano Road, Ste. 3000
972-238-7051

13 Lawrie Friedman MD

670 N. Coit Road, Ste. 2355
972-644-3422
www.lawriefriedmanmd.com

14 Anne Wang-Gomez MD PA

399 W. Campbell Road, Ste. 302
972-498-4470
www.doctorannegomez.com

15 Hola Doctora

1260 Spring Valley Road
214-570-8200

16 iMedicine & Primary Care

3200 Talon Drive, Ste. 300
972-649-5937
www.imedmd.com

17 Charles Kasbarian MD

670 W. Arapaho Road, Ste. 6
972-235-6311
www.ckasbarian.com

18 Jayshree Novak MD

500 N. Coit Road, Ste. 2075
972-231-4605

19 Kalavalli Ezekiel MD

375 Municipal Drive, Ste. 102
972-231-5364

20 LOR Women's Health Care

1080 W. Campbell Road, Ste. 100
972-479-1223
www.lorwhc.com

21 Mercy Bridge Medical

400 N. Coit Road, Ste. 1920
972-437-4438

22 Methodist Breckinridge Family Medical Group

2821 E. President George Bush Hwy.,
Ste. 404
214-576-2227
www.methodisthealthsystem.org

23 Myint and Win MDs

2097 N. Collins Blvd., Ste. 198
972-680-9983

24 North Richardson Family Clinic

3200 Talon Drive, Ste. 100
214-431-4539
www.northrichardsonfamilyclinic.com

25 Poole Pediatrics

3601 North Star Road
214-343-0818
www.poolepediatrics.com

\$100 OFF
General Dentistry

Mention Community Impact to redeem offer! Offer valid for services only, cannot be applied to office visit or co-pay.

N. Floyd Rd. ★ W. Arapaho Rd. Custer Rd.

1112 N Floyd Rd #5
Richardson • (972) 231-4876
www.meredithdavisdds.com



COMPILED BY OLIVIA LUECKEMEYER

26 John R. Porter MD PA

1112 N. Floyd Road, Ste. 10
972-235-6911
www.johnportermd.com

27 Promenade Family Medicine

1120 W. Campbell Road, Ste. 111
972-234-6868

28 Rainbow Pediatrics of Dallas

620 N. Coit Road, Ste. 2175
972-231-3134

29 Reese A. Mathieu Pediatricians

3601 North Star Road
972-235-0385
www.reesemathieumd.com

30 Renner Pediatrics

3409 Spectrum Blvd., Ste. 300
972-231-6564
www.rennerpediatrics.com

31 Richardson Family Medical Group

399 W. Campbell Road, Ste. 101
972-238-1848

32 Richardson Pediatric Associates

1112 N. Floyd Road, Ste. 7
972-952-0280
www.richardsonpediatricassociates.com

33 Shine Pediatrics and Wellness Center

3600 Shire Blvd., Ste. 110
469-333-1543
www.shinepediatrics.com

34 Texas Health Family Care

970 N. Coit Road, Ste. 3040
972-238-8092
www.texashealth.org

35 Texas Medical Home

101 S. Coit Road, Ste. 317
972-525-8917
www.texasmedicalhome.com

36 Touchstone Internal Medicine and Pediatrics

2821 E. President George Bush Hwy., Ste. 508
214-239-1053
www.touchstonemedped.com

37 UT Southwestern Medical Center at Richardson/Plano

3030 Waterview Parkway
972-669-7070
www.utswmed.org/locations/richardson-plano

38 Women's Health Associates of Richardson

2821 E. President George Bush Hwy., Ste. 400
972-231-9144
www.wharichardson.com

39 Yasmin Khan MD

1080 W. Campbell Road, Ste. 200
972-498-4510
www.yasminkhanmd.com

40 Alan Yedwab MD

2821 E. President George Bush Hwy., Ste. 308
214-320-1661

The offices listed in this directory take appointments and practice medicine in the fields of family practice, internal medicine, obstetrics and gynecology, and pediatrics.

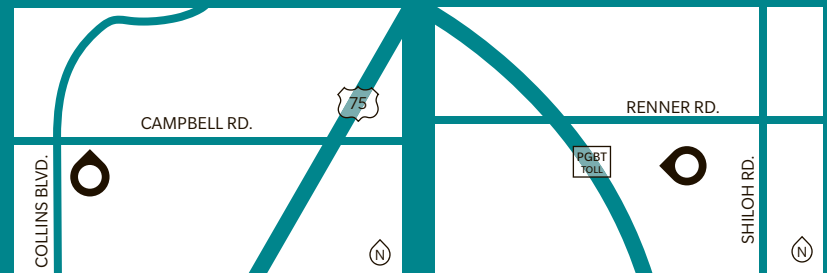
This list is not comprehensive.

LOCAL HOSPITALS**Methodist Campus for Continuing Care**

401 W. Campbell Road
469-204-1000
www.methodisthealthsystem.org/texas-locations/methodist-campus-for-continuing-care

Methodist Richardson Medical Center

2831 E. President George Bush Hwy.
469-204-8000
www.methodisthealthsystem.org/methodist-richardson-medical-center

**URGENT CARES****Fastercare**

4011 E. Renner Road, Ste. 110
972-234-3299
www.faster-care.com

MedSpring Urgent Care Richardson

377 W. Campbell Rd #100
463-232-2945
www.medspring.com/texas/richardson-campbell-ave-urgent-care

PrimaCare Urgent Care-Richardson

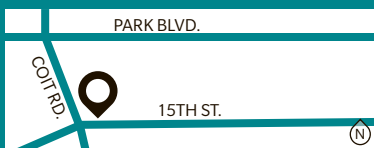
1810 N. Plano Road
972-664-9888
www.pmc.nextcare.com/locations/richardson

Texas Medical Home

101 S. Coit Road, Ste. 317
972-525-8917
www.texasmedicalhome.com

**REGIONAL LEVEL I TRAUMA HOSPITALS****Medical City Plano**

3901 W. 15th Street, Plano
972-596-6800
www.medicalcityplano.com

**Parkland Health and Hospital System**

5200 Harry Hines Blvd., Dallas
214-590-8000
www.parklandhospital.com

**BACK TO SCHOOL BASH YOU'RE INVITED!**

Saturday, July 27, 2019, 10 am - 3 pm

- ☒ Eye Exam ☒ Eyeglasses
- ☒ Now You're Ready For School

Enjoy our spin wheel savings for eyeglasses & have fun in the selfie booth.

Raffle: Backpacks, Fujifilm Instax Mini, iHome portable speaker.



Superflex LuckyBrand

3501 Custer Pkwy #105
469-904-0377

Mention this Community Impact ad & receive

\$50 OFF

Blue Light Filter lenses for Digital Devices

CANNABIDIOL:

WHAT IT DOES, WHERE TO FIND IT AND
THE LEGISLATIVE BATTLE TO LEGALIZE IT

COMPILED BY KELLY SCHAFER | DESIGNED BY CAITLIN WHITTINGTON

1

WHAT IS CANNABIDIOL?

Cannabidiol, also known as CBD, is a hemp-derived extract that can be used for therapeutic and medicinal purposes.



Studies have shown it can have beneficial effects in various pathological conditions, including:

- inflammation
- addiction
- cancer
- epilepsy

3

HEMP VS MARIJUANA

Many people confuse hemp and hemp-derived products with marijuana.

SIMILARITIES:



Hemp and marijuana plants are varieties of Cannabis sativa—a controlled substance in the U.S.



Amounts of **CBD** and **delta-9-tetrahydrocannabinol, also known as THC,** are found in both plants.

DIFFERENCES:

HEMP

Contains **less than 1%** of the psychoactive element THC

Grown as a fiber, seed or dual-purpose crop

MARIJUANA

Typically contains **3%-15%** of the psychoactive element THC

Grown for leaves and flower buds

Hemp fibers can be used to make a variety of products, including:



fabrics



body care



food



plastics

2

IS CBD LEGAL?

Gov. Greg Abbott signed House Bill 1325 into law June 10. It legalizes the growing of industrial hemp containing less than 0.3% of tetrahydrocannabinol, or THC. Medical cannabis in the form of CBD oil, which can have no more than 0.5% THC, must be obtained from a licensed dispensary with a prescription for intractable epilepsy.

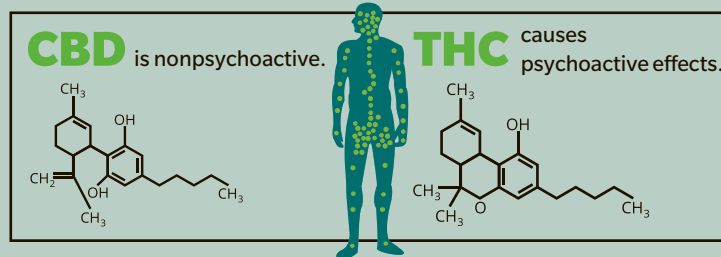


House Bill 3703, which passed in the 2019 Legislature, seeks to expand the medical cannabis law to include other ailments and neurological disorders. At press time the bill had not been signed by Abbott.

4

CBD VS THC

Both compounds interact with cannabinoid receptors in the body's **endocannabinoid system**, which are neurotransmitters.



5

WHAT TO KNOW BEFORE USING CBD

Hemp-derived CBD products include sublingual drops, lotions and creams, patches, pills, vaping liquids and edibles.



Talk to a doctor as CBD can react with other medications.



Check the label to ensure familiarity with ingredients and their side effects.



Ask for a certificate of analysis to see if it was tested for CBD and THC levels and contaminants.



Ask the staff where the hemp was grown. If they don't know, it is likely they are not knowledgeable about the product or its ingredients.



Go online to the Food and Drug Administration's website for warning letters and test results for CBD-related products.



AVAILABILITY OF CBD

CBD products have become accessible in shops across Richardson.

KEY:



Oils or tinctures



Capsules



Cream or balm



Gummies or candy

CBD AMERICAN SHAMAN

1867 N. Plano Road, Richardson
469-730-2133

www.cbdrichardson.com

Available CBD products:



CBD PLUS USA

1404 W. President George Bush Hwy., Ste. 118, Richardson
833-422-3758 • www.cbplususa.com

Available CBD products:



PHARM HAUS

525 W. Arapaho Road, Ste. 3, Richardson • 214-434-1180
www.thepharmhaus.com

Available CBD products:



WE HEART CBD

1332 S. Plano Road, Richardson
469-399-0151
www.weheartcbd.com

Available CBD products:



COMING SOON

DFW CBD & WELLNESS

800 E. Arapaho Road, Richardson
www.dfwcdbd.com

Available CBD products:



DISCLAIMER: THIS LIST MAY NOT BE COMPREHENSIVE.

SOURCES: U.S. DEPARTMENT OF AGRICULTURE, TEXAS DEPARTMENT OF PUBLIC SAFETY, CBD ORIGIN, CONSUMER REPORT, CONGRESS, ECONOMIC RESEARCH SERVICES, LEGISCAN, U.S. NATIONAL LIBRARY OF MEDICINE, NATIONAL INSTITUTES OF HEALTH, NATIONAL CONFERENCE OF STATE LEGISLATURES/COMMUNITY IMPACT NEWSPAPER

EARN UP TO 4X MORE ON YOUR MONEY MARKET.

Come in to sign up.

1755 N. Collins Blvd. behind Methodist | 866.528.8007 | www.pioneer.bank

MEMBER FDIC

PIONEER BANK
Explore more

THE RISE OF TELEMEDICINE

COMPILED BY **CHRISTINE HALL** DESIGNED BY **CHASE BROOKS**

HOW IT STARTED IN TEXAS:

The 85th Texas Legislature passed Senate Bill 1107 in 2017, which describes legal and regulatory requirements on how a physician can provide telemedicine medical services.

WHY IS TELEMEDICINE USED?

- Increases health care value and affordability
- Saves time and money
- Reduces emergency room visits and physician burnout
- Increases face time with patients

76% of U.S. hospitals connect with patients and consulting practitioners using video and other technology.

+52% Annual telemedicine visits have increased at an average annual compound growth rate of 52% from 2005-14.

TELEMEDICINE TECHNOLOGY

Artificial intelligence: human intelligence learned by a machine, such as a computer

Virtual reality: simulated reality experience generated by a computer

Augmented reality: sensory experiences of the real world blended with digital information technology

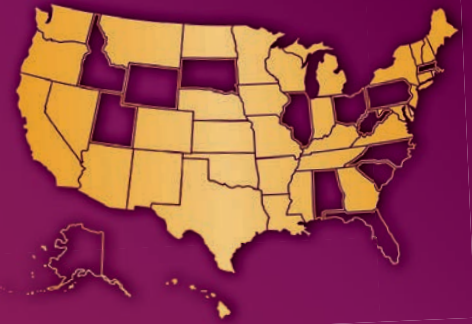
HOW TEXAS DOCTORS CAN USE TELEMEDICINE:

Store-and-forward technology: clinically relevant photographs or video images, including diagnostic images or a patient's relevant medical records.

Another form of audiovisual technology that satisfies the accepted standard of care

Real-time audiovisual interaction between physicians and patient

36 states and the District of Columbia have enacted "parity" laws that require health insurers to cover services provided via telehealth the same way they would reimburse for services provided in person.



WHO USES TELEMEDICINE IN DALLAS-FORT WORTH?

- Baylor Scott & White Health
- Parkland Health and Hospital System
- Children's Health
- University of Texas Systems
- Medical City Healthcare
- U.S. Department of Veterans Affairs
- Methodist Medical Group
- UT Southwestern Medical Center

2020

In 2020, telehealth will be covered by Medicare under the federal Bipartisan Budget Act.

25% of consumers in 2018 said they received virtual health care services, up from 21%.

2018	25%
2017	21%

TELEMEDICINE SAVES MONEY:



If yearly visits shifted to virtual visits, about \$7 billion worth of primary care physicians' time could be saved.



Virtual visits are estimated to save an average of \$126 per visit.

TELEMEDICINE MARKET VALUE BY 2024:

\$60.4B

Growth drivers:

- rising health care costs
- technological innovations
- increase in remote patient monitoring
- growing burden of chronic diseases

SOURCES: TEXAS MEDICAL ASSOCIATION, TEXAS MEDICAL BOARD, HEALTHIT.GOV, MORDOR INTELLIGENCE, AMERICAN HOSPITAL ASSOCIATION, AMERICAN TELEMEDICINE ASSOCIATION, DELOITTE, CENTERS FOR MEDICARE & MEDICAID/COMMUNITY IMPACT NEWSPAPER

WE TURN YOUR FAVORITE CAMPING SPOT INTO SWEET TEA.
HOMEGROWN TOMATOES AND BACKYARD CANNONBALL.

CONSERVE YOUR WATER SOURCE.
LOVE LAVON LAKE.

FOR CONSERVATION TIPS, VISIT NTMWD.COM

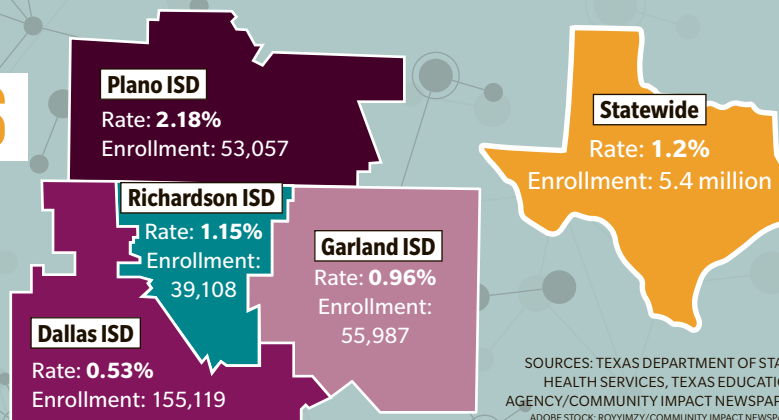


NORTH
TEXAS
MUNICIPAL
WATER
DISTRICT

REGIONAL CONSCIENTIOUS EXEMPTION RATES

Parents in Texas have the right to opt out of one or more vaccinations for their children based on reasons of conscience. Richardson ISD has the second-highest conscientious exemption rate among its neighboring districts.

DESIGNED BY **CHELSEA PETERS**
COMPILED BY **OLIVIA LUECKEMEYER**



CONTINUED FROM 1

state average of 1.20%, according to the department of state health services.

Diseases once thought to be eliminated are making a comeback in large part because people are choosing not to vaccinate. Nationwide, the 940 cases of measles reported this year is the largest number since 2000, when the Centers for Disease Control and Prevention declared the disease eliminated in the United States.

So far this year, DSHS has confirmed 15 measles cases in Texas—the highest number in six years. No additional cases have been reported to the

department since June 11. One case has been reported in Dallas County, while two cases have surfaced in Collin County.

Health officials and scientists are concerned that an increased number of unvaccinated people could eventually undermine what researchers call herd immunity. Herd immunity is the idea that a population's high vaccination rate helps slow the spread of vaccine-preventable diseases, protecting the unvaccinated and people for whom vaccines are not fully effective.

Zachary Simoni, professor of medical sociology at the University of Texas at

Dallas, said part of problem is people fail to see how their individual decisions cause larger, collective problems.

"Immunizations are supposed to protect you, but really it's about protecting the entire community," he said. "I don't think people have that communal thought when it comes to immunizations."

REQUIREMENTS AND EXEMPTIONS

In accordance with Texas law, public and private schools require students to receive six mandatory vaccines before they can enroll in kindergarten.

These vaccinations are intended to

PRIVATE SCHOOL TRENDS

Five private schools in Richardson reported conscientious exemption rates to the state in school year 2018-19.

Dallas International School	4.13%
Iant Quranic Academy	4.48%
North Dallas Adventist Academy	3.33%
St. Joseph Catholic School of Richardson*	0%
St. Paul the Apostle School*	0%

*THE CATHOLIC DIOCESE OF TEXAS DOES NOT ALLOW CONSCIENTIOUS EXEMPTIONS.

prevent chickenpox, diphtheria, tetanus, acellular pertussis, polio, measles, mumps, rubella, and hepatitis A and B.

A seventh vaccine is required for students entering seventh grade. This vaccine protects against meningitis.

But there are options for parents who want to opt out of the required vaccinations for their children. A medical exemption, which requires a letter from a doctor, is granted when a child is unable to receive a certain vaccine due to a health condition.

DORIANBAHR®

909 BUSINESS PARKWAY, RICHARDSON, TX 75081
214.698.9936 | DORIANBAHR.COM

DESIGNING DREAMS FOR 25 YEARS!
DESIGN | BUILD | REMODEL

INNOVATION & EXCELLENCE AWARD 2019
NARI CoTY 2019 AWARDS
Excellence under \$500,000
GREATER DALLAS

FREE JUST GOT BETTER.

Free checking, savings, mobile alerts and 50,000 ATMs.

Come in to sign up.

1755 N. Collins Blvd. behind Methodist | 866.285.3095 | www.pioneer.bank/free

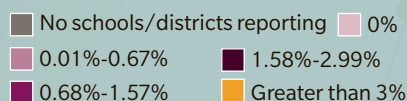
This is where other banks may hide the bad news. Not us. Free personal checking doesn't have a minimum balance requirement. Our customers also get free use of over 50,000 free Allpoint ATMs at places like Walgreens, CVS, and Target across Texas and the US.

MEMBER FDIC

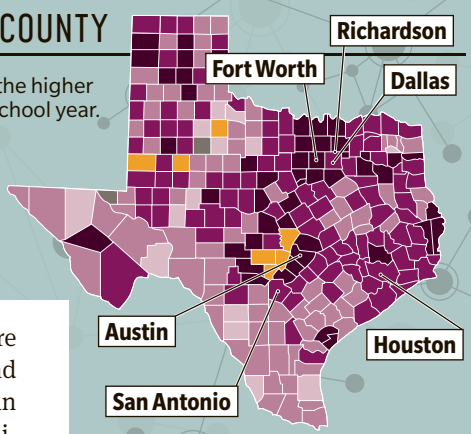
PIONEER BANK 
Explore more

EXEMPTION RATE PER TEXAS COUNTY

Collin County school districts have one of the higher exemption rates in Texas for the 2018-19 school year.



SOURCE: TEXAS DEPARTMENT OF STATE HEALTH SERVICES/
COMMUNITY IMPACT NEWSPAPER



Conscientious exemptions require a notarized letter from a guardian and remain valid for two years. Parents can opt out of one or more vaccines for religious, philosophical or moral reasons.

During the most recent school year, 434 RISD students had conscientious exemptions. The remaining 11 were exempt for medical reasons.

Lead nurse at RISD Becky Geise said that while health care providers on campus advocate for immunizations, the district does not take a specific stance on whether parents should vaccinate.

"Parents always have the right [not to vaccinate] and are the best people to make the decision for their kids," she said.

Earlier this year, a parent reported a possible case of mumps, but it turned out to be a false alarm, Geise said.

The health services department will notify families if a vaccine-preventable disease is reported to the district even if the case is not confirmed, Geise said. An extra effort is made to alert parents of children with exemptions, she said.

PRIVATE SCHOOL TRENDS

Five Richardson private schools reported exemption rates to the state in school year 2018-19. The Catholic Diocese of Texas does not allow conscientious exemptions, which explains the rates of 0% at St. Joseph and St. Paul the Apostle catholic schools.

The remaining three schools—Dallas International School, Iant Quranic Academy and North Dallas Adventist Academy—had exemption rates ranging between 3.33%-4.48%.

A new Dallas International School policy should dramatically decrease its exemption rate, according to Director of Communications and Community Development Lorraine Gachelin. In response to parents' concern over measles, conscientious exemptions will no longer be permitted beginning in school year 2020-21.

CHOOSING NOT TO VACCINATE

There are several reasons why parents may choose not to vaccinate their children, Simoni said.

For one, mistrust in health officials has grown in recent decades, he said. This is linked to the consumer-driven approach to medicine found in the U.S.—seeing patients is how doctors earn money, so instead of building relationships, many doctors seek to treat as many patients as possible.

"Patients may see an ulterior motive of making money instead of caring about a person's well-being," he said.

The prolific spread of misinformation about the efficacy of vaccines is also to blame, Simoni said. Social media gives people a platform to disseminate information that is both inaccurate and potentially dangerous, he said.

This could explain why exemptions to vaccines in the U.S. are seen most commonly among wealthy and educated families, Simoni said.

"You are more connected; you interact with other people thinking the same way as you; and maybe that sense of mistrust is higher in those groups because they feel they have enough knowledge and education to not need to be told what to do," he said.

FIGHTING FOR TRANSPARENCY

Under current law, Texas collects exemption data at the school district level.

A proposal to provide greater transparency failed in the most recent legislative session. Senate Bill 329 would have given parents easy access to information about the number and type of exemptions at a specific campus.

"Exemptions are one of the areas of concern to a parent, and it's information that already exists, so let's give them all the information they can have," said state Sen. Kel Seliger, R-Amarillo, who authored the bill.

Sherelle Black and Lindsey Juarez contributed to this story.

For more information, visit
communityimpact.com.

QUICK AND CONVENIENT EMERGENCY CARE.



When it's urgent, the ER at Methodist Richardson Medical Center – Campus for Continuing Care is convenient. From strains and sprains to cuts and breaks, the emergency room team can handle most any situation. Conveniently located near Campbell and 75, the Campus for Continuing Care offers short wait times and, like our main campus, has a medical staff of board-certified emergency physicians 24 hours a day, seven days a week. **Trust. Methodist.**

MethodistHealthSystem.org/RichardsonEmergency

401 W. Campbell Road
Richardson, TX 75080
972-498-4777

Texas law prohibits hospitals from practicing medicine. The physicians on the Methodist Health System medical staff are independent practitioners who are not employees or agents of Methodist Health System or Methodist Richardson Medical Center. Methodist Health System complies with applicable federal civil rights laws and does not discriminate on the basis of race, color, national origin, age, disability, or sex.

A SECOND CHANCE

Kip, a cavalier King Charles Spaniel, and his owner, Cathy Teff, practice ring jumps during a manners class. Classes at the training center are helping the two to form a bond after Kip's owner died three months ago, Teff said.

What a Great Dog Training Center

Business teaches humans how to positively interact with pets

BY OLIVIA LUECKEMEYER

The first client to walk through the door at What a Great Dog Training Center in Richardson was Barbara, a woman at her wit's end.

Barbara had turned to What a Great Dog as a last resort in training her mutt, Phoebe, center co-owner Sharon Lacaze said. After a year and a half of manners and agility training, Phoebe—a once unruly shelter dog—now ranks in competitions.

“[Barbara] would have never thought in a million years that [Phoebe] would have gotten to this point,” Lacaze said.

Barbara and Phoebe's journey is one of many success stories for What a Great Dog. Maureen Patin launched the business in 2007 out of her Prosper barn. Today the business operates out of a location in Frisco as well as a 16,000-square-foot branch in Richardson.

Lacaze was a former client and dog trainer when she joined the ownership team in 2016. A lifelong

entrepreneur, Lacaze had owned a Which Which franchise and Cupcakes Cubed in Frisco.

The business motto—Every dog can be a great dog!—is at the heart of its programs, which teach manners, agility, nose work, rallying and obedience. Each hourlong class is led by a trainer who has undergone a yearlong internal education and shadowing program. The Richardson branch hosts 80 group classes each week and serves about 500 active clients. About 45% come in for basic training, while the remainder are training for or competing in dog sports.

The word “dog” is in the center's name, but an equal if not greater emphasis is placed on training humans to positively reinforce those behaviors at home, Lacaze said. That's why the center does not offer drop-off training services, she said.

“If you've been taught how to work with and train your dog, your chances of success and continuing [the training] are much higher,” she said.



Co-owner Sharon Lacaze poses with her Belgian malinois Ripley, who she brings to work every day.

TIPS FOR TRAINING

Here are some at-home training methods to curtail unwanted behavior.

1. DESTRUCTIVE DOGS

Restrict access to items dogs should not have. Offer chew toys. Scolding is not effective.

2. PUPPY BITING

Make sure the puppy is getting enough physical and mental exercise. Try offering food or a chew toy. Allow the puppy to nap.

3. CRATE TRAINING

Frame the crate as a reward by associating it with a treat. Do not crate dogs with severe separation anxiety; instead seek professional help.



SOURCES: WHAT A GREAT DOG TRAINING CENTER, WHOLE DOG JOURNAL/COMMUNITY IMPACT NEWSPAPER

What a Great Dog Training Center

655 N. Glenville Drive, Ste. 100, Richardson

972-677-7094

www.whatagreatdog.com

Hours: Mon.-Thu. 10 a.m.-8 p.m.,

Fri.-Sun. 10 a.m.-4 p.m.



Come join
FLYING FISH & RODEO GOAT!

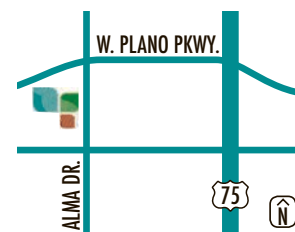
3 Restaurant opportunities now available. Contact 214-849-9016 for a tour!

Heritage Creekside

Located on the border of Plano
& Richardson at Alma & Plano Parkway

www.heritagecreekside.com

Restaurants | Urban Apartments | Townhomes
Single-family Homes | Office



Jasper's

CityLine restaurant specializes in gourmet backyard cuisine

When owner Bill Hyde purchased Jasper's 12 years ago, he said he was looking to get in on the ground floor of a culinary trend sweeping the nation.

The time commitment and cost of fine dining no longer meshed with the everyday person's busy lives, he said. What emerged instead, Hyde said, was a less costly and time-consuming version of fine dining known as high-end casual.

Jasper's, which originated in Plano but opened in Richardson's CityLine development in 2016, seeks to embody that concept, Hyde said. Guests at Jasper's enjoy an elevated level of service, quality and attention to detail but at a moderate price point and in a laid-back atmosphere.

"That's why Jasper's is a brand that has made a significant contribution not just to the community but to the food industry—it elevates the dining experience through providing a multitude of choices prepared in different ways," Hyde said.

Chefs at Jasper's are skilled in the application of various preparation methods to achieve what has been coined "gourmet backyard cuisine." Food that is reminiscent of home and family only serves to heighten the warm, welcoming environment Jasper's aims to provide, Hyde said.

"There is a trust factor you build by having products people relate to," Hyde said.

Items from the backyard fare portion of the menu include a brisket cheeseburger, pan-seared trout, hearth-smoked salmon, slow-cooked short rib, a wood-grilled pork tenderloin, sweet-chili smoked chicken and hardwood-fired filet. The menu also features salads made with fresh, local produce; wood-fired pizzas; and gourmet appetizers.

Twice a year the menu is rewritten to include seasonal items, many of which are sourced from Texas ranches and farms, Hyde said. The restaurant also offers an extensive wine list featuring over 100 varieties from France, South America, Italy and Spain.



The **Citrus Caprese Salad (\$9-\$11)** is an arugula mix featuring blood orange, grapefruit, fresh mozzarella and mint dressed in a champagne vinaigrette

PHOTOS BY OLIVIA LUECKEMEYER/COMMUNITY IMPACT NEWSPAPER



The **Wood-grilled Pork Tenderloin (\$28)** is served over a bed of jalapeno charred corn and Texas peach barbecue sauce topped with onion rings.



PAN-SEARED:
Food is cooked at a high temperature in a pan.



GRILLED: Heat from oak or hickory chips is applied to food at a high temperature, cooking and flavoring from below.



SMOKED:
Food is flavored or cooked by exposing it to smoke.



SLOW COOKED:
Food is simmered at a low temperature for many hours.

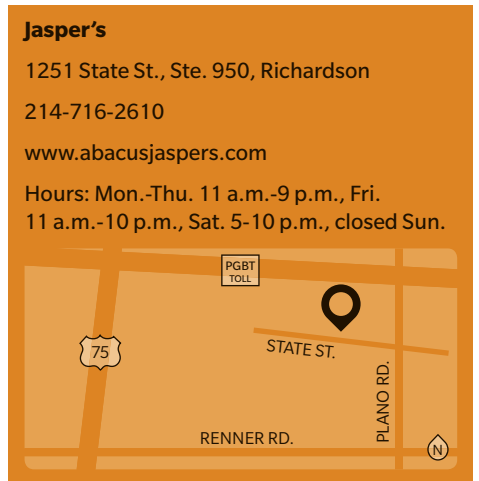


BRAISED:
Food is seared and slow-cooked for many hours in an oven with liquid.



BAKED:
Food is cooked in a heated oven with oils and liquids.

SOURCE: JASPER'S/COMMUNITY IMPACT NEWSPAPER



Jasper's

1251 State St., Ste. 950, Richardson

214-716-2610

www.abacusjaspers.com

Hours: Mon.-Thu. 11 a.m.-9 p.m., Fri. 11 a.m.-10 p.m., Sat. 5-10 p.m., closed Sun.

Roofing & Remodeling

Kitchens
Bathrooms
Room Additions
Roof Replacements
Windows
Siding

972.669.7807



bryjo.com

COWORKING IN RICHARDSON

Flexible workspace for freelancers, independent contractors, international companies and corporate businesses is on the rise in Richardson. Coworking offers a low-cost alternative to traditional office space and also comes equipped with amenities.

SOURCES: VARIOUS BUSINESSES/COMMUNITY IMPACT NEWSPAPER

CONTINUED FROM 1

But while the nature of coworking implies exclusivity to gig workers, The Common Desk founder Nick Clark said this is a misconception.

"The growth of coworking and why it has become the largest-growing sector of commercial office is because of all of the mid-size companies that are taking up these two-to-12-man offices and the enterprise offices that are taking the larger suites," he said.

The growing number of industries using coworking space is why John Jacobs with the Richardson Economic Development Partnership perceives coworking not just as a trend but a permanent fixture of the city.

"The ability of a coworking space to put people together with different skill sets that enable them to conceive of ways to combine or create synergistic partnership opportunities with each other ... it's the social and business networking that is of very high value," he said.

CAPTURING THE GIG ECONOMY

To witness the proliferation of flexible workspace, Metroplex dwellers need look no further than their own backyards.

A survey published in January by global commercial real estate services organization Colliers International found that among 19 major U.S. markets, Dallas-Fort Worth is the fastest growing in terms of coworking space. Between the fourth quarter of 2016 and mid-2018, flexible workspace in DFW grew by 250%, according to the survey.

Forbes.com estimated in 2018 that 36% of American workers—or 57 million people—were members of the gig economy. By 2025, trend forecasting

group The Herman Trend Alert predicts half of the world's population will be employed on a by-gig basis.

Tim Tieu, owner of the The Drawing Board, said the decision to open a coworking facility was symptomatic of his own desire for a flexible workspace to house his many businesses. The fact that it happened at the same time as the explosion of the gig economy was a happy accident, he said.

"In this day and age, I think there is a new breed of people who are looking for this sort of collaborative environment—a space where you aren't confined to the traditional four walls or a lease," he said.

Coworking members pay a daily or monthly fee that entitles them to use of a specific area within the facility, such as a community table, dedicated desk, private office or conference room.

Memberships also include access to a sweeping range of complimentary amenities, including Wi-Fi, bottomless coffee, fitness equipment and workout classes, and adult beverages, to name a few.

Amenities and design of each Common Desk vary based on location, Clark said.

He predicts members at the Richardson branch will be middle-aged, so instead of offering a keg in the kitchen and a ping-pong table, craft cocktails will be available for order every afternoon.

"The best thing I can compare it to is staying at [boutique hotel] The Jewel as opposed to the Holiday Inn," Clark said. "With every single Common Desk, we are dropping in new

special amenities that are taken a level deeper—it's a level of care and amenities that these other groups aren't able to reach."

CORPORATE USE

Along with the freelancers, startups, and international companies, coworking operators also seek out the business of corporate clients.

Tieu said The Drawing Board "highly encourages" partnerships with corporations. By offering meeting rooms, access to state-of-the-art technology and minimal disruption, Tieu said a coworking space is far superior to Starbucks or any other off-site meeting locations.

"[Corporations] have a population that works remotely, and what better place to have your remote workers

than a place like this, where they can get things done," he said.

Both The Drawing Board and The Common Desk boast several big-name companies in their member portfolios, including

Walmart, Infosys, Sprint and Samsung.

For Clark, corporate members are the secret to remaining recession-proof and therefore are an integral part of his business model. By taking up residence in Class A office buildings, The Common Desk positions itself as a building amenity, which landlords then use to attract more tenants.

"We put the landlord on a level playing field with our members by calling them both our customers," he said. "... We see coworking as the king amenity that you can drop into a project because it attracts activity, new companies and people."

Besides offering deeply discounted memberships to fellow tenants, the company also created the Ellum app. Through Ellum, members and building tenants can book conference rooms, order food and coffee, or stay up to date on what is happening inside the building.

COWORKING AS A MICRO COMMUNITY

Perhaps the most unique amenity available through coworking is the inevitable networking that happens when members of various industries are housed under the same roof.

"When you meet someone through the coworking experience, there is almost immediately a shared kinship that comes with that," Jacobs said. "You want to help them, and they want to help you."

Brian Hoang, CEO of a virtual reality platform for police training called Survivr, said business connections are one of the most valuable benefits of his membership at The Drawing Board.

"You can look at each [coworking space] as a micro-community with its own culture," he said. "... At a coworking space, you build relationships that help you out with connections or business advice."

Coworking spaces are intended to inspire creativity, collaboration and innovation, Tieu said. That is why it is no coincidence that The Drawing Board boasts an expansive open floor plan, modern interiors and large murals.

"We hope that the art and the way [The Drawing Board] is set up frees up their minds, so that they can let loose and do what they do best," he said.

"YOU CAN LOOK AT EACH [COWORKING SPACE] AS A MICRO-COMMUNITY WITH ITS OWN CULTURE."

—BRIAN HOANG, CEO OF SURVIVR AND MEMBER OF THE DRAWING BOARD



For more information visit
communityimpact.com.

COMMUNITY
IMPACT
NEWSPAPER
LOCAL. USEFUL. EVERYONE GETS IT.®



Relevant news stories

Have an idea for consideration?
Contact: newsroom@communityimpact.com



Strategic advertising opportunities

Reserve your space today!
Contact: advertising@communityimpact.com

2019

REAL ESTATE
EDITION

IN MAILBOXES JULY 2019

Now open

Communion Neighborhood Cooperative

514 Lockwood Drive, Richardson

7,000 square feet • lounge work stations • fireside couches • community events • podcast studio phone booths • business training events



DFW Innovation Center

1201 International Parkway, Richardson

8,000 square feet • event space • fitness studio training room • courtyard



COURTESY DFW INNOVATION CENTER

The Drawing Board

1900 Jay Ell Drive, Richardson

25,600 square feet • lockers • phone booths building access card • foosball, ping-pong and pool table • event space • kitchen and dining area



Venture X

2100 Alamo Road, Ste. T, Richardson

7,000 square feet • gourmet coffee and snacks nap room • phone booths • event space 24-hour access • podcast studio



Coming soon

A Common Desk

3400 N. Central Expressway, Richardson
31,500 square feet

B Hexa

2100 N. Greenville Ave., Richardson
25,000 square feet

SOURCE: OXFORD ENGLISH DICTIONARY/COMMUNITY IMPACT NEWSPAPER



Show Your Family Photos Some LOVE!

Are you concerned about fading or deterioration?

Have your photos scanned and save your images to a digital file for easy use and safe keeping.

BWC PRINTMAKERS is your one stop solutions for...

- Restoration and Reproduction of Photos
- Enlargements, Canvas, Mounting and Finishing
- All work done on our premises

25% OFF YOUR FIRST ORDER Now through July 31, 2019

616 South Sherman St, Richardson, TX 75081 | 972.231.0002 | bwc.net | Since 1975



JENG CHI

RESTAURANT & BAKERY

400 N. GREENVILLE AVE. #11

RICHARDSON, TX 75081

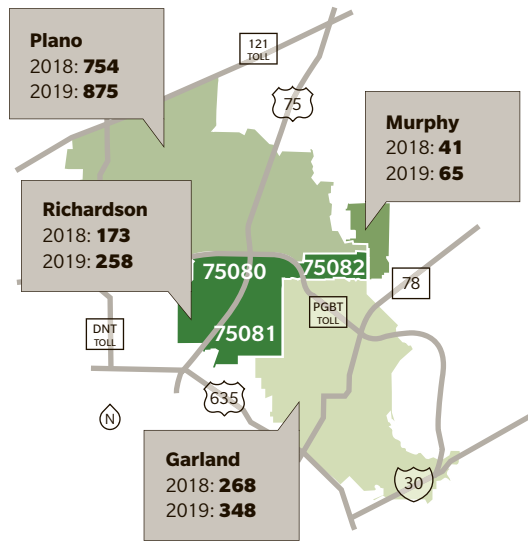
972/669-9094

WWW.JENGCHIRESTaurant.COM



HOMES ON THE MARKET

CITY COMPARISON (APRIL)



FEATURED COMMERCIAL DEVELOPMENT

3400 AT CITYLINE

Address: 3400 N. Central Expressway, Richardson

Opening: May

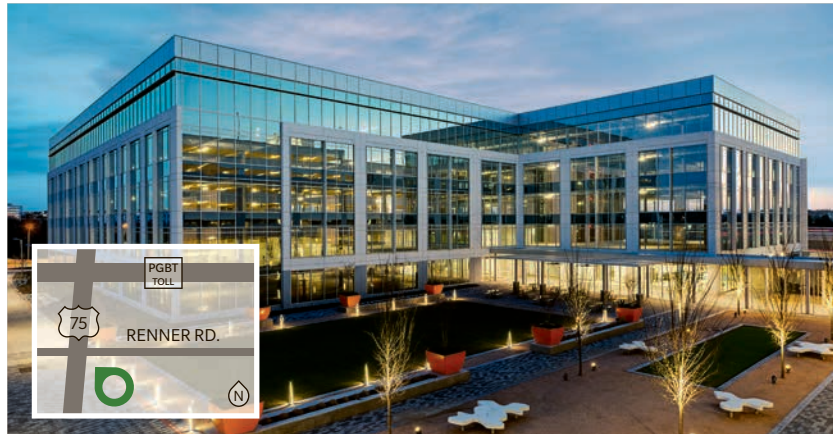
Square footage: 310,000

Typical unit square footage: 60,000

Number of tenants (at full capacity): five

Confirmed tenants: Generational Group LLC, Xandr, Common Desk

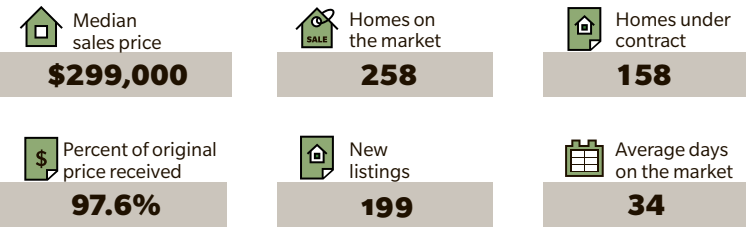
Amenities: lobby, lounge, on-site restaurant, outdoor cafe seating, fitness center with executive locker rooms, multilevel structured parking, outdoor event space, access to DART rail, located at the intersection of two major highways, access to hike/bike trails



MARKET DATA

COMPILED BY **OLIVIA LUECKEMEYER**

ON THE MARKET—APRIL 2019



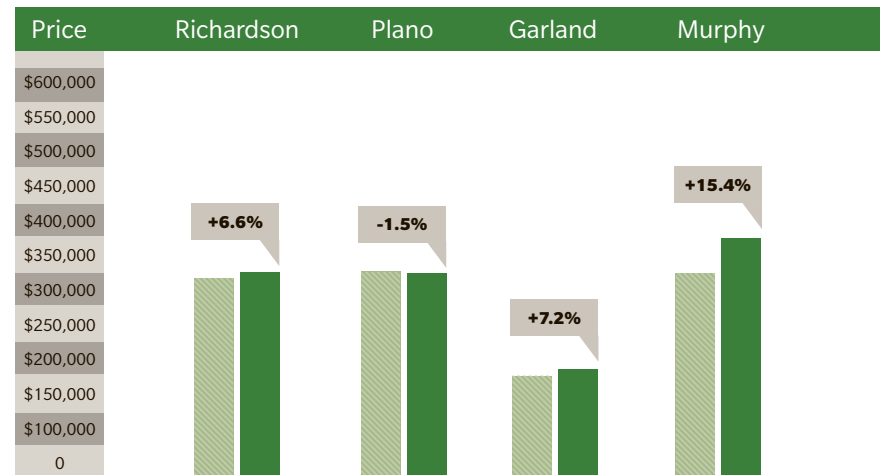
ALTHOUGH EVERY EFFORT HAS BEEN MADE TO ENSURE THE TIMELINESS AND ACCURACY OF THIS DATA, COMMUNITY IMPACT NEWSPAPER ASSUMES NO LIABILITY FOR ERRORS OR OMISSIONS.

MEDIAN SALES PRICE

MEDIAN PRICE OF HOMES BY CITY

APRIL 2018

APRIL 2019

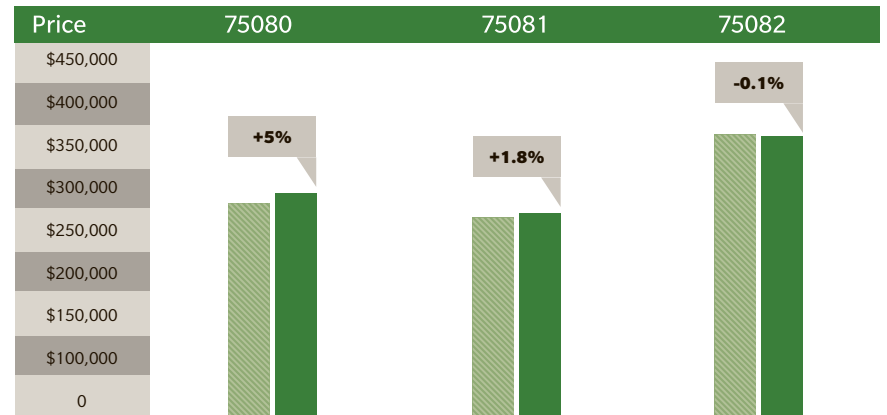


MEDIAN SALES PRICE

MEDIAN PRICE OF HOMES BY ZIP CODE

APRIL 2018

APRIL 2019



SOURCE: MARKET DATA PROVIDED BY JONNA HERNANDEZ OF COLLIN COUNTY ASSOCIATION OF REALTORS, COURTESY OF NORTH TEXAS REAL ESTATE INFORMATION SYSTEMS

CUSTOM SOLUTIONS FOR BUYERS & SELLERS

- Free foundation/roof inspections
- Free Pre-Listing inspection
- Free square footage appraisal
- Free Sellers Home Warranty
- Rebates available (credit repair & closing costs, etc)
- Pre-Listing repairs/updates with pay-at-close options available (conditions apply)

Call 972-546-7653

501 W. President George Bush Turnpike, Ste. 125, Richardson, TX 75080 | divercitygroup.com |  



KW CENTRAL 75
KELLER WILLIAMS REALTY

IMPACT DEALS

DEALS THIS MONTH

BEAUTY & FITNESS

Bulldog Barbershop	31
Hotworx	31

DINING

Cafe Amore	30
Char'd Southeast Asian Kitchen	28
Dog Haus Biergarten	31
Frankie's Mexican Cuisine	29
Gopal Vegetarian Restaurant	31
Holy Frijoles	28
Northside Draft House and Eatery	30
Palapas Seafood Bar	30
Philly Pretzel Factory	28
Rockfish Seafood Grill	28
Tamaleria Nuevo Leon	30
Vila Brazil	29

HOME & GARDEN

SmartLooks	29
------------------	----

MEDICAL

CBD American Shaman	27
Home Care Assistance	29

RETAIL

Dancewear City	29
----------------------	----

Learn about Holistic Treatments for: Pain, Anxiety,
Inflammation, Insomnia and more

 **CBD**
American Shaman™
SPRING VALLEY



Now Open!

BRING THIS AD IN FOR
20% OFF YOUR FIRST TIME
PURCHASE Exp: 7/31/19

908 Audelia Rd. Ste 100 Richardson, TX 75081
(214)-730-9651

Centennial Blvd.

Audelia Rd.

YOUR NEIGHBORHOOD TEX MEX DESTINATION

Buy one entree
at regular price and receive a second entree of equal or lesser value at **50% off**
Tax, tip, and alcohol not included. Exp. 7/31/19.

All Day Wednesday Special - \$6.99
Enchilada Dinner and \$3 House Margaritas
Chicken, cheese, and beef

OUR OPENING HOURS
MONDAYS-SUNDAYS 11A-10P

BRUNCH Sat-Sun 9am-2:30p
LUNCH SPECIALS Mon-Fri \$6.95
Best Happy Hour in Richardson
Happy hour every day 2pm-6pm, margaritas, sangria, & mojitos only \$3
Monday special - Mango margarita \$3

20% OFF ANY ORDER
Tax, tip and alcohol not included. Expires 7/31/19.

580 W Arapaho Rd • Suite 442 • Richardson, TX 75080
(972) 235-1724 • WE CATER FOR ALL OCCASIONS

GRAND OPENING

CHARD

SOUTHEAST ASIAN KITCHEN

FUEL YOUR creativity

FREE ENTREE
Buy one entree at regular price and receive a second entree of equal or lesser value free. Cannot be combined with any other offer. Expires 7/31/19.

CONTACT US
972-803-6455
CHARDKITCHEN.COM
1251 STATE ST. #800

HAPPY HOUR:
\$3 CRAFT BEERS 3PM-7PM EVERY DAY!
KIDS EAT FREE ON WEEKENDS! RESTRICTIONS APPLY, ASK FOR DETAILS.

1920 N. COIT RD
214-484-2846
PHILLYPRETZELFACTORY.COM

NOW OPEN

PRETZELS
PRETZEL RIVETS
PRETZEL DOGS
CHEESESTEAK RIVETS
CINNAMON RIVETS
AND MORE!

FREE PRETZEL
ONE FREE PRETZEL W/COUPON. EXPIRES 7/31/19

\$5 OFF ANY PARTY TRAY
EXPIRES 7/31/19

WILD ALASKA SALMON
has arrived!

Featuring COPPER RIVER SALMON
WHEN AVAILABLE

BUY ONE ENTRÉE GET ONE ENTRÉE HALF OFF
Maximum discount \$9. Not valid for Special Events. Tax & gratuity not included. One coupon valid per table. Dine-In Only. Not valid with any other offers. Expires July 24, 2019.

FRIED GREEN TOMATO & WILD ALASKA SALMON STACKS

7639 CAMPBELL RD #800 DALLAS, TX 75248

HunterDouglas

Smart Shades

SAVINGS EVENT

Modern Living. Smart Savings.

Hunter Douglas shades with PowerView® Motorization move automatically to schedules you set.** Save now on qualifying purchases with the associated smart hub.

SILHOUETTE® WINDOW SHADINGS

REBATES STARTING AT **\$150***

on qualifying purchases
June 29–Sept. 9, 2019

SmartLooks
Window & Wall Decor
101 S Greenville Ave Richardson, TX
972-699-1151
www.smartlooksdecor.com

HunterDouglas Gallery

*Manufacturer's mail-in rebate offer valid for qualifying purchases made 6/29/19–9/9/19 from participating dealers in the U.S. only. Each window fashion unit must include PowerView Motorization to qualify for rebate. Offer excludes HDOrigins™ and Nantucket™ Window Shadings, a collection of Silhouette® Window Shadings. Rebate will be issued in the form of a prepaid reward card and mailed within 4 weeks of rebate claim approval. Funds do not expire. Subject to applicable law, a \$2.00 monthly fee will be assessed against card balance 6 months after card issuance and each month thereafter. See complete terms distributed with reward card. Additional limitations may apply. Ask participating dealer for details and rebate form. **PowerView® App and PowerView® Hub required. ©2019 Hunter Douglas. All rights reserved. All trademarks used herein are the property of Hunter Douglas or their respective owners. 1903NPSIC2

THE BEST IN DANCE APPAREL, ACCESSORIES AND MORE!

Dancewear • Dance Shoes • Yoga Apparel
Gymnastics Apparel • Dance Bags

\$10 OFF ON \$50 PURCHASE OR MORE

ONE COUPON PER PERSON. CANNOT BE USED WITH OTHER OFFERS. EXP. 9/20/19

214-238-7797 • www.dancewearcity.com • 7517 Campbell Road, Ste. 407 • Dallas, TX 75248

When only the best home care will do, call

Home Care ASSISTANCE

We are the leader in providing in-home care.

IN-HOME ASSISTED LIVING
ONE-ON-ONE CARE
HOSPITAL TO HOME CARE

\$500 Off
1st month Live-in care.
Limited Time Offer.

\$25 Off
1st Hourly Service
Limited Time Offer.

Let Our Home Care Experts Help
Call Us: (469) 573-4213

6850 N. Shiloh RD, Garland, Texas, 75044 • homecareassistancerichardson.com

Vila Brazil Restaurant

The Only Brazilian Steakhouse in Richardson

GRAND OPENING!

\$10 OFF
any purchase of \$50 or more. Tax, tip & alcohol not included. Expires 7/31/19

Weekday lunch buffet starting at **\$11.90 (salad bar only)** or **\$16.90**
Weekend Brunch **\$13.90 (salad bar only)** or **\$19.90**
Dinner **\$23.90**

518 W. Arapaho Rd. #133 | 469-206-0036 | www.vilabrazil.net

FRESH MARGARITAS MIXED DAILY

FRANKIES

MEXICAN CUISINE

FAJITA SPECIAL
Fajitas for 2 for only \$20.99, Beef or Chicken
(up to \$9 value) Valid at Canyon Creek location only Expires 7/31/19

SUNDAY FUNDAY! ALL DAY HAPPY HOUR!
Happy Hour every day, from 11 am to 6pm
and all day Sundays!

CANYON CREEK 2701 Custer Pkwy Richardson, TX 972-231-8667	SACHSE 7218 Highway 78 Sachse, TX 75048 972-442-7770	GARLAND 1914 N Plano Rd Garland, TX 75042 469-814-0357
---	--	--

HAPPY HOUR MON-FRI 4PM-7PM
DAILY LUNCH SPECIALS
SUNDAY BRUNCH

LIVE MUSIC, 50 BEERS ON TAP
TRIVIA NIGHT, DARTS, BILLIARDS
& MORE!

Free Appetizer WITH THE PURCHASE OF ONE ENTREE. EXPIRES 7/31/19

3000 NORTHSIDE BOULEVARD #800
 972-238-7915 | NORTHSIDEDRAFTHOUSE.COM

President George Bush Turnpike
 Synergy Park Blvd.
 Waterview Pkwy.
 Coit Rd.

Palapas Seafood Bar

COME TRY THE TASTE OF SINALOA MEXICO!

\$10 LUNCH SPECIALS
NOW OPEN IN RICHARDSON!

FREE APPETIZER
 WITH THE PURCHASE OF TWO ENTREES.
 EXPIRES 7/31/19.

2100 ALAMO ROAD
 214.287.7578

ALAMO RD. 75 CAMPBELL RD.

TAMALERIA NUEVO LEON

Your Tamale Headquarters

6 FREE TAMALES
 WITH THE PURCHASE OF 12 TAMALES AT REGULAR PRICE
 ONE COUPON PER ORDER. ONE COUPON PER ORDER PER VISIT
 EXPIRES 7/31/19

LUNCH SPECIAL
 6 TAMALES PLUS ONE SOFT DRINK ONLY \$6.99
 VALID 11-2 MON - FRI ONLY.
 EXPIRES 7/31/19

TRY OUR AUTHENTIC BORRACHO TAMALE

- + CHICKEN
- + PORK
- + BEAN
- + CHICKEN & CHEESE
- + SPICY PORK
- + SPICY CHICKEN
- + ..AND MORE!

OPEN 7AM-10PM DAILY

2139 Buckingham Rd
 Richardson, TX 75081
 (in Richwood Shopping Center)
 Phone: 972-685-6556

EAST PARK DR
 BUCKINGHAM RD
 JUPITER RD

Cafe Amore

Ristorante Italiano

Pizza • Pasta • Steak • Seafood • Salads • Subs • Poultry

OPEN 7 DAYS A WEEK
 CATERING AVAILABLE
 WE ARE BYOB!

ORDER NOW USING
EAT24 OR **GRUBHUB**

FREE CANNOLI DESSERT
 with purchase of any entree at regular price. Expires 7-31-19

ARAPAHO RD.
 N. COIT RD.
 BELT LINE RD.

600 N. Coit Rd. #2050
 Richardson
 972-699-8322
 cafeamoredfw.com

AUTHENTIC WESTERN INDIAN VEGETARIAN CUISINE
SINCE 1991

WWW.NEWGOPAL.COM • 214-716-0651
125 S CENTRAL EXPY.

GOPAL

\$5 OFF
A PURCHASE OF \$20 OR MORE
EXPIRES 7/31/19

TIFFIN AND CATERING SERVICE AVAILABLE

HOTWORX
24 HOUR INFRARED FITNESS STUDIO

CALL AND CLAIM YOUR FIRST WORKOUT SESSION FREE!
(972) 895-3159

WHAT IS INFRARED?
Infrared heat is radiant energy that travels in wavelengths on the invisible light spectrum. Infrared heat absorption strengthens and activates the regenerative process in the human body, while its warming effect creates a comfortable atmosphere for hot exercise.

WHAT IS ISOMETRICS?
Isometric exercises are done in static positions, rather than being dynamic through a range of motion. These compression postures accelerate detoxification by physically removing the toxins from your organs through muscle contraction.

RESULTS & BENEFITS

- Sports Recovery
- Reduces Cellulite
- Stress Reduction
- Increased Calorie Burn
- Pain Relief
- Detoxification
- Lower Blood Pressure
- Anti-Aging & Skin Rejuvenation
- Improved Circulation
- Weight Loss

BULLDOG BARBER SHOP
SHAVE AND A HAIRCUT

An old school, traditional barber shop

- ✓ Fades
- ✓ Straight shaves
- ✓ Classic haircuts
- ✓ Modern styles
- ✓ Large waiting area

GRAND OPENING SPECIAL

Full Service ONLY \$25 (\$40 value)
Includes: haircut, hot towel shave, shampoo, black mask and a complimentary beverage of your choice. Valid Monday, Tuesday & Wednesday only. Exp: 7/31/19

Walk-ins welcomed • www.bulldog-barbershops.com
Mon-Thurs: 10am-8pm Fri-Sat: 9am-8pm • Sun: 10am-6pm
318 S. Central Expy #108 | 469-494-0086

Dog Haus

BIERGARTEN

SUNSET CINEMA
FRIDAY & SATURDAY NIGHTS
ALL SUMMER LONG

Bring friends & family to Dog Haus Biergarten for FREE movie screenings in the Richardson Restaurant Park plaza!

FREE BURGER
WITH PURCHASE OF HAUS BURGER
TEXT "SUNSET CINEMA" TO 31996 TO CLAIM

744 S CENTRAL EXPY #210
RICHARDSON, TX 75080
@DOGHAUSDogs RICHARDSON.DOGHAUS.COM

COLD BEERS BOLD BURGERS
24 kick-ass local craft beers on tap
Hormone- & antibiotic-free dogs, sausages & burgers

CREATE  CHURCH

Overflow

Living In The Blessings Of God

Sundays 9:30a and 11:00a

2251 N Greenville Ave, Richardson, Tx 75082

www.createchurch.com

COMMUNITY
IMPACT
NEWSPAPER
LOCAL. USEFUL. EVERYONE GETS IT.®

RICHARDSON EDITION