

Cities' leaders mull strategies ahead of tax proposal

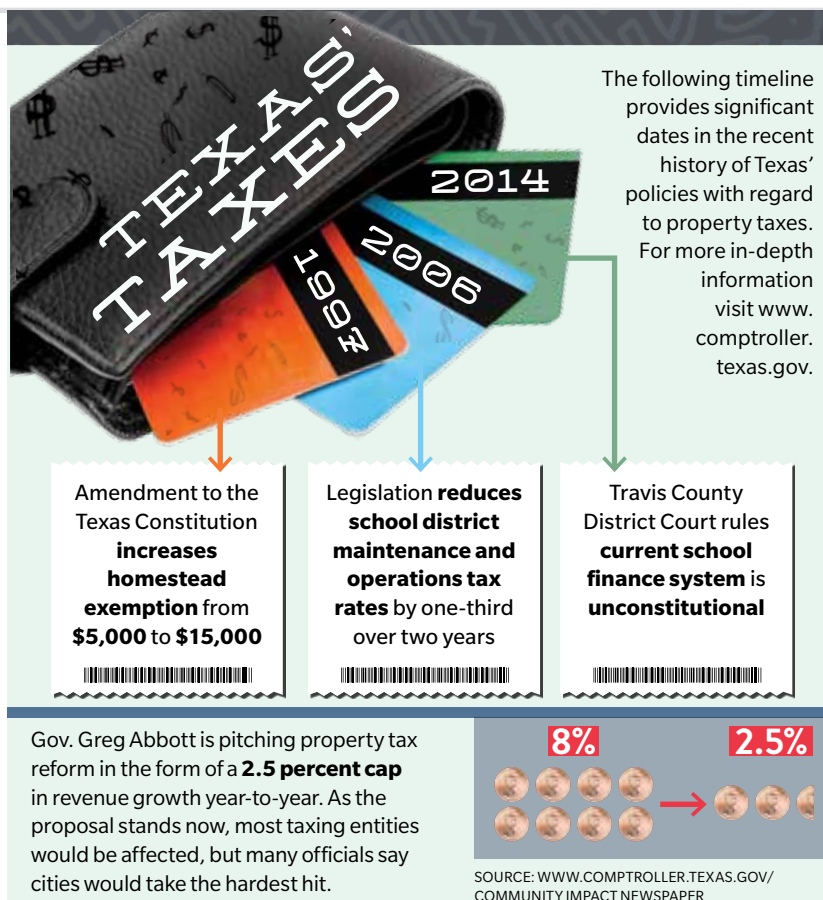
BY **BRIAN RASH**

When the city of Lakeway increased its fund balance this year from 25 percent to 30 percent of its fiscal year 2018-19 annual operating expenses, Lakeway City Manager Steve Jones said there was a specific reason behind the move.

The increase amounts to roughly \$700,000 extra in the fund balance, which equates to unrestricted cash the city keeps in reserve. Jones said in light of recent property tax caps proposed by Texas Gov. Greg Abbott, having that extra amount of money seems like a prudent strategy.

"My understanding is the [Texas] government wants to put a 2.5

CONTINUED ON 38



HOW GREEN ARE LOCAL PARKS?



Travis County working to address lack of recycling at 26 area parks

BY **TAYLOR JACKSON BUCHANAN** AND **SALLY GRACE HOLTGRIEVE**

Only six of 26 parks managed by Travis County have recycling receptacles, and many of those bins are

dated and in need of replacement, said Shaun Auckland, conservation coordinator for the county.

"Implementing a robust recycling

CONTINUED ON 40

Austin-Bergstrom will spend billions to double capacity

BY **IAIN OLDMAN**

Responding to tremendous population growth across its 21-county service region, a blossoming tourism industry and increasing demand, Austin's largest airport is investing heavily in expansion plans.

On the heels of a \$350 million, nine-gate expansion set to open this spring, Austin-Bergstrom International Airport has plans to add an additional 32 gates—which would put the airport on par with Texas' largest international airports.

"We can be as big as DFW," said Lyn Estabrook, Planning and Development manager for ABIA, referring to the airport's ability to handle travelers.

Austin City Council passed ABIA's

CONTINUED ON 42

LAKE TRAVIS WESTLAKE EDITION

VOLUME 9, ISSUE 12 | DEC. 12, 2018-JAN. 16, 2019

CI COMMUNITYIMPACT.COM





More babies agree,
the best is here.

Over 11,000 babies are born at St. David's every year. And all for one simple reason. We offer moms and their babies the very best care through every stage of their lives. It's a commitment we stay true to every single day.

StDavid's WOMEN'S

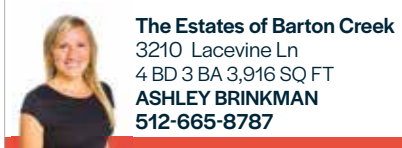
The Best Is Here.

stdavidswomens.com

RA

REALTY AUSTIN

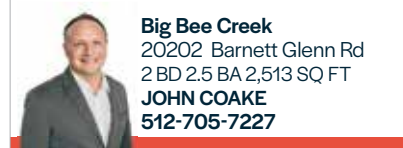
Find out what homes are selling for in your neighborhood:
realtyaustin.com/market-analysis



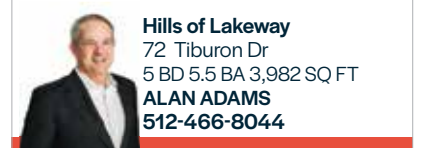
The Estates of Barton Creek
3210 Lacevine Ln
4 BD 3 BA 3,916 SQ FT
ASHLEY BRINKMAN
512-665-8787



Belvedere
18128 Flagler Dr
5 BD 5 BA 4,521 SQ FT
RICHARD FOWLER
512-925-5650



Big Bee Creek
20202 Barnett Glenn Rd
2 BD 2.5 BA 2,513 SQ FT
JOHN COAKE
512-705-7227



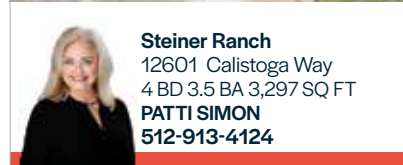
Hills of Lakeway
72 Tiburon Dr
5 BD 5.5 BA 3,982 SQ FT
ALAN ADAMS
512-466-8044



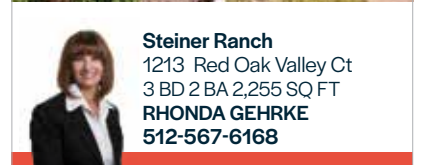
Davenport Ranch
5811 Kentucky Derby
4 BD 4 BA 3,070 SQ FT
TRACY PICONE
512-573-8851



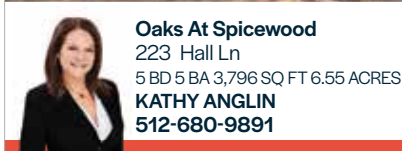
St Tropez
2102 Rue De St Germaine
3 BD 3.5 BA 2,880 SQ FT
CLAUSEN GROUP
512-853-0846



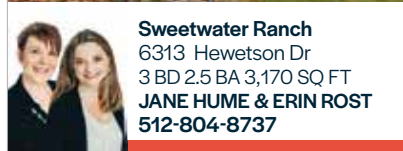
Steiner Ranch
12601 Callistoga Way
4 BD 3.5 BA 3,297 SQ FT
PATTI SIMON
512-913-4124



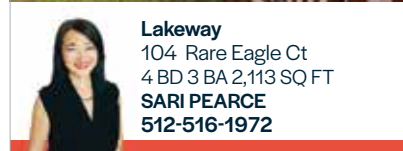
Steiner Ranch
1213 Red Oak Valley Ct
3 BD 2 BA 2,255 SQ FT
RHONDA GEHRKE
512-567-6168



Oaks At Spicewood
223 Hall Ln
5 BD 5 BA 3,796 SQ FT 6.55 ACRES
KATHY ANGLIN
512-680-9891



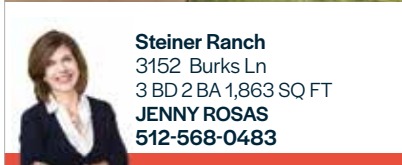
Sweetwater Ranch
6313 Hewetson Dr
3 BD 2.5 BA 3,170 SQ FT
JANE HUME & ERIN ROST
512-804-8737



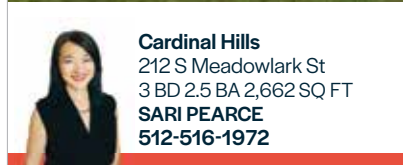
Lakeway
104 Rare Eagle Ct
4 BD 3 BA 2,113 SQ FT
SARI PEARCE
512-516-1972



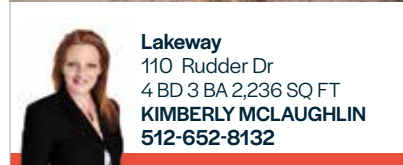
St Andrews
2 Muirfield Greens Ln
3 BD 2.5 BA 2,185 SQ FT
ALAN ADAMS
512-466-8044



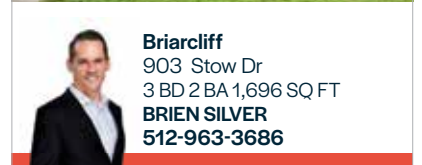
Steiner Ranch
3152 Burks Ln
3 BD 2 BA 1,863 SQ FT
JENNY ROSAS
512-568-0483



Cardinal Hills
212 S Meadowlark St
3 BD 2.5 BA 2,662 SQ FT
SARI PEARCE
512-516-1972



Lakeway
110 Rudder Dr
4 BD 3 BA 2,236 SQ FT
KIMBERLY MCLAUGHLIN
512-652-8132



Briarcliff
903 Stow Dr
3 BD 2 BA 1,696 SQ FT
BRIEN SILVER
512-963-3686

Download the Realty Austin Home Search App Powered
by Austin's #1 Home Search Website





MAKE MEMORIES, *MORE OFTEN*



55+ LOCK & LEAVE LIVING

From the \$200s to \$800+ | TuscanVillage.com



Exclusive sales and marketing by Legacy International Resort Properties. Obtain the Property Report required by federal law and read it before signing anything. No federal agency has judged the merits of value, if any, of this property.



The orthopedic services you need are just a short drive away.

From hip, knee and shoulder replacements to podiatry, physical therapy and arthritis treatments, Baylor Scott & White Health has the interdisciplinary team with a full complement of orthopedic services to get you moving again. All right where you are. Learn more about our advanced procedures and highly trained specialists today. And take a turn for the better.



BaylorScott&White

SPECIALTY CLINIC

LAKEWAY

BSWHealth.com/LakewayOrtho

512.654.2301



Dr. Nathan Drummond
Fellowship-trained
Hip and Knee Specialist



Dr. Donovan (Kip) Murphy
Fellowship-trained
Shoulder Specialist



Dr. Brett Smith
Podiatry

Photography may include models or actors and may not represent actual patients. Physicians provide clinical services as members of the medical staff at one of Baylor Scott & White Health's subsidiary, community or affiliated medical centers and do not provide clinical services as employees or agents of those medical centers or Baylor Scott & White Health. ©2018 Baylor Scott & White Health. BSWH_1577_2018

Silent Night, Holy Night

Christmas Eve Worship

The Episcopal Church of the Cross

5:00 PM Monday, December 24
Serene Hills Elementary School

3301 Serene Hills Drive in Lakeway
Child-care provided
Ecclaketravis.org



AUSTIN TELCO

FEDERAL CREDIT UNION

People Helping People Since 1941

Super Jumbo Share Certificates

2.68% 12 Months

2.78% 18 Months

Annual Percentage Yield¹

Auto Loans

New, Used And Refinance

as low as

Up to 66 Months
2.85% APR²

512-302-5555 | www.atfcu.org
24 Austin Metro Locations

¹A minimum deposit of \$225,000 is required for Super Jumbo Share Certificates. Dividends are compounded and paid quarterly. Funds must remain on deposit for the term of the certificate or penalties will apply as follows: terms of 12 months or less - 90 days dividends; terms over 12 months - 180 days dividends. Rates subject to change without notice.

²Annual Percentage Rate. Actual rate may vary depending on credit qualifications. Rates and terms are subject to change without notice. Auto loan rate advertised is our lowest rate for the purchase of a new or used vehicle, or the refinance of an existing loan from another lender. Federally insured by NCUA.

peace on earth, and peace be with you

living rough

Where the Extras Come Standard From the \$300s

3 Miles of Shoreline | Award-Winning Amenities

22 Diverse Neighborhoods | Full-Time Activities Director

DISCOVER THE ROUGH LIFE AT ROUGHHOLLOWLAKEWAY.COM

Developed by Legend Communities. Exclusive sales and marketing by Legacy International Resort Properties. Obtain the property report required by federal law and read it before signing anything. No federal agency has judged the merits of value, if any, of this property.

ROUGH HOLLOW®
LAKEWAY
A LAKEFRONT COMMUNITY

PUBLISHERS AND FOUNDERS

John and Jennifer Garrett
PUBLISHER-AUSTIN METRO

Travis Baker
GENERAL MANAGER
Phyllis Campos, pcampos@communityimpact.com

EDITORIAL

EXECUTIVE EDITOR Joe Lanane
MANAGING EDITOR Joe Warner
EDITOR Brian Rash
REPORTER Sally Grace Holtgrieve
COPY CHIEF Andy Comer
COPY EDITORS Katherine Powell, Kasey Salisbury
STAFF WRITERS Taylor Jackson Buchanan, Iain Oldman
CONTRIBUTING WRITER Albert Alvarado

ADVERTISING

SALES DIRECTOR Tess Coverman
ACCOUNT EXECUTIVE Jacqueline Harris

DESIGN

CREATIVE DIRECTOR Derek Sullivan
ART PRODUCTION MANAGER Haley Grace
GRAPHIC DESIGNER Jay Jones

BUSINESS

GROUP PUBLISHER Traci Rodriguez
CHIEF OPERATING OFFICER Claire Love

ABOUT US

John and Jennifer Garrett began *Community Impact Newspaper* in 2005 in Pflugerville, Texas. The company's mission is to build communities of informed citizens and thriving businesses through the collaboration of a passionate team.

CONTACT US

16225 Impact Way, Ste. 1
Pflugerville, TX 78660 • 512-989-6808
communityimpact.com
PRESS RELEASES ltwnews@communityimpact.com
SUBSCRIPTIONS communityimpact.com/subscriptions

ADVERTISE WITH US

For advertising inquiries, please contact us at
ltwads@communityimpact.com or 512-989-6808.



Proudly
printed by: **COMMUNITY
IMPACT**
PRINTING
COLOR. QUALITY. EVERY IMPRESSION MATTERS.™

© 2018 Community Impact Newspaper Co. All Rights Reserved. No reproduction of any portion of this issue is allowed without written permission from the publisher.

December is full of holiday opportunities

The holiday season is officially upon us, which means it is time to enjoy family and friends, events and sights in the community. With any luck, it will also mean taking some much-needed time off.

Be sure to check out our monthly To-Do List (see page 12) to find a number of holiday-themed events for the whole family. And if you're looking for ways to assist your neighbor this season, our annual Volunteer Guide (see page 36) features area nonprofits that would welcome your help.

The end of the year also marks a time of reflection as we look forward to the

new year. As you read this issue our staff is already hard at work preparing our Annual Community Guide, a special section in our January issue with the biggest stories to watch for in 2019 as well as information on schools, health care and listings for locally owned businesses and restaurants.

What are you most looking forward to in 2019? What would you like to know more about? Send us an email at ltwfeedback@communityimpact.com. We welcome your feedback.

We wish you and your family a safe and wonderful holiday season and a happy new year!



Phyllis

PHYLLIS CAMPOS
GENERAL MANAGER
pcampos@communityimpact.com

ASK THE EDITOR



B. Rash

BRIAN RASH
EDITOR
brash@communityimpact.com

Do you have a question about how local government works or something going on in town? Send it to ltwfeedback@communityimpact.com.

What does an airport expansion mean to the Lake Travis-Westlake area?

One of the aspects of *Community Impact Newspaper* that makes it so vital to its readers is that it has a sharp hyperlocal focus. With that in mind, it might seem a little out of place to include a story in our December edition on the Austin-Bergstrom International Airport's multiyear, \$350 million expansion. Though it's an impactful project in the region, it's a little far from western Travis County.

A few times a year *Community Impact Newspaper* will do a story that many of its markets can use due to its relevance across several regions, counties and cities. The ABIA story in this edition is no exception.

ABIA serves travelers throughout the Greater Austin area, including Lake Travis-Westlake. Because of this it is important for our readers to have access to the comprehensive coverage provided by Round Rock-Pflugerville-Hutto reporter Iain Oldman on ABIA's eventual expansion into one of Texas' largest international airports.

Look for further updates on ABIA's massive expansion on communityimpact.com as this major development story continues.

FEATURED STORIES

8 IMPACTS

10 TO-DO LIST

15 TRANSPORTATION UPDATES

Steiner Ranch gets a little closer to an evacuation route; what happens when you drive on a toll road without a toll tag?

23 EDUCATION NOTES
Eanes ISD proposes new facilities; New memorial scholarship honors Lake Travis ISD student

27 DEVELOPMENT
Travis County approves the nearly \$30 million Bee Creek Sports Complex; West Lake Hills sells city land for new residential development

28 CITY & COUNTY
Rollingwood mayor is sworn in; Lakeway looks into changing its code-enforcement procedures; new group will benefit Bee Cave parks and trails

31 BUSINESS FEATURE
Pink Lady Lash

32 DINING FEATURE
Elle's Cafe & Coffee

ROLEX REPAIR • ENGAGEMENT RINGS • BUY • SELL • CONSIGN • JEWELRY REPAIR • ESTATE EVALUATIONS



GIFTS FOR HIM

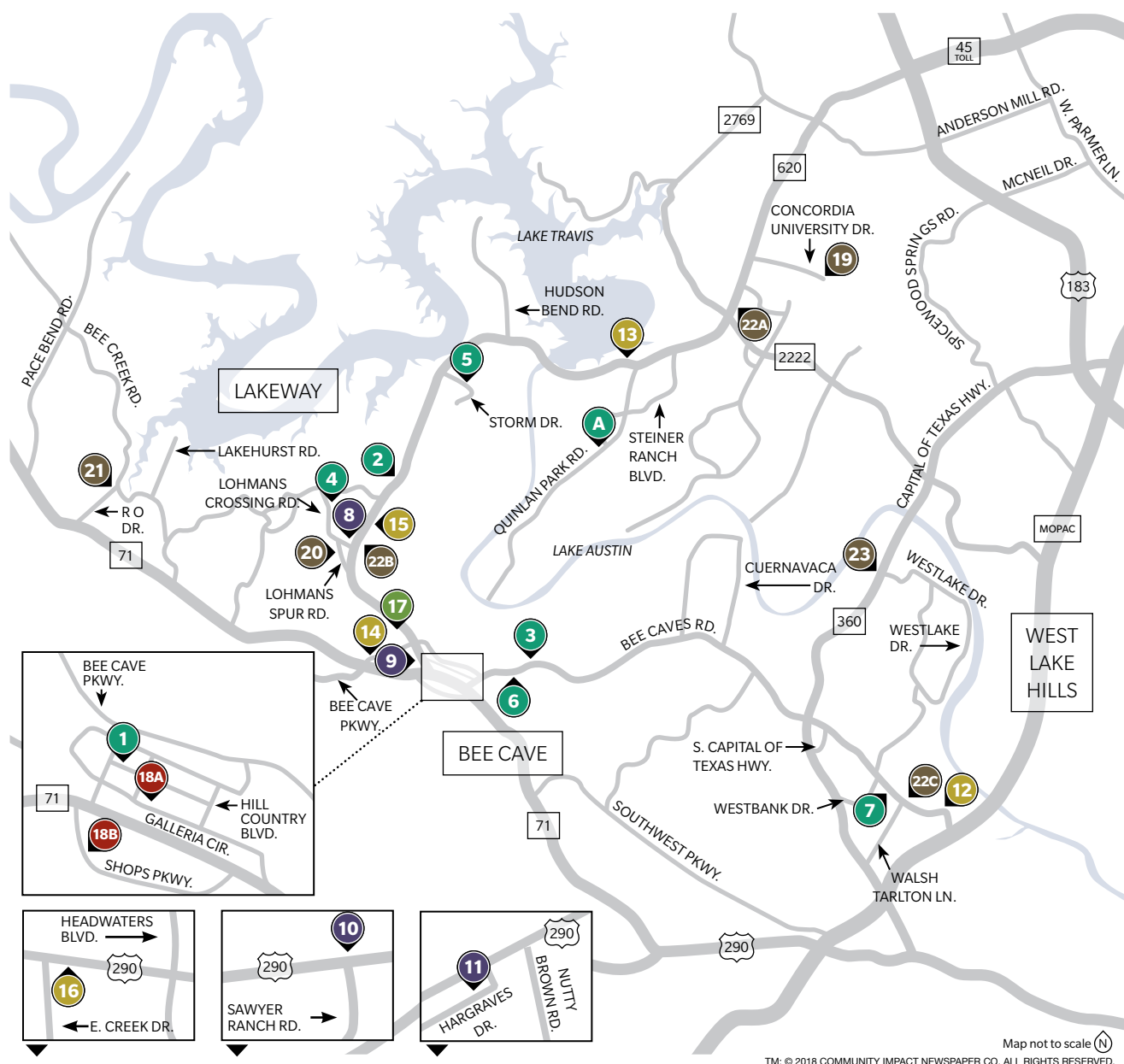
**ECO ESTATE
JEWELRY**

FASHION CONSCIOUS • EARTH FRIENDLY

900 RANCH ROAD 620 SOUTH IN LAKEWAY
512.814.0574 ECOESTATEJEWELRY.COM



DIAMOND NECKLACES
STARTING AT \$299



NOW OPEN

1 Elevé Cosmetics opened its new pop-up store at the Hill Country Galleria on Nov. 23 at 12912 Hill Country Blvd., Ste. F-130. "The brand is excited to bring their 'half makeup, half champagne bar' experience from its Austin flagship store to Bee Cave. Guests are welcome to stop in and browse, test and purchase products from the modern line," a press release said. 512-294-2888. www.elevocosmetics.com

2 Espetos Brazilian Steakhouse opened in mid-October. The churrascaria (similar to barbecue) experience includes a steak buffet and salad bar. The restaurant also offers desserts and fine wines and spirits. 900 S. RM 620, Ste. B108, Lakeway. 512-515-3005. www.espetos.restaurant

3 Austin banking executive and entrepreneur Jeff Wilkinson launched **Keystone Bank** in Bee Cave in October with more than \$20 million in capital. Keystone's headquarters is located at 11500 Bee Caves Road, Ste. 150, as is its first Austin branch. The combined operations employ a total of 20 people. The business will initially focus on

western Travis County and the Hill Country with an emphasis on private banking, commercial real estate, residential real estate and small business loans. 888-266-9707. www.bankkeystone.com

4 LT Senior Services is an organization formed this fall to serve and engage aging adults and their families in the Lake Travis community. LT Senior Services is looking to collaborate with businesses and nonprofit organizations that support senior needs, a press release said. Monthly meetings will be held for networking and discussion, and the speakers will change each month. 1921 Lohmans Crossing Road, Ste. 100, Austin. 512-766-3658. www.ltseniorservices.org

5 The Skull & Crown, a clothing and lifestyle store, opened Dec. 1 in a renovated warehouse at 15301 Storm Drive, Austin. The store, owned by Steiner Ranch resident David Hawkins, carries clothing, leather goods, gifts, accessories, artisan jewelry, furniture and more. Brands sold include Billabong, RVCA, Howler Brothers, Frye, Will Leather Co., Columbia, SAXX, Knuckleheads and Brixton, as well as handcrafted furniture, jewelry and gifts from local artists.

www.theskullandcrown.com

6 SmileDirectClub opened in the Village Oaks Center on Sept. 5. SmileDirectClub's invisible aligners gradually shift teeth into the desired position during a process that takes about six months. The shop accepts appointments and walk-ins. 11905 Bee Caves Road, Ste. 105-A, Austin. 512-492-5697. www.smiledirectclub.com

7 Sway opened a location in West Lake Hills at 3437 Bee Caves Road in early December. The restaurant, which will be open until 2 a.m., offers fresh Thai cuisine, including traditional and innovative dishes seasoned with herbs and made-to-order curries, oysters, housemade sodas and more. 512-326-1999. www.swaythai.com

Assisted Living Locators announced in November the launch of a new franchise in Austin that services the Lake Travis-Westlake area. It offers assistance in locating assisted-living options in Blanco, Hays, Caldwell and Travis counties, a press release said. The franchise is owned by Marilyn Klassen and Dale Woodkey. The service is no cost for seniors and their families and provides

advice on short and long-term care options, including in-home care, independent living, assisted living, memory care and retirement apartments. 512-400-4196. www.assistedlivinglocators.com/saustin

COMING SOON

8 Austin Gourmet Popcorn is opening a second location in the Lakeway Towne Center at 2127 Lohmans Crossing Road, Ste. 304, Lakeway. The store is expected to open in December. 512-351-9059. www.austingourmetpopcorn.com

9 Bahama Bucks plans to open Dec. 11 at 3944 S. RM 620, Bldg. 7, Unit B, Bee Cave. The business will offer shaved ice, smoothies and island vibes, owner Shawn McGrath said. 512-263-8610. www.bahamabucks.com

10 Purewash will be a unique, upscale express-style car wash that will utilize re-captured and recycled water and offer free vacuums in a modern Hill Country design, owner Jeff Betzing said. The car wash will open in late December at 13519 W. Hwy. 290, Dripping Springs. 512-539-6561. www.purewashatx.com

11 Salon Mystique, a full-service salon, will open in Belterra Village in January. Hair services include cut, color, thermal straightening and styling. Salon Mystique will also offer waxing, spray tans, nail services, facials, barbering and massages. Plans for the salon include a 10-chair blowout bar and an in-house cafe. K LEE Cafe will offer small bites and beverages including coffee, tea, fruit smoothies, sandwiches and salads. 166 Hargraves Dr., Ste. B500, Austin. 512-284-4744. www.salon-mystique.com

ANNIVERSARIES

12 Club Pilates Rollingwood celebrates one year in business Dec. 14. The national fitness company offers Pilates classes and private trainings. The Rollingwood franchise is located at 2712 Bee Caves Road, Rollingwood. 512-515-1440. www.clubpilates.com

13 Family Emergency Room has run its Steiner Ranch-area clinic for one year. The group operates other locations in the Austin area. The Steiner Ranch location is at 5012 N. RM 620, Austin. 512-260-2732. www.familyer24.com

14 Hill Country Indoor is celebrating one year in business in December. The indoor sports and fitness facility also offers climbing, archery tag, a playscape, cafe and much more. 13875 Bee Cave Parkway, Bee Cave. 512-263-4144. www.hillcountryindoor.com

15 Hampton Inn & Suites Austin-Lakeway has been in business for 10 years. It hosted a celebration Nov. 15 that included the Lake Travis Chamber of Commerce 'Business off the Clock' event. 2013 S. RM 620, Lakeway. 512-263-7474. www.hamptoninn3.hilton.com

16 Dripping Springs-based **Stay-N-Play Pet Ranch** celebrated 20 years in business in November. Owned by Paul Kennedy, the pet day care facility offers boarding and grooming with customizable packages that can include pet nature walks, enrichment activities, treats and massage services. The ranch is located at 2500 E. Hwy. 290, Dripping Springs. 512-894-7387. www.staynplaypetranch.com

RELOCATIONS

17 **Leslie Henges Dolliver, PLLC** moved to 3700 S. RM 620, Ste. A, Bee Cave, in December. Attorney Leslie Dolliver helps her clients through difficult conversations ranging from collaborative divorces and prenuptial agreements to estate planning, she said, adding she serves as treasurer of Collaborative Divorce Austin. 512-263-5665. www.lesliedolliver.com

CLOSINGS

18 Two **Mattress Firm** locations in Bee Cave are closing after the company announced in October up to 700 stores nationwide would shut down leading up to the holiday season. The Bee Cave locations are at **18A** 12800 Galleria Circle, Ste. 103, and **18B** 12908 Shops Parkway, Unit 100. www.mattressfirm.com

IN THE NEWS

19 **Concordia University Texas** started a mobile medical mission van in October to provide community health services. Ranked fourth in Texas, Concordia's nursing program focuses on community health courses and inspiring students to give back through mission work and service, a press release said. Concordia University is located at 11400 Concordia University Drive, Austin. 512-313-3000. www.concordia.edu

20 **O'Neill's Pools & Hot Tubs** was named in *Pool and Spa News'* annual ranking of top swimming pool and spa service firms across the United States and Canada. The company ranked 44, according to an October press release. "We are humbled and honored to be recognized among this outstanding list of professionals in our industry," CEO Neil En-

FEATURED IMPACT — NOW OPEN



Sloan + Parker opened in the Steiner Ranch area Nov. 8. The wine and beer lounge specializes in craft selections, grape-based beverages and specialty pantry goods from around the world. 2900 N. Quinlan Park Road, Ste. 150, Austin. 949-533-0576. www.sloanandparker.com

gelmann said in the release. 2300 Lohmans Spur, Ste. 122, Lakeway. 512-263-3495. www.oneillspools.com

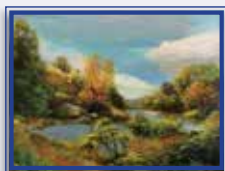
21 Four members of **Spirit in the Hills Lutheran Church** recently celebrated 35 collective extra birthdays since their organ transplants. The extra-birthday party was part of the Lake Travis-area church's observance of National Donor Sabbath Nov. 11. Congregations came together to learn about donation and transplantation and pray for those impacted by it. 3001 R O Drive, Spicewood. 512-294-2884. www.spiritinthehills.org

22 **Tomlinson's Feed** donated 1,896 cans of wet cat food to the Austin Humane Society Nov. 14, which was put to immediate use at the shelter, a press release said. Founded in 1946, Tomlinson's Feed provides natural,

healthy pet products in Central Texas. **22A** The Four Points location is at 7301 N. RM 620, Ste. 110, Austin. 512-215-9242. **22B** The Lakeway store is at 2303 S. RM 620, Ste. 180, Lakeway. 512-344-9111. **22C** The Westlake store is at 3300 Bee Caves Road, Ste. 370, Austin. 512-306-1121. www.tomlinsons.com

23 Austin-based **Venturi Wealth Management** recently expanded into Oklahoma, opening its first office outside of Austin. The expansion will help grow Venturi's combined assets under management to more than \$1 billion three years after Venturi CEO Russ Norwood and CIO George Clark founded the firm. Venturi's Austin office is located at 3600 N. Capital of Texas Highway, Ste. 100, Austin. 512-220-2035. www.venturiwealthmanagement.com

COMPILED BY **SALLY GRACE HOLTGRIEVE**
News or questions about Lake Travis/Westlake?
Email us at ltwnews@communityimpact.com.



HOLIDAY ART SALE | 50-70% OFF
Hundreds of original artwork pieces.
Save 30% off custom framing, too!

ART | FRAMING | DESIGN
ADAMS GALLERIES OF AUSTIN

Hours: Mon-Sat 10Am-6Pm **Lakeway's #1 Frame Shop**

Phone: 512-243-7429 | **Text:** 512-839-8833 1310 RR 620 S., Suite C4, Lakeway



LOCAL EVENTS

DEC. 14

See a live show from an emerging young singer-songwriter

Alaskan singer-songwriter Kaylin Karr takes the stage at Lake Travis Community Library. The young songwriter is developing a sizable fan base and already has several noted songs under her belt, including "No Good for Me," "Hurt by You" and "MVP." Watch for Karr to deliver an intimate performance. 4-5 p.m. Free. Lake Travis Community Library, 1938 Lohmans Crossing, Lakeway. 512-263-2885. www.laketravislibrary.org

COURTESY KAYLIN KARR



DEC. 14

Take in a movie outdoors

The city of Bee Cave Parks and Recreation Department will show "Polar Express" on the lawn of the Hill Country Galleria's Central Plaza. There will be a 4:30 p.m. preshow holiday activity at The Hive, the Bee Cave Arts Foundation's new community art center. 6-8 p.m. Free. Hill Country Galleria, 12700 Hill Country Blvd., Bee Cave. 512-263-0001. www.hillcountrygalleria.com

COURTESY FOTOLIA



DEC. 18

Take a tour of the universe

Attendees of "To Infinity and Beyond: Tour the Universe" will view breathtaking images of galaxies, stars and planets as seen through the eyes of the Hubble Space Telescope. 2:30-3:30 p.m. Free. Belmont Village Senior Living-Westlake Hills, 4310 Bee Caves Road, West Lake Hills. 512-347-1700. www.belmontvillage.com

To-do list

Your ultimate local guide for events, business openings, meetings and more in the months of December and January

Find more or submit Lake Travis/Westlake events at communityimpact.com/ltw-calendar.

Event organizers can submit local events online to be considered for the print edition. Submitting details for consideration does not guarantee publication.



WORTH THE TRIP

DEC. 14-16

Dance and learn at the Day of Tango Festival

The weekend-long celebration of the Argentinian dance features live performances, dance workshops, free beginner's dance lessons and more. Times and ticket prices vary. Friday and Saturday's events will be held at Ben Hur Shrine Auditorium, 7811 Rockwood Lane. Sunday's events will be at Esquina Tango, 209 Pedernales St., Austin. 512-480-0812. www.dayoftango.org

COURTESY ACADEMY OF TANGO TEXAS



DEC. 13

Spice up your shopping with a festive wine walk

Guests can shop in the Galleria while discovering great wines from all over the world. Guests will start at Twin Liquors to pick up a map that is both a guide to the walk and a ticket for each wine walk stop. 5-9 p.m. Free to attend. Hill Country Galleria, 12700 Hill Country Blvd., Bee Cave. 512-263-0001. www.hillcountrygalleria.com

COURTESY HILL COUNTRY GALLERIA

DEC. 14, 15, 16, 20, 21

See a swinging cabaret

A benefit performance of "A Cool Yule" will raise funds for the arts education programs and professional theater at TexARTS. Regular showtimes: Dec. 14, 15, 20, 21 at 7:30 p.m. Holiday party and benefit performance: Dec. 16 at 6 p.m. with a 5 p.m. VIP reception. Tickets start at \$84. TexARTS, 2300 Lohmans Spur, Ste. 160, Austin. www.tex-arts.org

DEC. 15

Attend a holiday-themed concert in Spicewood

Musician Brad Boyer is playing a holiday concert at Spicewood destination Iron Wolf Ranch & Distillery followed by an after-hours performance from The Texas K.G.B. 3-10 p.m. (distillery opens at noon). Free. Iron Wolf Ranch & Distillery, 101 CR 409, Spicewood. 512-970-3203. www.ironwolfbranch.com

DEC. 15

See a reimagined classic

The Bee Cave Youth Players present "Ebenezer High: A Modern Teenage Christmas Carol." This will be a children's community theater fundraising event benefiting post-9/11 veterans and SemperFiFund.org. Two shows at 3 p.m. and 7 p.m. \$10. Lakeway Activity Center, 105 Cross Creek, Lakeway. 512-111-1111. www.eventbrite.com

COURTESY BEE CAVE YOUTH PLAYERS



DEC. 18

Have fun making crafts with the family

Head to the Westbank Library to make glitter snow jars. Among other aspects of the event, participants will learn how to use their breath and the jar for calming effects. 6 p.m. Free. Westbank Library, 1309 Westbank Drive, Austin. 512-327-3045.

www.westbanklibrary.com

JAN. 5

Attend a book discussion with the author

Author Caroline Eick will discuss her book, "Core Emotional Addictions," in which she brings to light how we can get addicted to certain emotions that keep us in self-defeating patterns. 2-3 p.m. Free. Lake Travis Community Library, 1938 Lohmans Crossing, Lakeway. 512-263-2885. www.laketravislibrary.org



THROUGH DEC. 24

Take photos with Santa

This year a professional photo team will be on-site to capture memories with Santa Claus, with photo package options for purchase so guests can leave with a timeless keepsake in hand. Times and package options vary. Hill Country Galleria, 12700 Hill Country Blvd., Bee Cave. 512-263-0001. www.hillcountrygalleria.com

COURTESY JULIA KEIM

LIBRARY EVENTS

BEE CAVE PUBLIC LIBRARY
4000 Galleria Parkway, Bee Cave
512-767-6620
www.beecavetexas.gov

Dec. 13: Book Club, 7-8 p.m. Free.

Dec. 14: Toddler Tales Storytime, two times for the event: 10:30 a.m. and 11:15 a.m. Free.

Dec. 19: Chess Club, 5-6 p.m. Free.

Jan. 3: Knitting Club, 7 p.m.-8 p.m. Free.

LAKE TRAVIS COMMUNITY LIBRARY
1938 Lohmans Crossing, Lakeway
512-263-2885
www.laketravislibrary.org

Dec. 11, 12, 13: Tech Coach, noon. Free.

Dec. 14: Genealogy Group, 9-10 a.m. Free.

Dec. 21: Lego Club, 4 p.m. Free.

LAURA BUSH LIBRARY
9411 Bee Caves Road, Austin
512-327-3045
www.westbanklibrary.com

Dec. 17: Qi Gong, 10-11 a.m. Free.

Dec. 20: Children's Storytime, 10:30 a.m. Free.

Dec. 20: Smart Schooling Book Group, 6 p.m.-7 p.m. Free.

Dec. 27: Quilters, 12:30-3 p.m. Free.

SPICEWOOD COMMUNITY LIBRARY
1011 Spur 191, Spicewood
803-693-7892
www.spicewoodlibrary.org

Dec. 12: Lawyer in the Library, 4-6 p.m. Free.

Dec. 13: Spicewood Butterflies Healthy Eating, 10-11 a.m. Free.

Dec. 27: Spicewood Butterflies Healthy Eating, 10-11 a.m. Free.

WESTBANK COMMUNITY LIBRARY
1309 Westbank Drive, Austin
512-327-3045
www.westbanklibrary.com

Dec. 18: Family Night: Glitter Snow Jars, 6-7 p.m. Free.

Dec. 21: Knit Wits, noon-3 p.m. Free.

Dec. 29: Sheng Zhen: Seated Qi Gong, 11 a.m.-noon. Free.

Gift them the treats
and toys that make those
insufferable costumes
worth it.

TOMLINSON'S

Central Texas' Favorite Pet Store

With Locations in
Four Points | Lakeway | Westlake

**my human
has lost it.**

Stuff Your Stocking!

15% OFF ANY TOYS,
TREATS,
OR BONES

STUFFED IN A TOMLINSON'S STOCKING

Snag a free stocking and get 15% off all
treats, toys, & bones you stuff inside. One per
customer, one time use, while supplies last.



HILL COUNTRY
GALLERIA

*Enjoy special holiday amenities
all season long*

JOY+
STYLE



*Visit Santa's indoor Wonderland & enjoy
daily holiday tree shows in the Central Plaza*

WEEKEND VALET PARKING GIFT WRAPPING COMPLIMENTARY SHUTTLE CART
GIFT CARD KIOSK EXTENDED HOLIDAY SHOPPING HOURS FAMILY-FRIENDLY
HOLIDAY EVENTS AND PLENTY OF FREE PARKING

CALL OUR CONCIERGE TO INQUIRE 512.263.0001

LULULEMON + H&M + SALTGRASS STEAK HOUSE + LEARNING EXPRESS TOYS + ESTILO

12700 Hill Country Blvd. | Bee Cave, TX 78738 | HillCountryGalleria.com   [HillCountryGalleria](http://HillCountryGalleria.com)  [HCGalleria](http://HillCountryGalleria.com)

WORTH THE TRIP

DEC. 19

See 'Sesame Street' come alive

The colorful cast from "Sesame Street" perform dance routines and songs in the "Sesame Street Live! Let's Party!" event at the H-E-B Center at Cedar Park. 10:30 a.m. and 3:30 p.m. start times. \$35.75-\$100.75. 2100 Avenue of the Stars, Cedar Park. 512-600-5000. www.hebcenter.com



COURTESY H-E-B CENTER AT CEDAR PARK

HILL COUNTRY GALLERIA

12700 Hill Country Blvd., Ste. T-100, Bee Cave. 512-263-0001. www.hillcountrygalleria.com

Dec. 27: Live music at the Ginger Man featuring Tom & Shane's All Natural Music, 7 p.m.

IRON WOLF RANCH & DISTILLERY

101 CR 409, Spicewood. 512-970-3203. www.ironwolfranch.com

Dec. 15: Making Spirits Bright, 3-10 p.m. (opens at noon)

Jan. 5: Jo James, 3-6 p.m.

Jan. 12: Thawind Mills, 3-6 p.m.

THE OASIS ON LAKE TRAVIS

6550 Comanche Trail, Austin. 512-266-2442. www.oasis-austin.com

Dec. 31: New Year's Eve Bash with

Dysfunkshun Junkshun, 7 p.m.-1 a.m.

ONE WORLD THEATRE

7701 Bee Caves Road, Austin. 888-616-0522. www.oneworldtheatre.org

Dec. 16: Beto and the Fairlanes Merry Texmas, 8 p.m.

GRUMPY'S SALOON

1113 RM 620, Lakeway. 512-382-5441. www.grumpyslaketravis.com

Dec. 13, 20, 27: Carl Hutchens Live, 8 p.m.

POODIES ROADHOUSE

22308 W. Hwy. 71, Spicewood. 512-264-0318. www.poodies.net

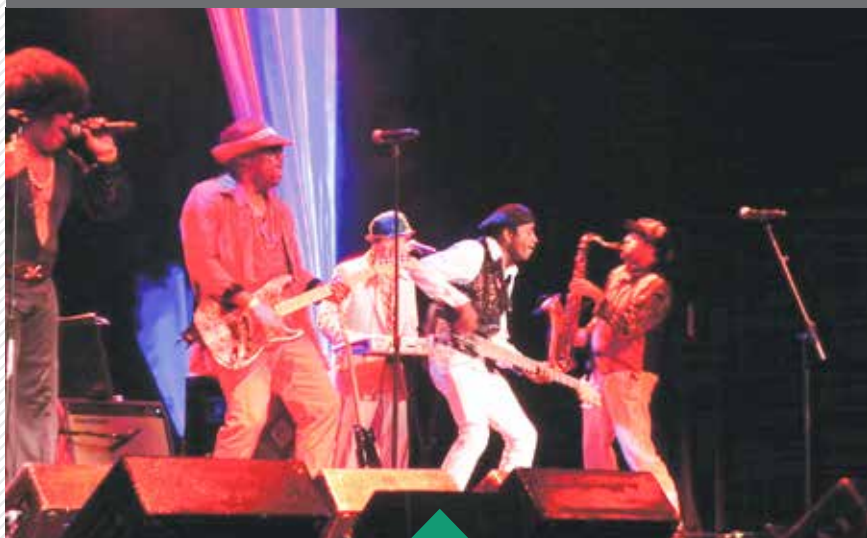
Dec. 15: Robert Kline Jr., 8 p.m.

Dec. 28: Tombstone Wasteland, 10:30 p.m.

Dec. 21: Troy Hanna and Co., 8 p.m.

Dec. 29: Bee Gees Songbook, 9 p.m.

Dec. 31: The Damn Torpedos, 10 p.m.



DEC. 31

Celebrate New Year's Eve in true retro fashion

Austin favorite Dysfunkshun Junkshun will jam out with its blend of R&B, Top 40, '70s funk, Motown and more. No reservation required for general dining. 7 p.m.-1 a.m. \$160 plus tax, includes alcohol, and there is a suggested 20 percent gratuity. The Oasis on Lake Travis, 6550 Comanche Trail, Austin. 512-266-2442. www.oasis-austin.com

COURTESY DYSFUNKSHUN JUNKSHUN



**Fly Fishing, Archery, Firearms, Trips,
Optics, Cameras, Training, Gift Cards**



**This Holiday Season Visit
The Finest Outdoor Store in Central Tx!**



**www.SportsmansFinest.Com
Bee Cave & 71**



The University of Texas at Austin
UT Health Austin



 /UTHEALHTHAUSTIN
 @UTHEALHTHAUSTIN
 @UTHEALHTHAUSTIN

**THANK YOU FOR A
GREAT YEAR,
AUSTIN.** AND HERE'S TO
A HEALTHY 2019

uthealthaustin.org

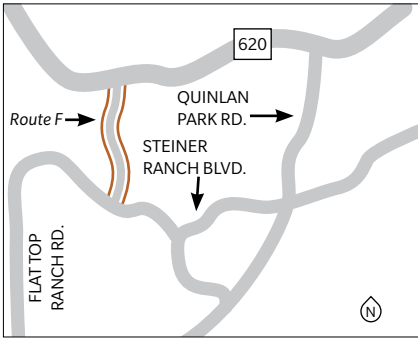
1-833-UT-CARES

RECENT UPDATES

Steiner Ranch evacuation route

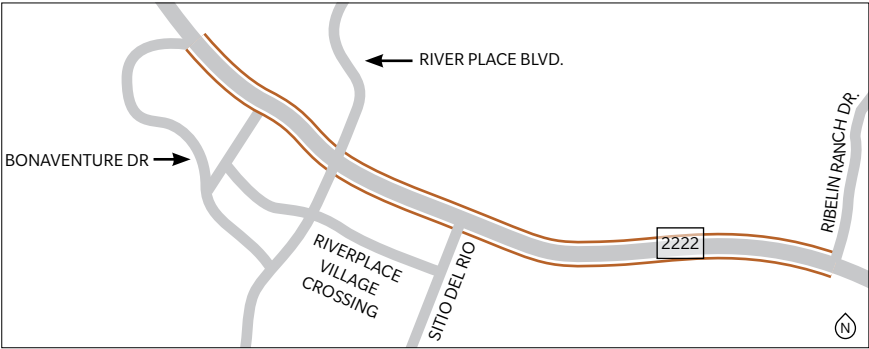
The additional escape route for residents of the Steiner Ranch area was under preliminary design earlier this summer. There was an open house Aug. 9 at Canyon Ridge Middle School to get feedback from area residents. Travis County Engineer Senior Kathy Hardin said plans at that time still included 12 different route options. The county held a working group meeting Nov. 13 that included agency stakeholders, such as first responders and law

enforcement officers as well as community representatives. Hardin said the county is now making a recommendation of Route F, which would connect Flat Top Ranch Rd. to RM 620. Route F cannot be built with the current budget, she said, so the county is looking for funding. Hardin said the project’s cost of \$2.7 million has changed and should be made clearer following an as-yet unscheduled open house.



RM 2222 extension from Bonaventure Drive to Ribelin Ranch Drive

Crews started placing perimeter barricades and signs the week of Nov. 26 for the project intended to add a lane eastbound from Bonaventure Drive to Sitio Del Rio Boulevard and a lane westbound from Ribelin Ranch Drive to Sitio Del Rio, said Bradley Wheelis, Texas Department of Transportation public information officer. He added that work to clear the right of way was scheduled to begin Dec. 3. “Clearing of the right of way will allow work to begin on utility relocation within the project limits. Construction on the roadway itself is anticipated to start in January, weather permitting,” Wheelis said.



The project will also include turn lanes and raised medians to be built within the project limits. **Cost:** The Texas Transportation Commission awarded the contract for

\$23.6 million to Capital Excavation Co. The total includes utility costs at \$6.4 million. The city of Austin contributed \$7.5 million to the total with TxDOT paying for the remainder.



COURTESY NORTH TEXAS TOLLWAY AUTHORITY

HOW IT WORKS
Driving with no toll tag

All tolling authorities set their own fines for driving on toll roads without a toll tag and may charge late fees. The North Texas Tolling Authority charges violators at least 50 percent more than drivers with toll tags, according to NTTA officials, and late charges apply. Motorists who use Texas Department of Transportation toll roads without a tag are charged the toll road price and a \$1.50 mailing fee, according to officials with TxTag, TxDOT’s toll-collection system. Past due payments incur a \$4 monthly late fee and can result in a \$250 court fine.

All information on this page was updated as of 11/30/18. News or questions about these or other local transportation projects? Email us at ltwnews@communityimpact.com.



WESTERLY
THREE SIXTY

Now Leasing! Modern Luxury. Timeless Design.

Experience the luxury and convenience of urban living nestled within the beauty and distinction of Westlake Hills.

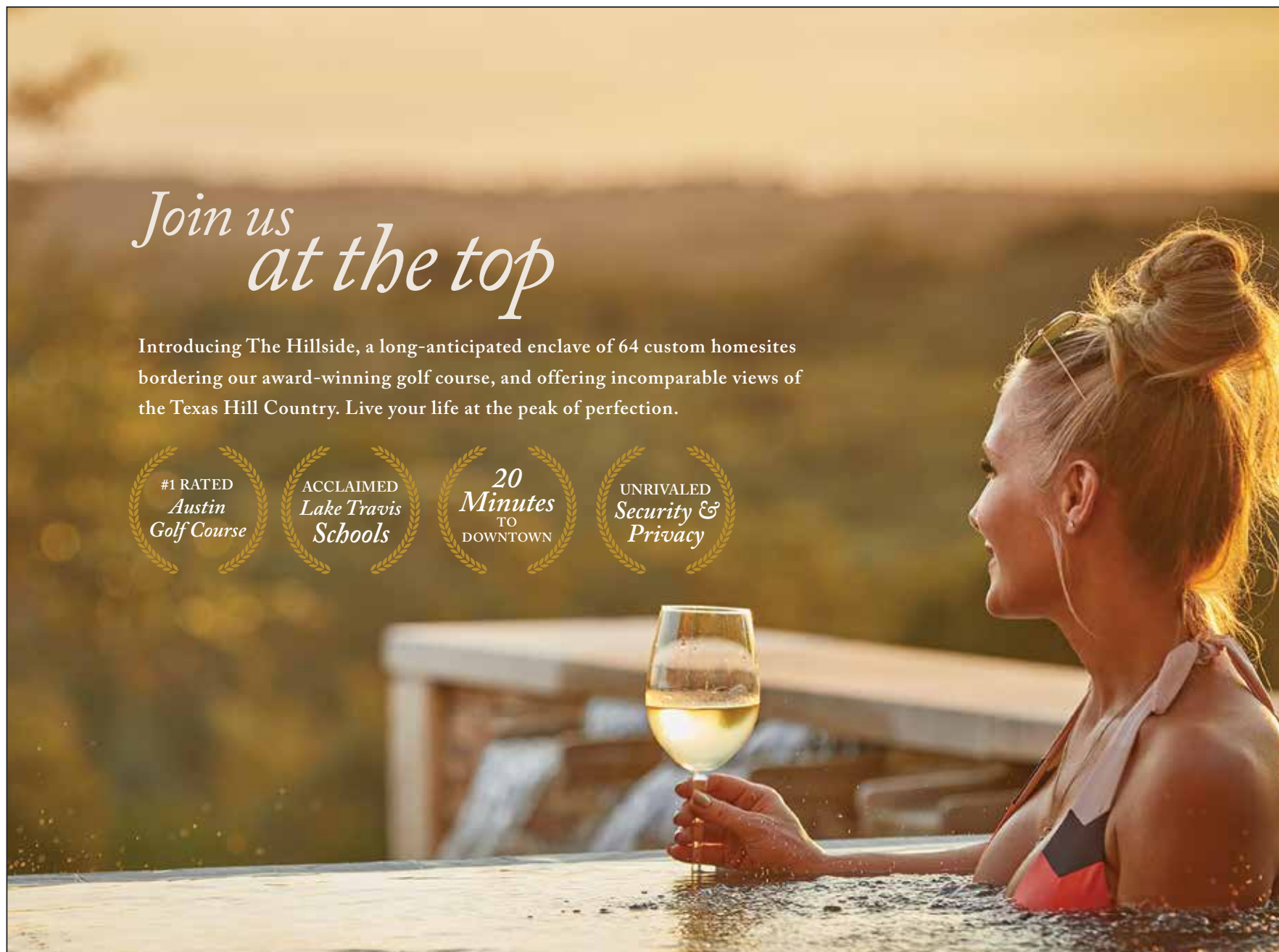
Current Special: 6 weeks free on 1B/2B apartments for new 13-15 month leases | Look and Lease Special: \$99 Application and Administrative fee

*Specials are subject to change

Apartment Homes and Townhomes Located in Westlake Hills
2500 Walsh Tarlton Ln. Austin, TX 78746 ~ 512-327-WEST(9378) ~ Westerly360.com

Join us at the top

Introducing The Hillside, a long-anticipated enclave of 64 custom homesites bordering our award-winning golf course, and offering incomparable views of the Texas Hill Country. Live your life at the peak of perfection.



SPANISH OAKS

HOMESITES FROM 300s /// HOMES FROM 900s
512.533.2300 /// SPANISHOAKS.COM

Spanish Oaks Realty, LP reserves the right to discontinue or modify all prices, plans, designs, specifications, features and materials at any time without notice or obligation. All square footage and dimensions are approximate. No Federal or State agency has judged the merits or value, if any, of this property. All content (including, but not limited to pictures, logos, verbiage) contained in this material is protected by law and any usage of such material by 3rd parties is strictly prohibited without express written permission by Spanish Oaks Realty, LP or its affiliates. ©2018 Spanish Oaks Realty, LP 



FEATURED LISTINGS /// *More listings at SpanishOaks.com*



5516 Laceback Terrace
\$5,975,000 /// 7,528 Sq. Ft. /// 5 Bdrm /// 7 Baths



4721 Monte Carmelo Place
\$1,695,000 /// 3,923 Sq. Ft. /// 4 Bdrm /// 4 Baths



TRANSPORTATION

Both photos of Bee Caves Road construction were taken in August. Residents can expect the project to be complete at the end of 2019.

PHOTOS COURTESY TEXAS DEPARTMENT OF TRANSPORTATION

Bee Caves Road project to see work on most dense section in the coming year

BY **SALLY GRACE HOLTGRIEVE**

After several years of construction, work on Bee Caves Road, or RM 2244, is expected to be complete at the end of next year.

The improvement project includes constructing a center turn lane between Redbud Trail and Walsh Tarlton Lane as well as adding shoulders and sidewalks within the project limits. The conversion of the existing four-lane roadway into a five-lane roadway will enhance safety and mobility.

Construction was originally slated to begin in mid-2016, but due to private utility relocations crews did not begin work on the roadway until late 2016, said Bradley Wheelis, Texas Department of Transportation public information officer.

Wheelis said some private utility relocations are still incomplete, but crews have shifted work locations and phasing to move forward, and construction crews continue to work on underground utilities, including wastewater and water lines. Progress in 2018 included the expansion of the roadway from Redbud to Buckeye Trail, including sidewalks and

shoulders. The north side of Bee Caves was expanded from Buckeye to Camp Craft road in mid-November.

"We anticipate the roadway to be expanded on the south side of the roadway later this year, weather permitting," Wheelis said. "Crews continue work to install sidewalks and retaining walls in various locations throughout the limits."

Getting utility issues worked out was one of the biggest steps, said Robert Wood, West Lake Hills city manager.

Mayor Linda Anthony agreed that once utilities were moved residents could finally see work being accomplished.

"As far as major roadway construction projects through urban areas go, this has gone incredibly smooth," Anthony said. "There have been as few adverse impacts on traffic flow as we could expect."

She added that TxDOT has done a good job of working whenever weather permits and keeps a clean job site.

"Staff have been attentive to business, resident and commuter concerns and keep us and the media in the



ASK TxDOT

What is most important for residents to know about upcoming work on Bee Caves Road?

Several traffic shifts will occur during the expansion of Bee Caves Road from Westlake Drive to Walsh Tarlton Lane. The most important thing for residents to know about the upcoming work on Bee Caves is to stay alert, watch for road signs and exercise patience as crews finish construction.

loop," Anthony said.

Prior to expanding the roadway from Buckeye to Camp Craft, crews lowered two adjacent streets, McConnell Drive and Westhaven Drive, to allow for a smooth transition to Bee Caves once expanded, Wheelis said. TxDOT anticipates the part of the project in which Buckeye is lowered will begin later this year, weather permitting.

The next leg of the project, from

Westlake Drive to Walsh Tarlton, has a dense business population, which is taken into consideration as work progresses, Wheelis said, adding the goal is to balance traffic flow without compromising safety.

"At times there may be a need to reduce Bee Caves Road to one lane in each direction in order to complete work safely," he said. "Access to all businesses will be maintained."

Whole Earth PROVISION CO.

A gift for you!

\$10 OFF
your next *in-store* purchase

NOT VALID FOR ONLINE PURCHASES

COUPON VALID AT ANY WHOLE EARTH PROVISION CO. RETAIL LOCATION. NOT REDEEMABLE FOR CASH. MAY NOT BE COMBINED WITH OTHER OFFERS OR USED TOWARDS ONLINE OR GIFT CARD PURCHASES. ONE COUPON PER CUSTOMER PLEASE.

EXPIRES 12.24.18

Find a store near you at WholeEarthProvision.com

Celebrate the Occasions of Life

SJ

SEGNERS'S JEWELERS
FREDERICKSBURG • BEE CAVE

www.segnersjewelers.com

12400 Hwy 71 W. Suite 708 | Bee Cave, TX
(512) 288-5457

Need Pet Sitting Services THIS HOLIDAY SEASON?



Serving the Lakeway and Bee Cave Community
Austin Owned and Operated, Insured and
Bonded, Pet First Aid Certified

512-945-5598

Visit our website for pricing and packages

PAWSnCLAWSPETSITTERS.CO



BELMONT *Village*

SENIOR LIVING

Distinctive Residential Settings | Chef-Prepared Dining and Bistro
Premier Health and Wellness Programs | Award-Winning Memory Care
Professionally Supervised Therapy and Rehabilitation Services

Happy Holidays from Belmont Village!

The Community Built for Life.®

LAKEWAY | 512-402-1800

WEST LAKE HILLS | 512-347-1700

belmontvillage.com    



 © 2018 Belmont Village, L.P. | ALF 101787, 105870

Christmas Eve
December 24th

JESUS
WHO?

acts
CHURCH
LAKEWAY

3:00 p.m. or 4:30 p.m. ► Nursery Care available

1304 RR 620 N. / Austin Texas 78734 / (512) 263-8175 / actschurchlakeway.com

24-MONTH
Certificate of Deposit (CD)

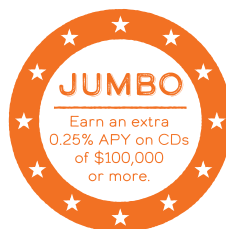
2.55%
APY

MOST
POPULAR

Rates Designed
to Reach Goals

Get a competitive rate with term
options as flexible as 3 to 60
months. Plus, CDs of \$100,000 or
more earn an additional 0.25% APY.

Visit **UFCU.org/EarnMore** or call
(866) 968-6930 to open a CD today.



60-MONTH
Certificate of Deposit (CD)

3.00%
APY

EXCELLENT
RETURNS

Federally insured by NCUA
APY = Annual Percentage Yield
Rate effective as of September 14, 2018
Rates are subject to change



UFCU.org



Central Texas departments provide crews to California fire relief effort in November

BY BRIAN RASH

Gov. Greg Abbott announced Nov. 11 that firefighters and equipment from throughout the state of Texas would head to California to assist with the deadly wildfires still raging through several parts of the state.

About 200 firefighters and teams from the Texas Forest Service at Texas A&M University began deploying to California on Nov. 11, according to information from Abbott's office. The aid effort also included 55 fire engines. Several Central Texas fire departments were included in the relief effort, including Kyle, Austin, Lake Travis, Round Rock and Travis County.

Oak Hill Fire Department Chief Jeffrey J. Wittig said his department sent one large fire engine and three firefighters to California on Nov. 12.

Wittig confirmed that all 37 firefighters from Central Texas had returned home safe by Nov. 21, the day before Thanksgiving.

They were assigned to the Woolsey Fire that burned through the Los Angeles and Malibu areas.

That fire was declared 100 percent contained on Thanksgiving Day.

"And that's not uncommon," he said, referring to the fact that the Texas firefighters came home before

the fires reached full containment. "Once you get to the higher percentage of containment, there's not a lot of fire activity. There are just little pockets of fires here and there that they still have to address."

He said there were many reasons to send firefighters to aid in disaster-relief efforts outside of Texas.

"No. 1 is helping the people in California," he said. "We also support these kinds of things because it's the best training our people can get to learn how to do things they wouldn't normally see in their environment."

Texas is divided into seven segments for the Texas Intrastate Fire Mutual Aid System. Wittig said he serves as one of the seven branch resource coordinators for the TIFMAS program and is responsible for identifying and rostering resources from 24 counties ranging from Llano to Col-

lege Station and down through Victoria to the Texas coast.

The Central Branch of TIFMAS deployed two task forces composed of 37 firefighters on 13 trucks from the Austin Fire Department,

Bryan Fire Department, Kyle Fire Department, Lake Travis Fire Rescue, Oak Hill Fire Department, Round Rock Fire Department and Westlake Fire Department,

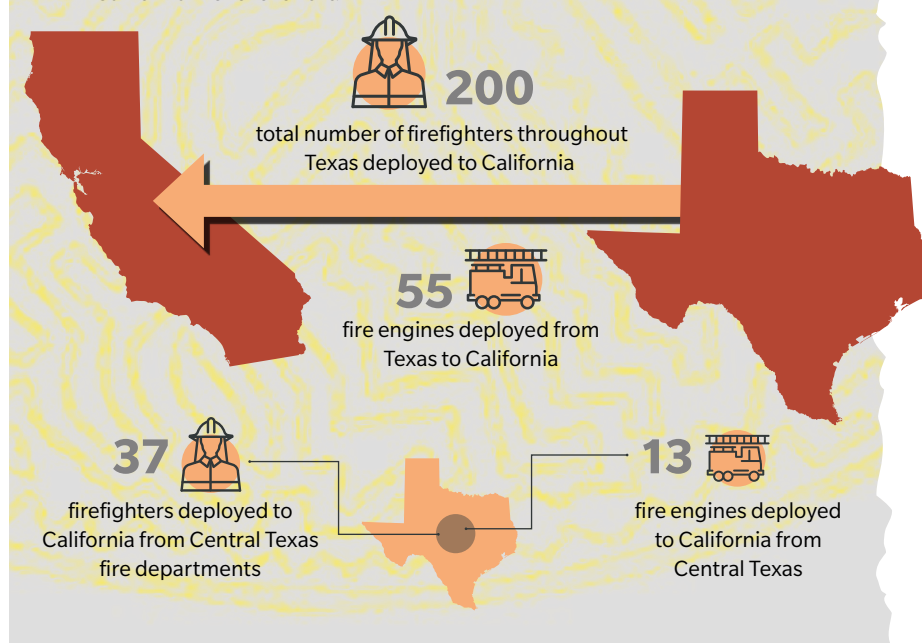
"NO. 1 IS HELPING THE PEOPLE IN CALIFORNIA. WE ALSO SUPPORT THESE KINDS OF THINGS BECAUSE IT'S THE BEST TRAINING OUR PEOPLE CAN GET TO LEARN HOW TO DO THINGS THEY WOULDN'T NORMALLY SEE IN THEIR ENVIRONMENT."

—JEFFREY J. WITTIG,
OAK HILL FIRE DEPARTMENT CHIEF

HELPING FROM

Across the country

The following data show Texas and Central Texas' contributions to the California fire relief effort.



SOURCE: OAK HILL FIRE DEPARTMENT CHIEF JEFFREY J. WITTIG/COMMUNITY IMPACT NEWSPAPER

Wittig said.

Braden Frame, communications director for the Lake Travis Firefighters Association, said Lake Travis Fire Rescue sent three firefighters to California on Nov. 12—Battalion Chief Eric Carlson, Lt. Travis McAnally and Lt. Adam Griggs.

Frame said all three are certified with TIFMAS as firefighters with specialties in structural firefighting and as task force leaders.

"In layman's terms it means it they can put out fires as well as lead people," he said.

He added Lake Travis firefighters deployed with a Brush Truck 605, a Type-VI Wildland Fire Engine. It is a four-wheel drive, dual rear-wheel axle vehicle capable of transporting firefighters off road while carrying 400 gallons of water with a portable

pump that can deliver up to 240 gallons of water per minute.

Frame also said the cost of the relief effort was not going to put a strain on Texas. The state of California will pick up the tab, he said.

"We've been asked and want to assure our taxpayers that this deployment, like every [TIFMAS] deployment, is 100 percent cost-neutral," he said. "Thanks to state and federal disaster declarations, Travis County taxpayers aren't on the hook for costs."

The firefighters from LTFR were sent on a two-week deployment, which Wittig said included about 2.5 days of travel on each side of the deployment.

"They didn't get any down time," Wittig said. "They were either traveling or working or traveling."





Magpie Blossom Boutique

When Ordinary Just Won't Do

FLOWERS - GIFTS - HOME DECOR

MagpieBlossoms.com

3500 Ranch Road 620 S. F100, Austin, TX 78738 | (512) 494-6198

FLORIST REVIEW

2018

RETAIL FLORIST OF THE YEAR

WFAA

REX charges 70% less than traditional agents.

Traditional agents like fine print and big commissions. Us, not so much. With REX you pay just a 2% total fee to sell your home, not the 6% agents typically charge.

Full-service. Lowest fee.
Game-changing technology.



REX was one of the best decisions we have ever made for buying and selling our home. Their innovative approaches to real estate allowed us to sell our house within days of putting it on the market.

*The Gregory Family
Bought and Sold with REX*

Qualify in minutes

Call (512) 746-7177



©2018 REX. All rights reserved. Licensed Real Estate Broker #9006916

Lakeway committee extends deer census

A third population count has been approved to occur in December

BY BRIAN RASH

Lakeway Wildlife Advisory Committee members agreed to shore up an evolving information-gathering campaign regarding the city's deer population.

During a Nov. 8 presentation by newly contracted wildlife biologist Warren Bluntzer, the WAC voted 5-1 to conduct an additional spotlight survey that would combine with a December 2017 survey and a planned September 2019 survey to help more accurately tally the number of deer in the area.

"I think I owe it to you all to ask for another survey," Bluntzer said.

His request reflects ongoing calls from city residents and officials for more information on the exact scope of both the number of deer and how deer-human interactions are impacting the overarching Lakeway ecosystem.

Public outcry for more information also contributed to City Council placing a one-year moratorium on the city's controversial Trap, Transport and Process program. The TTP has resulted in the trapping and killing of thousands of deer since being implemented in 1999, according to data provided by the city of Lakeway. Shortly after the issuance of the moratorium Aug. 20, Lakeway City Council authorized the hiring of Bluntzer on Sept. 18 based on a recommendation from WAC.

Since being officially contracted by the city of Lakeway in October, Bluntzer has set in motion strategies seeking to gather more accurate field data on the deer population. This

way officials and residents can use the data to better address problems resulting from the city's deer co-mingling with its growing human population, he said.

Several members of Citizen Advocates for Animals, a group that also hired its own wildlife biologist to conduct a deer population survey at the end of 2017, attended the WAC meeting. One major issue brought up by WAC and CAFA members Nov. 8 was the increasing number of incidents resulting in unnecessary deer fatalities.

To that end WAC member Ted Windecker told Bluntzer that while population surveys could prove beneficial, it is most important to concentrate on problems generated by deer-human interaction.

"We know that 20 years ago we had 10 times as many deer here, and that was a problem because of the drought and starvation," Windecker said.

If the community could develop a methodology for living with four deer per acre while eliminating the problems associated with that ratio, then it would not be necessary to harvest deer, Windecker said.

Bluntzer said he did not totally agree with Windecker and that he would never want to have deer living in a habitat that did not provide an ideal biological setting for the animals.

A normal situation on a suitable habitat in the Texas Hill Country consists of about one deer on every 10-12 acres, Bluntzer said. In an urban area like Lakeway a better ratio is about



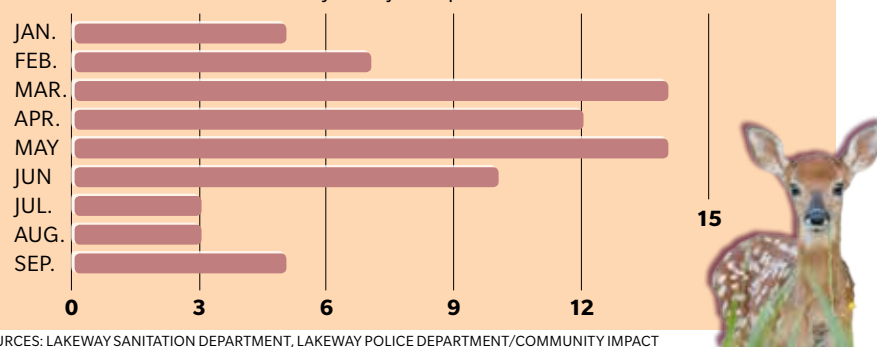
Lakeway residents attended the Nov. 8 Wildlife Advisory Committee meeting.

"WE KNOW THAT 20 YEARS AGO WE HAD 10 TIMES AS MANY DEER HERE, AND THAT WAS A PROBLEM BECAUSE OF THE DROUGHT AND STARVATION."

— TED WINDECKER, WILDLIFE ADVISORY COMMITTEE MEMBER

INCIDENTS WITH DEER

This graphic depicts how many deer carcasses have been picked up by the city of Lakeway from January to September 2018.



SOURCES: LAKEWAY SANITATION DEPARTMENT, LAKEWAY POLICE DEPARTMENT/COMMUNITY IMPACT NEWSPAPER

one deer per every 20 acres, he said.

"Remember, the habitat that we have here has been disturbed a long time ago. It's not what we call a primo deer habitat," Bluntzer said. "That doesn't mean we can't tolerate some animals that can live here, but we have to consider what we've got here for them, and front yards and golf courses are not the most healthy thing in the world for white-tailed deer."

Bluntzer said he was also happy to work with Nick Kolbe, the wildlife biologist hired by CAFA, for the

December spotlight survey. Throughout his presentation at the WAC meeting Bluntzer frequently referred to the survey work Kolbe conducted in December 2017, citing it as solid data.

"I know that CAFA did a census out here, and I have since met the young man that did that census, and I reviewed that data—the routes that he took and the methodology that he used—and I'm OK with that," Bluntzer said. "I looked at it closely, and I don't have a problem with it at all."



LEGACY OAKS
OF LAKEWAY

LIMITED OFFER

Huge Savings

PREMIER ASSISTED LIVING & MEMORY CARE

Earn a 3-year rate lock when you move into Legacy Oaks!
Take advantage of this limited offer before it runs out.

300 Medical Parkway, Lakeway, TX 78738 • 512-402-1222 • www.LegacyOaksOfLakeway.com




106031

Let us set your diamond!

Master Bench Jeweler Robert Harrison has very high standards for his customers. All diamonds are set on the premises, and there is a full-time jeweler in-house at all times. **So why go anywhere else to set your stone?!**

Need a piece repurposed? We can help you fall in love with your jewelry all over again!

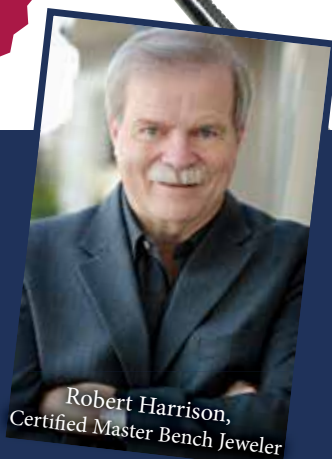
LAST-MINUTE SHOPPERS
WE HAVE YOUR BACK!

OPEN
DEC. 24TH

HARRISON JEWELERS

THE STORE YOU'LL APPRECIATE

2127 Lohmans Crossing Rd., Suite 300
Lakeway, Texas • 512-266-1715
www.harrisonjewelerslakeway.com



ARMADILLO CHRISTMAS BAZAAR®

A fun holiday shopping experience!



DEC 13-24

PALMER EVENTS CENTER | 11AM—10PM DAILY

ARMADILLOBAZAAR.COM



LIVE MUSIC DAILY

Dale Watson • Mélat • Ray Wylie Hubbard
Carolyn Wonderland • Shane Smith and the Saints
Marcia Ball's Pianorama • Nakia and the Blues Grifters
Shinyribs...and more!



Situated in the heart of scenic Lake Travis,
we are your home away from home!



Under New Ownership
and Newly Renovated



GIVE US A CALL TODAY!
\$10.00 off
per night
FOR LOCAL RESIDENTS
AND THEIR FRIENDS
OR RELATIVES

512 263-2010
MOUNTAINSTARLODGE.COM

3573 RR 620 SOUTH, AUSTIN, TX 78738



\$48.03 million of proposed 2019 bond could fund space for aquatics, wrestling, robotics

EANES ISD A new aquatics facility, Westlake High School robotics expansion and a multipurpose facility that would accommodate the wrestling team were all discussed as options for the proposed 2019 bond.

Members of the Eanes ISD board of trustees have been discussing possible bond items for several months. The focus of the Nov. 27 discussion was on facilities.

The proposed bond total to spend on the facilities category was \$48.03 million.

Other proposed items in the facilities category included plumbing work at about \$2.18 million, replacing the current portable classrooms with new "learning studios" at about \$4.01 million and renovating the food service area at Westlake High School at about \$653,000.

The final category, student programs and support, will be discussed at the Dec. 11 board meeting.

The board is scheduled to call a bond election Jan. 29, and residents would vote on the bond May 4.

PROPOSED AQUATICS FACILITY

- 25-yard **competition pool**
- Springboard for diving
- Locker rooms, showers
- Spectator seating
- Estimated bond cost: **\$9.29 million**
- Estimated annual maintenance and operations cost: **\$400,000-\$450,000**
- Estimated annual revenue: **\$100,000-\$150,000**

PROPOSED MULTI-PURPOSE FACILITY

- Capacity for **two full-size wrestling mats**
- A restroom
- Estimated bond cost: **\$1.81 million**
- Estimated annual maintenance and operations cost: **\$28,000**

PROPOSED ROBOTICS EXPANSION

- **Two-story** construction project
- Two additional **classrooms**
- A **robotics competition** practice area; could free up about two and a half classrooms and a cafeteria
- Estimated bond cost: **\$2.91 million**
- Estimated annual maintenance and operations cost: **\$36,000**

SOURCE: EANES ISD/COMMUNITY IMPACT NEWSPAPER



St. Stephen's student making prosthetic limbs

ST. STEPHEN'S EPISCOPAL SCHOOL Senior Jenna Rogge came to the school's Project Idea and Realization Lab with an interest in prostheses and a desire to build a prosthetic hand.

A news release states Rogge spent about 90 hours designing, scaling, printing and assembling all the parts for a functional prosthetic hand she named the Raptor. Once completed she identified areas for improvement and set about working on a new design. She was assisted by Educational Technology Coordinator Nicole Wortham, the release stated.

The lab is equipped with butcher block tables, storage and stability stools as well as equipment, such as the Stereolithography 3-D printer that uses ultraviolet light to cure a

liquid resin. Wortham announced to the school community Nov. 1 that Rogge had earned her first "badge" for production and assembly of her second prosthetic limb, which she nicknamed the Cyborg Beast.

"Earning a production badge means that Jenna is now able to search through case files and identify a child in need of a prosthetic limb, 3-D print and assemble the hand, and then send it off to its new owner," Wortham said.

Rogge is already working on assembly changes to her original Raptor and hopes to send that design off for a badge, Wortham added. She is also working on a prosthetic finger and looking for ways to design a full-arm replacement limb made out of flexible filament.



St. Stephen's senior Jenna Rogge creates her "Raptor" prosthesis.



Rogge is shown with her prosthesis and Head of School Chris Gunnin.

Recent memorial scholarship honors Lake Travis ISD student

LAKE TRAVIS ISD The Lake Travis community recently created the Erik Kyle Hanson Memorial scholarship, member of the scholarship advisory board MJ Hurt said. It will be awarded annually to a Lake Travis High School football player not receiving a D1 or D2 offer. The first will be awarded this spring, and the ideal recipient, like Hanson, will exemplify selflessness, community service, leadership and teamwork, Hurt said.

"It is our hope to open the dialogue in our schools and community that mental illness and anxiety are no different and should not be treated any differently than other diseases," Hurt said, adding people with depression and anxiety need to feel supported and safe, and those closest to them need to understand how to assist them in seeking treatment.

The scholarship is funded by the community and private donors and administered by the Lake Travis Football Booster club.



RUSSELL
ART & FRAME

30 YEARS OF EXPERIENCE AND EXPERTISE

Protect, Preserve and Embellish any of your prized possessions!

Russell Collection offers quality picture framing craftsmanship to consumers, art collectors, interior designers and commercial clients. Whether you have a \$150,000 original, your child's latest finger painting, or a print you picked up on your last trip, we will take great care of you!

All materials are preservation quality and museum standard

The Oaks at Lakeway | 1516 RR 620 S Suite 120 | 512.645.0668 | Hours: Monday – Saturday 10am – 6pm



\$40 OFF



Custom picture frame order.
Limit one per customer per order. Must present coupon upon placing order. Expires 1/15/2019





Introduce your kids to computer programming with Launch.

Offering **coding** and technology **summer camps** and **after school classes**. Call or visit us online to schedule a **free trial** class.

(512) 337 6624 launchafterschool.com

 **Located in Davenport Village**
3801 N Capital of Texas Hwy bldg d-suite 130
Austin, TX 78746

Actual Patient



CREATING GREAT SMILES
for a Successful Future



DEL TORO
ORTHODONTICS

Fidel Del Toro, DDS, PhD
Jonathon Kimes, DDS

Serving Area Families since 2001

High Tech Braces | Invisalign | Personalized Care
Children and Adults Welcome

12500 Bee Cave Road
(at Hwy 71 behind Compass Bank)
*Second location: Circle C Orthodontics

512-402-1501
www.austin-braces.com

CELEBRATING 17 YEARS OF HAPPY PATIENTS!

Photography by Bee Cave Portraits



**HIT it harder
on the hill.**

THE
STUDIO
AT
HILL COUNTRY INDOOR

Join our membership family today!

Membership Amenities
Fitness Center | Luxury Locker Rooms | Child Care
Open Court | Turf Play | Batting Cages
Facility Discounts | & More

 @HCIndoor
 @HillCountryIndoor
 512.263.4144

13875 Bee Cave Pkwy, Bee Cave, TX 78738
www.HillCountryIndoor.com

Lake Travis ISD dancers perform in annual Macy's Thanksgiving Day Parade

LAKE TRAVIS ISD Select members of the Hudson Bend Middle School Pom Squad and Lake Travis High School Red Rubies represented Lake Travis ISD in the 92nd Annual Macy's Thanksgiving Day Parade.

The dance performance opportunity was organized for award-winning individuals and teams that consisted of dancers from middle schools, high schools and studios from across the country, LTISD Director of Communications Marco

Alvarado said.

The dancers rehearsed with staff from ShowMakers of America, including Laura Truett—Hudson Bend Middle School Pom director and Cavalette assistant—to perfect their performance for NBC, Alvarado said. Along with rehearsals, the students visited New York City landmarks, attended a Broadway show and the Radio City Music Hall Christmas Spectacular, ice skated at Rockefeller Center and more.



Hudson Bend Pom Squad students Sierra Stewart, Michaela Graves, Ariel Davis and Kailey Eaves (back row) and Hayden Middlebrook, Maya Modur and Madison MacIver (front row).

COURTESY ALICIA BETH TRAMPE



Lake Travis Red Rubies students Lilian Gonzales, Phoebe Brice, Jaylynn Byrnes and Faith Flickinger.

COURTESY TRACY GRAY

EDUCATION HIGHLIGHTS

EANES ISD The district officially declared in mid-November that spring break during the 2019-20 academic year will be March 16-20. Eanes ISD was waiting on the University of Texas spring break dates to be released in order to align them, Superintendent Tom Leonard said. Spring break will not align with South by Southwest Conference & Festivals this upcoming year, which will be March 8-18 in 2019.

LAKE TRAVIS ISD Wireless network equipment upgrades and wireless switching equipment upgrades were purchased for Hudson Bend Middle School, Lake Travis Middle School and Lake Travis High School, according to documents from the Nov. 14 board of trustees meeting. In addition, wired and wireless network infrastructure equipment was purchased to equip the new Bee Cave Middle School. The total cost was about \$907,000, the documents said. Funding came from the 2018 bond program, which allocated money for the purchase of technology items.

LEANDER ISD The board of trustees unanimously approved a set of legislative priorities for the district Nov. 8. LISD's legislative agenda was created by the board of trustees' legislative committee, and it will lead district administration in drafting legislation, supporting bills that come forward and testifying on behalf of those bills, Superintendent Dan Troxell said. "There's going to be a time when one of our major efforts will be simply to have the Legislature do no harm," Troxell said. The district's priorities were categorized into three sections—safety, education and finance—and included topics such as supporting increased funding for mental health services and safety enhancements for facilities. A full list of priorities can be found online. The 86th legislative session is set to begin Jan. 8, according to the Legislative Reference Library of Texas.

Westlake High could see two new class options

EANES ISD Two new course options for Westlake High School were proposed to the board at the Nov. 27 meeting: PE for the Mind, Body, Spirit and Art II Photography.

A physical education course, PE for the Mind, Body, Spirit would be open to ninth- through 12th-graders and have no prerequisites. The course would promote lifelong wellness and physical education and is proposed based on student interest and recent trends in the field, a staff presentation to the board stated. The program cost would be \$500-\$600, and there would be no student fee. Art II Photography would be offered through the fine arts department and be open to grades 10-12. The prerequisite would be Art I.

"This course is designed for

students who are interested in further developing their skills and honing their craft in photography," the staff presentation said, adding students will develop the skills with assignments that will take them through the creative process. The major units of study will include photography projects, Photoshop, darkroom, principles of art, art appreciation and critiquing.

Art I Photojournalism is currently the only photography class offered at the school. The new program cost would be \$4,000-\$5,000, and the PTO would fund start-up costs. There would be a student fee of \$35. The item was up for discussion only, and action will be requested at the Dec. 11 board meeting.

Legislative priorities are approved by committee

EANES ISD In 2018-19, Eanes ISD residents lost nearly twice as much to recapture—\$101.7 million—than they kept—\$59.5 million—for local schools, which is why one of the 2019 legislative priorities is "rebalancing the state's responsibility to fund education with respect for taxpayers' local investment."

At the Nov. 27 meeting the board approved the district's legislative priorities: updating the basic allotment in the school funding formula, rebalancing the state's responsibility to fund education with respect for taxpayers' local investment, promoting local governance and transparency for taxpayers, and keeping the funding for public schools with public schools.

CDVantage
A higher point of view.

2.80% APY*
18 Month

CERTIFICATE OF DEPOSIT

*Annual Percentage Yield
Minimum Deposit of \$10,000.00.
Subject to early withdrawal penalty. Rates Available for limited time.

Looking for high CD rates?

We are your single CD source.
Multiple banks. One account.

- Nationally Sourced CD Inventory
- Online Purchase and Account Management
- Secure Encrypted 24/7 Access
- FDIC Insured

CDVANTAGE.COM

2300 Lohmans Spur STE 180, Lakeway, TX 78734
512-261-0035

NOW ENROLLING FOR SPRING 2019!

Performing & Visual Arts Classes (Ages 3 & up)

- Ballet
- Jazz
- Hip Hop
- Tap
- Acting for Stage
- Acting for TV/Film/ Youtube
- Voice
- Visual Arts
- Twinkle Stars
- Adult Dance and more!

TexARTS Triple Threat Program
A technique-focused curriculum for advanced musical theatre training

ANNOUNCING TEXARTS MUSICAL THEATRE CONSERVATORY

MTC is a high-level training program for high school students interested in developing their musical theatre skills.

ENROLL NOW!

2300 Lohman's Spur Suite 160, Lakeway, TX 78734
tex-arts.org | 512-852-9079 x104

Marry Poppins, Jr. Auditions Feb. 2
(Elementary School)

James & the Giant Peach, Jr. Auditions Jan. 26
(Middle & High School)



A great smile can and should be your best asset,
Let us help!

FREE CONSULT

L.A.N.A.P. LASER SURGERY

CLEAR CORRECT ORTHODONTICS

DR. ANGELA BURNS
4201 BEE CAVE RD #B210
(512) 328-0911
WWW.WLFAMILYDENTAL.COM


WESTLAKE FAMILY DENTAL
Offer expires 1/15/2019
SMILE MAKE-OVER
Six veneers for
\$4,800
(a \$7,200 value).

ATXHyperbarics_{o2}

**THE FOUNTAIN OF YOUTH IS REAL,
AND IT'S 100% OXYGEN**

- Improves recovery of illness and surgery
- Improves endurance for athletes
- Improves cognition and can reverse cognitive decline


WHAT IS HYPERBARIC OXYGEN THERAPY?


Hyperbaric Oxygen Therapy (HBOT) is the use of increased atmospheric pressure and increased pressure of oxygen as drugs to treat basic disease processes. Increased atmospheric pressure allows oxygen to dissolve and saturate more effectively throughout the body, leading to oxygen saturation levels in excess of 1000%.

This leads to exponential growth of new red blood cells, stem cells, and even brain cells. Learn how this creates desired health and increased performance among athletes, elderly, veterans, and individuals suffering from injury or illness (We treat at 1.3 ATA to 2.0 ATA).

**VISIT ATXHYPERBARICS.COM
TO LEARN MORE!**

5656 Bee Cave Rd. C-103
West Lake Hills, TX 78746
512-953-9421

 International Hyperbarics Association



Tidy up and let US de-clutter your life.

Why wait until 2019? Be a new, organized you, TODAY. You won't regret it. At Valet Storage, we provide the units, we do the heavy lifting, and we deliver your items back to you at your choosing. **Full Service Storage, designed for you.**

(877) 326-3838 | WWW.VALET.STORAGE



 **Classical Christian K-12 One Campus**

Open Campus
January 10, 2019
8:30-11:30am

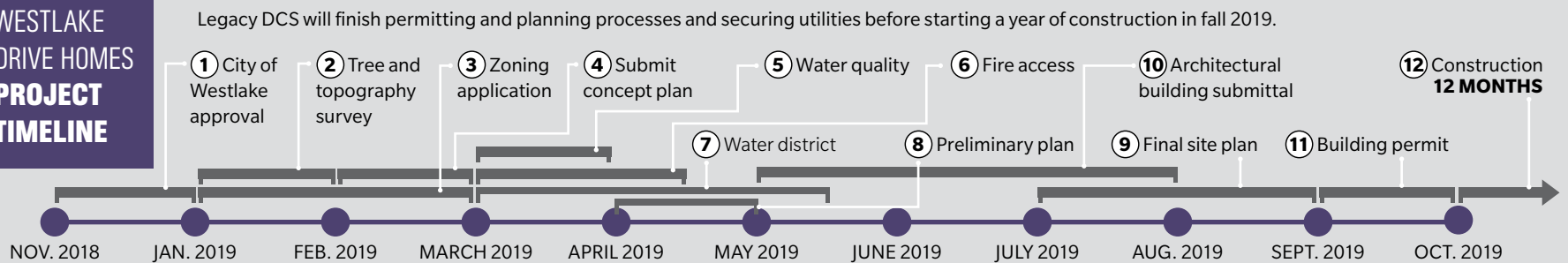
Come and go, observe classes

Students 5th-12th also welcome

3230 Travis Country Circle
Learn more at regentsaustin.org



WESTLAKE DRIVE HOMES PROJECT TIMELINE



SOURCE: LEGACY DCS/COMMUNITY IMPACT NEWSPAPER

West Lake Hills property sells to developers, five homes priced from \$1.49M to \$1.69M to be built

After consideration from city officials and public input, West Lake Hills is selling 2.46 acres of land at 110 Westlake Drive to a residential developer.

With a proposed purchase price of \$1.58 million, City Council on Nov. 14 awarded a contract to development firm Legacy DCS. According to the accepted proposal, the firm creates master planned communities throughout the state, including homes in Lakeway developments Westside Landing and Serene Hills.

The original round of proposals submitted were all rejected in February, and the process was begun anew. Council stipulated that all new proposals be for residential development only. Legacy DCS applied during the

first round of proposals as well. Of the 11 original proposals being considered, only Legacy DCS and Kendell Development Inc. submitted residential development proposals.

Legacy DCS plans to build five “handcrafted” single and two-story homes averaging 4,000 square feet.

In the proposed design the firm’s landscape architect Chris Moore positioned the homes strategically around live oak and cedar trees to maximize natural privacy for residents. A bird sanctuary under a large oak tree toward the rear of the property is also planned. The solar energy-based homes will be priced from \$1.49 million to \$1.69 million and include full landscape service year-round, the proposal states.



“We anticipate this neighborhood to attract a local empty nester in or around the Westlake area who is seeking a low-maintenance, lock and leave property,” it stated.

110 Westlake Dr. West Lake Hills



The property has commercial developments along its southern border and residential homes to the north, west, and across the street to the east.



Several members of Lake Travis Elite Soccer attend an Oct. 25 presentation of the Bee Creek Sports Complex at the Lakeway Activity Center.

\$23.5 million Bee Creek Sports Complex concept plan approved by Travis County Commissioners Court

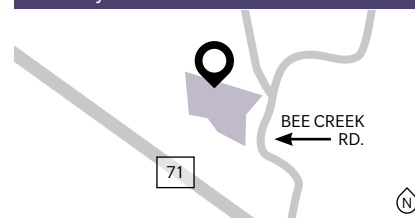
The concept plan for the Bee Creek Sports Complex in western Travis County passed with a unanimous vote by Travis County commissioners Nov. 13.

Plans for one of the county’s largest projects from the 2017 bond election include seven sports fields, batting cages, a meeting facility, a playground and trails. Voters approved \$23.5 million for the project in November 2017.

The city of Lakeway, per a January

2018 interlocal agreement, is providing a 70-acre site at 4440 Bee Creek Road to the tune of \$3.7 million approved by voters in a 2014 bond.

Bee Creek Sports Complex Lakeway



Developers for Signal Hill Estates in Bee Cave almost done with roads, homebuilding close

Signal Hill Estates, located at Cabrillo Way and Palermo Dr., is a development within Bee Cave that sits on 95 acres containing 61 lots, each of which are between 1 and 3 acres. Developer Evan Loomis bought the land in early 2018 and reported in October that roads within the development were nearly complete.

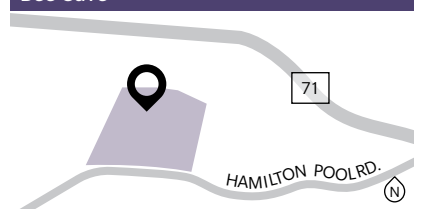
Each home within Signal Hill varies in price but averages around \$1.5 million. The development will feature homes from Eppright Homes, Ames Design Build and Sendero Homes, and will also contain a 28-acre greenbelt, a community space and gardening plots.

Loomis said one aspect of modern domestic development he wanted to avoid is the seeming trend toward dense-population communities. But he said he also wanted to focus on creating a tight-knit neighborhood.

“The question that we’re asking and answering with this development is: ‘How do we create neighborliness and community with these homes that are on big lots?’” Loomis said, adding that the answer lies in all of the amenities that will be featured in the development. “It’s the kind of development that forces you to get to know your neighbors.”

Loomis said that as soon as the roads and other infrastructure are complete, foundations for the homes will be laid.

Signal Hill Estates Bee Cave





Lakeway Mayor Sandy Cox (right) stands next to new council members Laurie Higginbotham and Louis Mastrangelo following their swearing in Nov. 19.

Mastrangelo, Higginbotham sworn into Lakeway City Council as top vote-getters from pool of five

LAKEWAY At its Nov. 19 meeting, City Council approved the results of the Nov. 6 City Council election and held a swearing-in ceremony for the two winning candidates, Louis Mastrangelo and Laurie Higginbotham.

Mastrangelo and Higginbotham both ran on a platforms that emphasized citizen engagement and also focused on remedying Lakeway's infrastructure and wildlife issues.

Higginbotham is an attorney with more than six years of experience on city commissions and 19 years of experience as a trial and appellate lawyer. Mastrangelo, a managing partner at Hire Endeavors, has also represented citizens at Lakeway City Council, commission and committee meetings. Mastrangelo and Higginbotham serve 18-month terms that expire in May 2020.

Canvassed count Final vote totals for 2018 Lakeway City Council election

Louis Mastrangelo	2,437
Laurie Higginbotham	2,232
Wendi Severance	2,226
Glenda Foreman Engert	1,918
Betty Haley	1,870

SOURCE: CITY OF LAKEWAY/COMMUNITY IMPACT NEWSPAPER

New group to benefit Bee Cave's parks and trails

BEE CAVE Bee Cave council members officially recognized a newly formed nonprofit geared toward helping the city's parks and recreation areas.

The discussion at the Nov. 27 meeting centered on a memorandum of understanding between the city and what is now called the Bee Cave Friends of Parks Foundation. Among other initiatives, the organization will seek funds toward the improvement and upkeep of Bee Cave's park and trail system.

Among the items agreed to, the city will include the nonprofit in

long-term planning and make members aware of the goals and direction of Bee Cave's parks and trails as well as share with members strategic initiatives at the beginning of each fiscal year.

Among other actions, the Friends of Parks Foundation agreed to publicly support Bee Cave and its policies, include a member of the Parks, Recreation and Facilities Department as a non-voting presence at all meetings, and engage in advocacy efforts on behalf of and under the guidance of the city.

Lakeway officials discuss improvements to some of city's internal processes following citizen complaints

LAKEWAY Following an official report against a city employee alleging improper actions as well as several complaints from Lakeway residents, Lakeway City Council has initiated steps to change its code-enforcement ordinance and internal practices.

At the Nov. 19 City Council meeting Lakeway City Manager Steve Jones said in October a code-enforcement officer, responding to a complaint, drove to a residence to perform an inspection and determined that a permit was required for construction work taking place at the home.

The homeowner later applied for and received a permit, Jones said, but also filed a police report claiming the city employee entered his home illegally while he was not present.

The Lakeway Police Department investigation, which started Oct. 26 and concluded Nov. 7, determined the code-enforcement officer did enter the residence without permission, but the resident declined to press charges.

The city employee was suspended with pay during the investigation and suspended without pay following the conclusion of the investigation, Jones said.

"It has become apparent to me that the city needs to review and revise its ordinances, policies and procedures, and training regarding its city employees and officials entering private property, and we have initiated such a process to do that," Jones said.

He added the committee involved in examining and possibly changing city policy includes himself, Assistant City Manager Julie Oakley, Police Chief Todd Radford, City Attorney Cobby Caputo and Code Enforcement Supervisor Omar Lopez.

Council Member Laurie Higginbotham, who was sworn into office that evening, said she would be happy to serve as a council liaison, as that would be beneficial to the city.

"There is enough that comes before us that warrants a pretty serious investigation, and I want to see to it that, that happens," Higginbotham said. "I think these are serious allegations. I want to make sure the investigation is thorough."

Higginbotham also encouraged residents to file police reports.

"That's the best way for them to get their case investigated," she said. "No matter how small or insignificant. Just let them know that's invited and welcome. We want that information."

Mayor Sandy Cox said she would like to take a deeper look at what calls for a permit, and cited examples of work done on private residences that seem too trivial to necessitate official city paperwork.

Jones said moving forward the committee will work on amendments to the city's ordinances and changes to its building code and other policies and procedures. He also said Higginbotham and possibly one other council member will be added to the committee.

"I THINK WE NEED TO MAKE SOME CHANGES TO THE CODE, AND I'D LIKE TO HELP DO THAT."

— LAURIE HIGGINBOTHAM, LAKEWAY CITY COUNCIL MEMBER

Michael Dyson sworn in as new Rollingwood mayor

ROLLINGWOOD Despite a 10-minute delay, Mayor Michael Dyson's swearing-in ceremony Nov. 28 eventually saw the former alderman take office.

Since Dyson's term technically runs for another year, the council voted to fill his vacant seat with Buck Shapiro.

Following that vote, presiding judge Robby Chapman swore in alderwomen Sara Hutson and Amy Patillo and Alderman Gavin Massingill, but proceedings paused once it came time to swear in Dyson. Council realized

Shapiro was not present at the meeting.

Outgoing Mayor Roxanne McKee said Dyson could not assume two positions at once, so proceedings paused until Shapiro arrived at Rollingwood City Hall from Houston.

Shapiro arrived at City Hall about 10 minutes later and was sworn in, followed directly by Dyson.

Massingill was appointed mayor pro tem, and Chapman was reappointed presiding judge of Rollingwood.

Harbor View Road could undergo widening, see other improvements

WEST LAKE HILLS Harbor View Road could receive several improvements in the future after West Lake Hills City Council on Nov. 28 added it to a list of projects for a possible 2019 bond.

Though Harbor View has been on the city's drainage master plan, the update adds pavement and safety improvements, including expanding the road.

Water District 10 plans to put a new water line along Harbor View, Mayor Linda Anthony said. She said there is no need to have the street torn up once by Water District 10 and again by the city at a later time—it made the most sense to align the projects and do everything at once.

"The [Water District 10 portion of the] project was slated for next spring, but they were amenable to pushing it back," Anthony said. "We have done cost-sharing with them in the past."

Anthony said she plans to meet with



K. Frieze & Associates engineer Vicki Ortega presents a proposal Nov. 28 to City Council.

Water District 10 representatives about next steps.

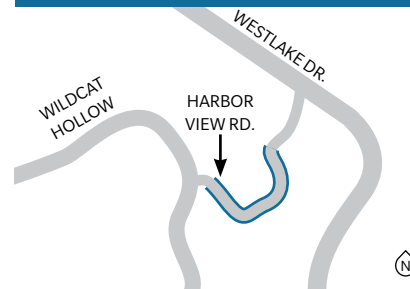
At its narrowest Harbor View is 13 feet wide, K. Frieze & Associates engineer Vicki Ortega said to council members. Most Texas Department of Transportation roads are between 11 and 14 feet, Ortega added.

"Harbor View really is a one-lane road," she said. "And there are not a lot of places to pull off [in an emergency]."

By putting the drainage system underground, about 6 feet of additional pavement can be added to the road, Ortega said.

The estimated total construction time would be about three months, Ortega said.

Harbor View Road West Lake Hills



CITY HIGHLIGHTS

BEE CAVE Following discussion at its Nov. 27 City Council meeting, Bee Cave officials agreed to have city staff pursue amendments to its current sign code regarding size and other considerations.

ROLLINGWOOD At its Nov. 28 regular meeting, Rollingwood City Council recognized the service of outgoing Mayor Roxanne McKee, who was sworn in Nov. 16, 2016. Mayor Michael Dyson was sworn in Nov. 28.

LAKEWAY As of Nov. 19 the new Lakeway Police Department building was 219 days into construction and 79 percent complete, according to a representative from SpawGlass, one of the building's contractors.

WEST LAKE HILLS City Council on Nov. 28 approved policy changes to the city's new, more comprehensive ethics ordinance draft. Following the past several months of discussion, the draft will next go to City Attorney Alan Bojorquez for further review. City Council will vote on approving the ordinance at the Dec. 12 meeting.

NOW OPEN

FULL SERVICE BANK

texasregionalbank.com

512-291-3398 | 1213 Ranch Rd 620 S

EQUAL HOUSING LENDER

MEMBER FDIC

Come Home to RELATIONSHIP BANKING IN LAKEWAY



David DeStefano
Market President
NMLS# 558862



Jason Hendrix
Loan Officer
NMLS# 1000979



Matt Schepper
Mortgage Loan Officer
NMLS# 177669



Tom Clemmons
Mortgage Services
NMLS# 209059



TEXAS REGIONAL BANK

Texas Regional Bank Mortgage, NMLS Number 804865. All loans subject to approval, including credit approval. Some restrictions may apply. Texas Regional Bank Mortgage may change the products, services, and any other information described at any time. Texas Regional Bank Mortgage does business as TRBMortgage in the state of Texas.

HOLIDAY
Wine Sale
MIX & MATCH — NOV 12-DEC 31

20% OFF
6 OR MORE
BOTTLES OF WINE*

COUNT ON TWIN TO BE
Your Personal Shopper™
THIS SEASON WITH GIFT IDEAS, PARTY PLANNING ADVICE,
PAIRING SUGGESTIONS, ONLINE ORDERING,
DELIVERY AND MORE!

TWIN LIQUORS
FINE WINE & SPIRITS

Ask About Complimentary Bag & Bow Gift Wrap!

LOCATIONS, RECIPES & EVENT INFO AT TWINLIQUORS.COM

*Holiday Wine Sale runs 11/12-12/31/18. Discount off regular priced 750ml bottles of wine. Excludes Twin Deals, Bargain Barrels, Ends in "2" pricing, Final Few, online orders and sale items. Some exclusions apply. Please drink responsibly.

School financing tops state wish list

Learn other top priorities for upcoming legislative session

The 86th Legislature will begin in 2019 with a familiar set of particularly gnarly issues: public school finance, property taxes and a tight state budget, to name a few.

And the 150 state representatives and 31 senators working on those problems will be working in a new political atmosphere, with Democratic gains in both the House and Senate—which remain, nevertheless, in Republican control—and a new speaker in charge in the House.

Shortly after November's elections state Rep. Dennis Bonnen, R-Angleton, announced he had commitments from 109 House members—far more than the required 76—to succeed outgoing House Speaker Joe Straus, R-San Antonio. The actual vote will not take place until the first day of the legislative session, on Jan. 8, but Bonnen's announcement cleared the field of other candidates.

That introduces a new player into what has sometimes been a contentious Texas Capitol, where relations between the House and Senate have been strained for the last couple of sessions. Lt. Gov. Dan Patrick, the presiding officer in the Senate, will be back, as will Gov. Greg Abbott. Bonnen will complete that leadership set.

Texas Comptroller Glenn Hegar announced in July that the state's tax revenues were running higher than expected, meaning legislators will start with about \$2.8 billion more

than they expected. That still leaves them short of what they would need to continue the state's current programs and also account for inflation and population growth, but it is a marked improvement over what they expected.

Two items stand out from a list of things adding pressure for new state spending: school finance and Hurricane Harvey.

State leaders have tried for several legislative sessions to rebalance the school finance system, which relies heavily on local property taxes, to an extent that has made property tax relief an important issue for officeholders across party lines.

To lower pressure on those local taxes, legislators would have to cut overall spending on public schools, increase state spending to offset local cuts or both. The situation is both expensive and politically treacherous, making the issue a hard and persistent problem for Texas lawmakers.

Further complicating the issue, Chapter 41 of the Texas Education Code—more commonly referred to as the “Robin Hood plan”—is also a major topic of discussion for legislators. Property-wealthy districts affected by this provision are required to share their wealth with other less-wealthy school districts, according to the Texas Education Agency. For example, more than \$628 million will be sent to the state and redistributed

TEXAS COMPTROLLER GLENN HEGAR ANNOUNCED IN JULY A \$2.8 BILLION TAX REVENUE SURPLUS, A MARKED IMPROVEMENT OVER WHAT WAS EXPECTED.

from Austin ISD in 2019.

The recovery from Hurricane Harvey is also expensive, but unlike school finance, it is a one-time expense. If lawmakers choose to do so, some or all of the money needed can likely be found in the state's Economic Stabilization Fund, better known as the Rainy Day Fund. They will also be relying on the federal government for the brunt of the recovery money needed because of that 2017 storm.

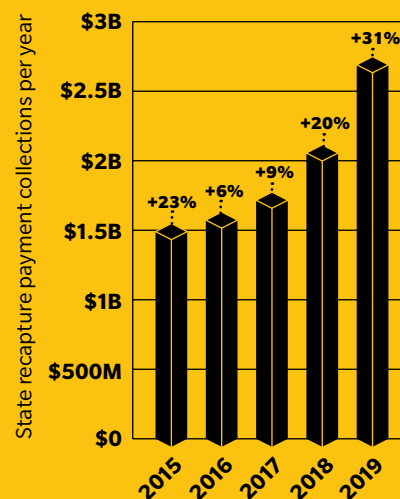
Lawmakers also will talk about property taxes outside school finance—those levied by local governments and special districts—and how much those taxes can rise before local voters have a say. Legislative limits failed to pass in 2017, but supporters have promised another attempt.

Lawmakers will consider a wide range of other ideas, like new gun laws in the wake of school and church shootings, getting rid of daylight saving time, slowing the growth of state college tuition, marijuana legalization and prison reform.

If previous sessions are any indication, more than 6,000 proposed bills could come before lawmakers to be considered before the end of the 140-day session. Only a fraction will pass; in 2017, 1,211 out of 6,631 bills passed, according to the Legislative Reference Library.

ROBIN THE RICH

The chart below shows what Texas school districts paid in recapture, or “Robin Hood” money, which is redistributed from wealthy to poor districts.



2019 RECAPTURE TOTALS BY SCHOOL DISTRICT

School district	Recapture total
Austin ISD	\$628,170,176
Houston ISD	\$294,819,181
Plano ISD	\$209,401,299
Eanes ISD	\$102,225,637
Spring Branch ISD	\$97,671,443
Midland ISD	\$61,487,158
Grapevine-Colleyville	\$54,225,111
Lake Travis ISD	\$49,819,009
Coppell ISD	\$45,012,181
Alamo Heights ISD	\$42,403,963

SOURCE: TEXAS EDUCATION AGENCY/
COMMUNITY IMPACT NEWSPAPER

EYELID SURGERY BY EYELID SPECIALISTS

- Blepharoplasty
- Brow Lift
- Eyelid Ptosis

CTOC
EYE AND FACE
(512) 458-2141



MAUDIE'S
TEX-MEX

LET IT QUESO



SEASONS GREETINGS AUSTIN, MAY YOUR QUESO BE WARM AND BRIGHT!

@MaudiesTXMex f Maudie's TEX-MEX WWW.MAUDIES.COM

Pink Lady Lash

Eyelash artists create healthy extensions, lifts

When a Pink Lady Lash client opens her eyes and sees her new eyelashes in the mirror, her face lights up and there is an instant confidence boost, Owner Shelby Tarleton said.

This is one of Tarleton's favorite aspects of the business she started in Westlake's Davenport Village shopping center in 2016 after realizing she has a knack for lash artistry.

"I've always been detail oriented," Tarleton said. "Throughout college I was doing a lot of bridal makeup, and I realized I loved the industry and wanted to go to beauty school."

Tarleton particularly enjoyed training in lash enhancements, and once in beauty school she started focusing on that and never stopped, she said.

Pink Lady Lash offers both extensions and lash lifts. A lash lift is administered to natural lashes and is similar to getting hair permed. The formula is safe for eyes and keeps lashes in an upright position for about six to eight weeks. An extension consists of synthetic hair applied to each individual eyelash.

"Instead of using mascara, which

clumps lashes together, we are accentuating every single eyelash," she said, adding that a common misconception is that lash extensions are damaging, but when applied correctly they will continue to grow and stay healthy.

After quickly filling her schedule with clients, Tarleton began searching for a permanent shop and opened the Westlake location about a year after entering the industry. Last June she opened a second Pink Lady Lash in Cedar Park.

While opening one or two more locations in the future is a possibility, Tarleton said the team is focusing on starting its own line of lash products for distribution to other salons. Beyond expanding her brand, either through brick-and-mortar establishments or augmenting her product line, Tarleton said the staff turnover rate at Pink Lady Lash is low, a fact she attributes to the personal relationships her company fosters with clients.

"We have a really good culture here," she said. "It's a positive environment."



PHOTOS BY SALLY GRACE HOLTGRIEVE/COMMUNITY IMPACT NEWSPAPER

150-200 eyelashes
on the top lid of the human eye

2-3 weeks
in between touch-ups for lash extensions

1-5 lashes
shed each day between both eyes

1
2017 and 2018
'Best lash studio' in the Austin area



1: Shelby Tarleton sits at the front desk of Pink Lady Lash in Westlake, one of the company's two locations. Tarleton started the business in 2016. **2:** Eyelash extension lengths are customized for every lid—if the lashes are too long and heavy it can be damaging, Tarleton said. **3:** Lash artist Kathleen Ascuitto works on a client. **4:** According to Tarleton, getting one's lashes worked on is a great time to relax and enjoy self-care, and the business has numerous regular customers.

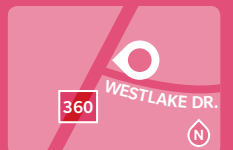
Pink Lady Lash

3801 N. Capital of Texas Hwy Ste. C160, Austin

512-368-5458

www.pinkladylash.com

Hours: Mon.-Fri. 10 a.m.-7 p.m. Sat. 10 a.m.-5 p.m. Closed Sun.



FOR ALL THE WAYS YOU PLAY!

Whole Earth
PROVISION CO.
WholeEarthProvision.com

\$40 OFF
YOUR NEXT CUSTOM FRAME PURCHASE

EXPIRES January 16, 2019

Located in The Village of Westlake Shopping Center between HEB and Office Depot

701 So. Capital of TX HWY #D-460
Austin, TX 78746
512-306-0999 | FastFrameAustin.com



DINING FEATURE

Elle's Cafe & Coffee is attached to Alive + Well, a wellness center offering holistic approaches to health needs.

Elle's Cafe & Coffee

Bee Cave gathering place serves up healthy, gluten-free options

BY SALLY GRACE HOLTGRIEVE

Healthy and delicious can be synonymous—at least at Elle's Cafe & Coffee, according to owner Adam Metcalf.

"We wanted a cafe that not only served good, healthy food and great quality coffee, but that was also a place for people to gather," Metcalf said.

Elle's Cafe is named for Metcalf's oldest daughter. It opened this April as part of Alive + Well, the Bee Cave wellness center that offers an apothecary, yoga, meditation, massage, acupuncture, a float tank and more. According to Metcalf, it is the wellness center that helps inform Elle's overarching themes.

Metcalf is a second-generation pharmacist and said the wellness component of medicine always resonated with him. He owned Hill Country Apothecary in Lakeway for about five years and said lifestyle change was the topic that came up the most among his customers.

"So we thought we could have the most impact doing more with that," he said. "We wanted to offer

[healthy food choices] as part of the center."

The cafe is completely gluten-free, an aspect of Elle's inspired by Metcalf's wife, who has celiac disease. Whenever they would dine out at other establishments she would often have health issues despite choosing the gluten-free menu options.

"If there is gluten in the kitchen it can be cross-contaminating," he said. "So we wanted to offer a place where people could have truly healthy food."

Metcalf described the cafe as laid-back and open and said special attention was paid to the ambiance.

"Aesthetic matters," he said. "There are a lot of windows, and good sunlight comes through. We play good music, and when we have good weather we open up the glass doors. Everybody seems to be happy when they're here."



HEALTHY TREATS AND DRINKS

Pastries made at Elle's Cafe & Coffee are all gluten-free and made in-house. Options include muffins, danishes, pumpkin bread and more, and the cafe caters.



Sweet potato hash is on Elle's Cafe breakfast menu.



The pecan peach danishes are gluten-free.



Shown are a matcha latte and pumpkin spiced latte.

Elle's Cafe & Coffee

3944 S. RR 620, Bldg. 6, Ste. 101, Bee Cave

512-599-4009

www.aliveandwell.com/elles-cafe

Hours: Mon.-Sat.
8 a.m.-6 p.m., Sun.
10 a.m.-2 p.m.



POSH FLOORS

WOOD | TILE | CARPET | LUXURY VINYL | COUNTERTOPS

15500 W. HWY 71 STE. 330 BEE CAVE, TX 78738
512.551.8323 | WWW.POSH-FLOORS.COM

Daily Christmas Specials!
We have gifts for all your holiday needs!

Point of ORIGIN

2300 LOHMANS SPUR #100 . LAKEWAY
512.263.4301



PHOTOS COURTESY DEIDRA HARVEY

1

FIRST LOOK

BY ALBERT ALVARADO

Poppy's Southern Recipes

Southern flavors sing at Lake Travis-area eatery

For Deidra Harvey, the recipe for a good restaurant is simple: Bring one part good service to a simmer, add in great flavors from Louisiana and southeast Texas, and garnish with some creative drink options and desserts. According to Harvey, that is Poppy's Southern Recipes.

"Our biggest goal in owning the restaurant was to make it feel like family," the Poppy's co-owner said.

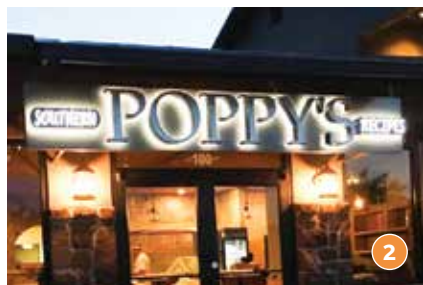
The restaurant opened Oct. 1 and has since expanded from five employees to 25.

Harvey and her husband, Mark, run the restaurant full-time along with her parents and Poppy's co-owners

Dan and Alice Gonzales. In fact, the restaurant's name is an homage to Dan, who is called Poppy by his 13 grandchildren.

The owners are originally from Beaumont, Texas, and had vacationed in Austin for years before deciding to move to the area in 2014. The family missed the taste of home, and eventually the idea of opening Poppy's came to fruition.

"We were looking for catfish baskets, shrimp baskets, po'boys, and we would always have to drive a distance to find those things when we moved, and we started missing that kind of food," Harvey said.



2

1: Poppy's Gumbo is one of the restaurant's staple dishes. 2: Poppy's Southern Recipes opened Oct. 1.

Poppy's Southern Recipes

4300 N Quinlan Park Rd. Ste. 100

512-992-0999

www.poppysouthernrecipes.com

Hours:

Mon. 11 a.m.-9 p.m.

Wed-Sun 11 a.m.-9 p.m.

Closed Tues.



POPULAR COCKTAILS

Watermelon Slushie

Frozen watermelon served with a choice of vodka

Bloody Mary

Served with a skewer that includes a slider, fried shrimp, an olive, a pickle, a deviled egg and celery



HOLIDAYS MAKE THE HAPPIEST DAYS.

Wishing your family a warm holiday season!
Would you like to join our family?
Please call one of our
locations, and we would love
to schedule a tour!

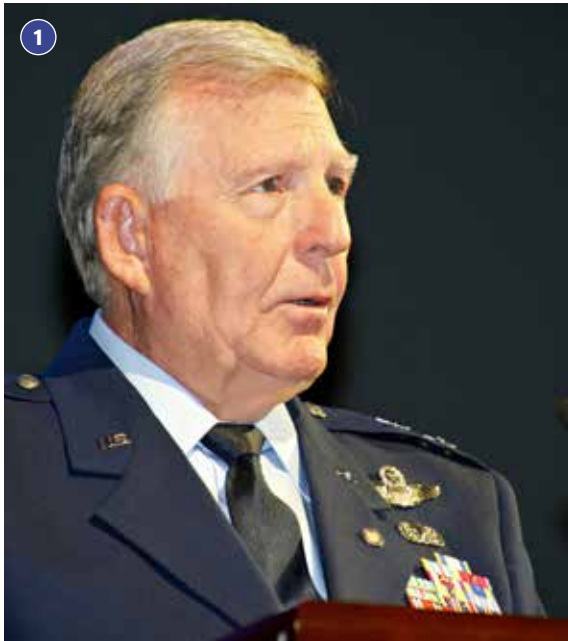


Primrose School of Bee Cave
512-263-0388
www.primrosebeecave.com

Primrose School of Lakeway
512-960-5245
www.primroselakeway.com

Primrose School of West Lake Hills
512-689-8839
www.primrosewestlakehills.com

Veterans Day in Lakeway



The 2018 Veterans Day program took place Sunday, Nov. 11, at Lake Travis High School. The program included the Lakeway Police Department Color Guard, Lake Travis High School Choir and Lake Travis High School Brass Quintet.

- 1 Retired Air Force Maj. Gen. Rod Kelly led the program with opening remarks.
- 2 Members of the Lakeway Police Department Color Guard parade the colors.

'Blast from the Past' car show

Belmont Village Senior Living-West Lake Hills recently hosted a "Blast from the Past" car parade and exhibit, giving its residents and local community members the chance to take a trip down memory lane and travel back in time. The event drew more than 70 attendees. Pictured are 1 Ann and Tim Lowry and 2 Patricia and Rob Routh.



Mobile nursing van visits Lake Travis Crisis Ministries

Nursing students from Concordia University took their mobile outreach van and visited Lake Travis Crisis Ministries on Nov. 14. The students provided wellness checks for people in need of health care. With the mobile outreach van, students can also provide basic one-time bandage changes.

- 1 Senior nursing student Kristen Cowings listens to a client of Lake Travis Crisis Ministries discuss his medical issue.
- 2 Concordia nursing students prepare to start health screenings at the Lake Travis Crisis Ministries.
- 3 Ellen Fontana, Concordia adjunct nursing faculty member, shows off Concordia's new mobile outreach van.



Woman's Club of Greater Lakeway event

Women's Club of Greater Lakeway held its fall kickoff event, "Waltz Across Texas," on Oct. 14. Attendees danced to the music of the Lohman's Crossing Band. More than 150 people attended the event and danced the night away.

Score Austin

Local association mentors area small businesses

Score Austin is a nonprofit association dedicated to helping entrepreneurs and small businesses either start or grow a business. The organization has been around since 1964 and was founded as a resource partner of the Small Business Administration. Today Score boasts more than 320 chapters and 10,000 volunteers nationwide.

Charlyn Daugherty is in charge of recruiting new members for the Score Austin chapter. The main office is in West Lake Hills, but Daugherty said SCORE covers small businesses in Austin and all of its surrounding communities.

Daugherty describes SCORE as an organization that provides clients with mentors, typically with many years of experience in all elements of running a business. That includes operations, strategy, technology and marketing.

One of SCORE's most recent successes is Austin-based Antonelli's Cheese Shop.

Daugherty said that is a great example of who Score represents.

"In Austin there are a lot of young people moving

here all the time, so many of them are perhaps interested in starting their own business," Daugherty said. "So I think there is a greater need here than there might be in some other cities around the United States."

Another critical aspect of what SCORE does involves workshops centered on the different elements of running a business, from digital

marketing made easy to writing a successful business plan.

"Most of them, they're either free or they're very low-cost; around \$25," she said. "So, it's not just a matter of mentoring one-on-one. It's also lots of education."

Even though SCORE serves a needed function and clients are benefiting from the organization, Daugherty said there are pitfalls to being in a thriving business environment. One of the biggest problems Daugherty said she is facing lately is finding enough mentors to serve her clients.

On top of having extensive business experience, Daugherty said, a qualified mentor is a good listener, offers positive suggestions to clients and has an open mind. A good mentor should be able to facilitate positive outcomes for clients and ultimately help set them on the path toward success.

"We really need mentors in Round Rock, Georgetown, Kyle and Buda.

All of these areas are part of our district," she said, adding that the need for mentors extends beyond the cities she mentioned.

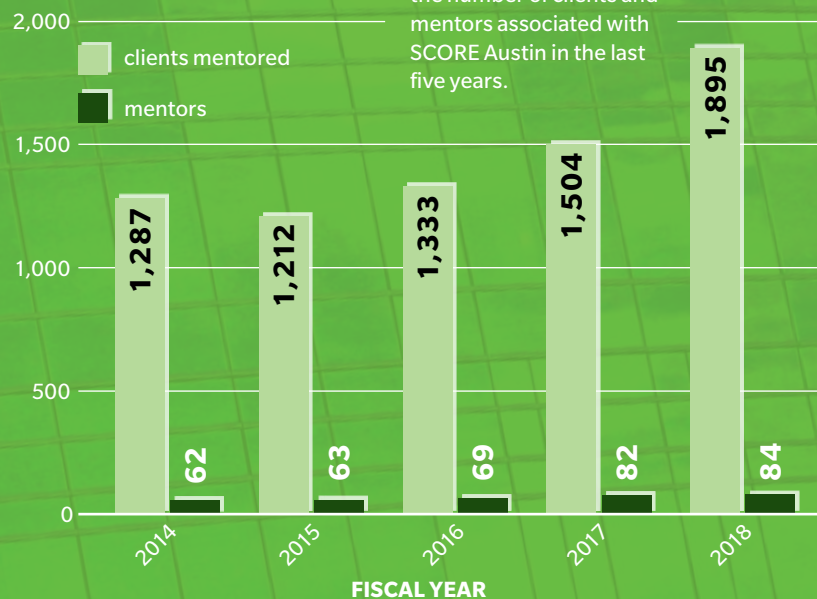
Another benefit to having mentors based all over the Greater Austin area is that satellite meeting locations can be implemented so clients living far from the West Lake Hills office will not have to drive long distances for a meeting. One example of a satellite meeting place Daugherty mentioned is at the Round Rock Public Library, with which SCORE has an arrangement. The more



Head of recruiting for Score Austin Charlyn Daugherty said that the Austin region is a prime area for new businesses.

Mentor program

The following data show the number of clients and mentors associated with SCORE Austin in the last five years.



SOURCE: SCORE AUSTIN/COMMUNITY IMPACT NEWSPAPER

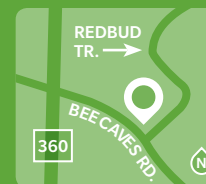
mentors Score tallies in outlying areas, the more meeting arrangements Score can make similar to the one it has with the Round Rock Public Library.

"I usually find that it is important to help the client set a plan," she said. "They usually don't have the specifics of a plan, and many of them need to have you help them be more accountable. ... What do you need to do to get to where you want to go?"

SCORE Austin

5524 Bee Caves Road, Bldg. M, Austin

For more information, to request a meeting or to find a satellite location visit austin.score.org or call 512-928-2425.



AUSTIN REGIONAL CLINIC

love is good for your health

Wishing you love, joy & good health this holiday season.

austinregionalclinic.com

give love
this holiday season

- ☒ Surprise someone you love with a handmade gift
- ☒ Give a sincere compliment
- ☒ Take care of specific chores for the person who normally does it
- ☒ Give a hug
- ☒ Put away the distracting devices; listen with purpose and be present

13 WAYS TO GIVE BACK

IN THE LAKE TRAVIS & WESTLAKE AREA

COMPILED BY **SALLY GRACE HOLTGRIEVE** • DESIGNED BY **TESSA HOEFLE**

Help better the community in a variety of ways this holiday season and year-round at one of these local organizations. From helping families in need to caring for animals, this guide includes several volunteer opportunities. This list is noncomprehensive.

ANIMALS

1 Happy Hooves Healing Hearts

Rescue and Animal Sanctuary is located in Hudson Bend. The 501(c)(3) works with local school groups and organizations for educational purposes and programs that support children with autism, PTSD and disabilities. Its mission is to spread goodwill by incorporating animal therapy with children and supporting kids and animals locally and globally.

Volunteer requirements: signing a volunteer form and waiver; the organization will be looking for volunteers to come out and help after the holidays

15603 Checotah Drive, Austin

512-814-0193

www.happyhooveshealinghearts.org

2 Hill Country Conservancy

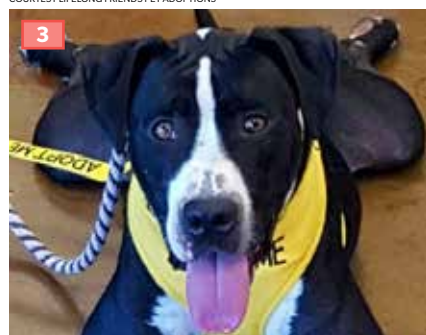
is a nonprofit dedicated to preserving natural areas such as rivers and scenic vistas as well as working farms and ranches in the Texas Hill Country. Volunteer opportunities are available at various events throughout the year.

Volunteer requirements: none

5524 Bee Caves Road, Ste. G4, West Lake Hills

512-328-2481

COURTESY LIFELONG FRIENDS PET ADOPTIONS



www.hillcountryconservancy.org

3 Lifelong Friends Pet Adoptions

is a no-kill, privately run shelter located in Lago Vista. Dogs and cats looking for forever homes are housed at the shelter. Volunteers are needed to assist with dog and cat caretaking, fundraising, adoption counseling and off-site events.

Volunteer requirements: age 18 and over; passion for animals

20803 FM 1431, Lago Vista

512-267-6876

www.lifelongfriends.org

4 RED Arena

is a 501(c)(3) with a mission of empowerment through horses. RED Arena serves children and adults with disabilities through physical, occupational or speech therapy sessions while on horseback, therapeutic riding

COURTESY LEANDER EDUCATION EXCELLENCE FOUNDATION



COURTESY PARTNERS IN HOPE



COURTESY RED ARENA



lessons, job training programs, mental health services and a free 'RED-Y to Read' program.

Volunteer requirements: volunteer opportunities are available for anyone who is interested; no previous experience with horses or disabilities is necessary; must be at least 14 years old (volunteers age 14 and younger must volunteer with a parent or guardian)

1601 Bell Springs Road, Dripping Springs

512-807-6505

www.redarena.org

EDUCATION

5 Eanes Education Foundation's

mission is to seek financial support for Eanes ISD within the community to sustain districtwide programs and help fund teacher and staff positions. Donations and volunteer opportunities are available throughout the year.

Volunteer requirements: none

601 Camp Craft Road, Austin

512-732-9065

www.eaneseducationfoundation.org

6 Lake Travis Education Foundation

volunteers and donors provide financial resources to support Lake Travis ISD programs and initiatives.

Volunteer requirements: none

3322 S. RM 620, Austin

512-533-5968

www.ltedfund.org

7 Lake Travis Youth Association,

an all-volunteer organization, provides athletic programs to children in Bee Cave, Lakeway, Spicewood and surrounding areas. The program offers children grades K-6 the opportunity to participate in sports regardless of ability, disability, skill level or financial need. Volunteer opportunities include coaching, serving as a referee or an umpire for organized games, and administrative roles.

Volunteer requirements: background check; obtaining a Positive Coaching Alliance certification through an online program; completing a concussion training course; reading and signing the organization's abuse policy

2101 Lakeway Blvd., Ste. 115, Lakeway

512-261-1900

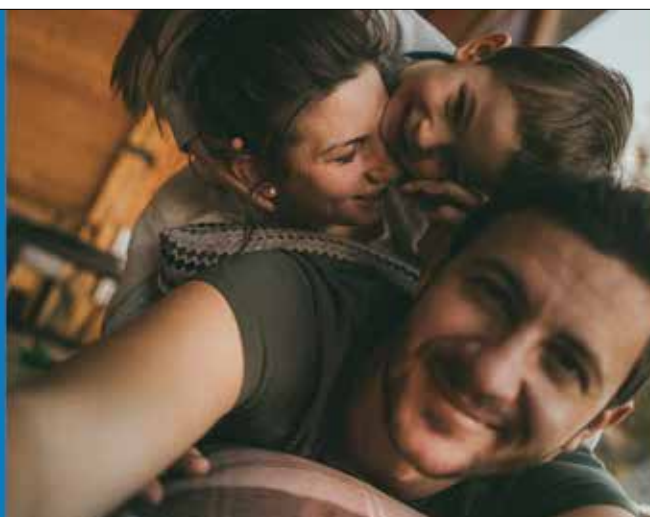
www.ltya.org

8 Leander Education Excellence

Foundation funds innovative teaching projects and professional development opportunities. LEEF needs dedicated individuals interested in serving the community as board members or volunteers in any of the program initiative

It's the season for
**FAMILY
TIME**
NOT Down time.

VisitCompleteCare.com



**VIK
COMPLETE
CARE**

The ER with a heart

Lakeway 24hr ER + Urgent Care
1518 Ranch Road 620 S, Bldg H, Ste 100
512-524-2290

Westlake
6836 Bee Cave Rd #111
512-387-3800



areas.
Volunteer requirements: none, though on-campus volunteers need to register as LISD volunteers
Physical: 204 W. South St., Leander
Mailing: P.O. Box 218, Leander
 512-570-0027. www.leeftx.org

NEIGHBORS IN NEED

9 Ladies of Charity Lake Travis Thrift Shop, part of the Saint Vincent de Paul charities, sells donated clothing, housewares, linens, toys, jewelry, furniture, antiques and one-of-a-kind finds. Volunteers are needed to work in the store, where profits support charities in the Lake Travis area.
Volunteer requirements: 18 and up unless accompanied by an adult
 1508 S. RM 620, Ste. 105, Lakeway
 512-263-0314
www.laketravisthrift.com

10 Lake Travis Crisis Ministries is an ecumenical organization aimed at helping individuals in need by providing food, financial aid and other forms of support. The volunteer organization services those within the boundaries of Lake Travis ISD. The ministry meets Wednesdays from

5:30-7:30 p.m. and Thursdays from 10 a.m.-noon. Nonperishable food donations are also accepted.
Volunteer requirements: none; regulars, drop-ins and students looking to obtain service hours are welcome
 107 S. RM 620, Ste. 114, Lakeway
 512-266-9810
www.ltcrisisministries.org

11 Mobile Loaves & Fishes is a social outreach ministry for the homeless and indigent working poor. Its mission is to provide food, clothing and dignity to those in need and accomplishes this mission by delivering food each night of the week. Volunteers at the St. John Neumann Commissary can help organize, prepare and deliver meals. Opportunities at the Community First Village may include gardening, prepping micro homes, working in the Art House and more.
Volunteer requirements: vary depending on role
 9301 Hog Eye Road, Austin
 512-328-7299
www.mlf.org/volunteer

12 Partners in Hope is a Lake Travis ministry that connects people who desire physical, emotional and spiritual assistance with people who can help. Unlike ministries


that organize a crisis response to a housing emergency, Partners in Hope helps families by working to improve living conditions, walking through a season of life, and empowering them to transform over time.
Volunteer requirements: all volunteers watch a training video series; sign a release and waiver
 15104 N. Flamingo Drive, Austin
 512-751-5877
www.partnersinhopelaketraavis.org

PUBLIC SAFETY

13 Colin's Hope raises water safety awareness to reduce drowning deaths through educational outreach. The nonprofit organization was formed in 2008 after 4-year-old Colin Holst drowned in a public pool. Year-round volunteer opportunities at fundraisers and events are available.
Volunteer requirements: none; organization works with families, young people, schools and universities and anyone who wants to donate time and talent
 3267 Bee Caves Road, Austin
 512-222-7591
www.colinshope.org

UPCOMING EVENTS

- 5 Eanes Education Foundation annual gala**
 Feb. 23
 JW Marriott Austin
 Contact the foundation for volunteer opportunities
- 6 Lake Travis Education Foundation 2019 Black & Red Ball**
 March 2
 JW Marriott, Austin
- 8 Leander Educational Excellence Foundation annual gala**
 Jan. 26
 Hilton Austin
 Committee members and day-of assistance needed
- 4 RED Arena Round-Up—annual childrens' horse show and fundraiser**
 May 3, 4
 Dripping Springs Ranch Park
 Volunteers are needed to help with setup, day-of activities and clean-up

 Tell us what you think.
 Comment at communityimpact.com.

SIGNAL HILL ESTATES

GATED COMMUNITY WITH CUSTOM HOMES

1 ACRE LOT SITES | PRICES 1.3MILL - 1.6MILL+





AMES

DEVELOP | DESIGN | BUILD

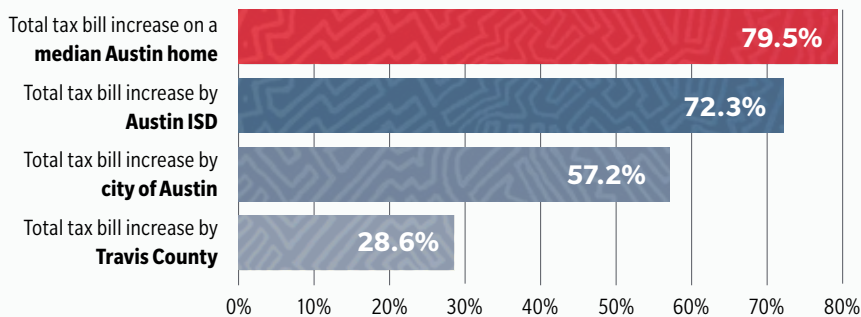
JOHNNY@OUTLAWREALTY.COM
 WWW.AMESDESIGNBUILD.COM
 512-791-4404

STATE'S EVIDENCE



GROWING AND GROWING

The following graphic depicts the percent increase of three major taxing entities in Travis County as well as the percent increase of a total tax bill on a median value Austin home from 2014-18.



CONTINUED FROM 1

percent limit on [tax] revenue, and if that's the case it could be devastating," Jones said, adding while it is difficult to predict where the state Legislature will fall on Abbott's proposal, city governments should take it seriously.

The city of Lakeway is not the only local government body making budgetary considerations in the wake of a recently ramped-up tax cap proposal from Abbott. Throughout the Lake Travis-Westlake area city officials have had to address potential drops in revenue and act or consider action, be it through increasing savings or increasing base tax rates.

ADVOCATING FOR CITIES

Abbott's most recent iteration of property tax reform policy establishes a property tax revenue growth cap of 2.5 percent per year. As the law stands now cities can adjust ad valorem tax rates that raise revenue up to 8 percent from the previous year.

Abbott's proposal contains an

and New Jersey as examples of successful property tax reform.

But on the whole many city officials in Texas and statewide city advocate groups such as the Texas Municipal League decry Abbott's proposal as unnecessarily crippling.

According to its website the TML has more than 16,000 members consisting of mayors, council members, city managers, city attorneys and city department heads spread throughout more than 1,150 Texas cities. TML Executive Director Bennett Sandlin said it is important for groups such as his to advocate against proposed state laws that diminish city revenue streams.

"Of all the city concerns we work on behalf of our members for, this is probably the No. 1 issue," Sandlin said.

Sandlin said the 2.5 percent cap is even more worrisome for city coffers than the previously proposed 4 percent cap for large cities in Senate Bill 2 that made the rounds but ultimately did not pass in the 2017 state Legislature.

"OF ALL THE CITY CONCERNS WE WORK ON BEHALF OF OUR MEMBERS FOR, THIS IS PROBABLY THE NO. 1 ISSUE."

— BENNETT SANDLIN, TEXAS MUNICIPAL LEAGUE EXECUTIVE DIRECTOR

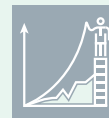
exemption for new growth, which includes developments or improvements to existing property, exempt property returning to the rolls and new construction. Some exceptions to the cap are also factored into the proposal, such as compensation for emergency workers, law-enforcement officers and teachers.

There is precedent for this kind of policy, and Abbott's proposal cites two caps implemented in Massachusetts

Citing one of TML's clients, Sandlin said the city of Rockport had a third of its property tax base wiped out by Hurricane Harvey. Abbott's proposed cap would have been very destructive for Rockport in the wake of that disaster, he said.

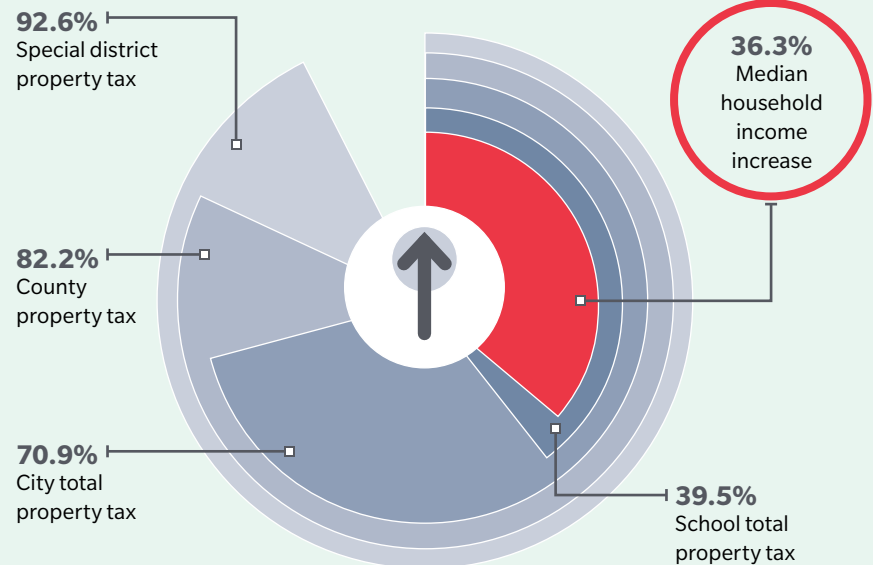
DEALING WITH THE CAP

For 2018-19, West Lake Hills City Council ended up raising the city's tax rate 7.9 percent. One of the main



RIISING FAST, RISING SLOW

The percentage increase statewide in total property tax levies from 2005-15 are compared against median household income growth for the same period.



HARE AND THE TORTOISE

200%

150%

100%

50%

0%

185.4%

Increase in estimated average taxable value of single-family homes

The percent growth in value statewide of single-family homes from 1998-2016 is compared against the increase in median household income over the same time period.

62.5%

Increase in median household income statewide

SOURCE: OCT. 29, 2018 PROPERTY TAX REFORM PROPOSAL FROM OFFICE OF GOV. ABBOTT/COMMUNITY IMPACT NEWSPAPER

reasons for this is the looming threat of the cap, City Administrator Robert Wood said. He explained that compared with larger cities the West Lake Hills tax rate is low enough that a 2.5 percent cap could force some difficult decisions from City Council.

"[City Council] raised the tax rate about as much as they could... because they felt like they needed to prepare for the future because of this possibility of the rollback rate being dropped from 8 percent to 2.5 percent," Wood said. "What you'll see is City Council kept [the tax rate] pretty steady, and they've pretty much kept the same number except for the last couple of years, and this tax cap proposal is the main reason why."

West Lake Hills Mayor Linda Anthony said even though the city's tax rate raised this year, it is important

to keep the numbers in perspective.

Raising to 7.9 percent may sound like a lot, but West Lake Hills is starting from such a low tax rate that even this year, the rate of \$0.07 cents [per \$100 valuation] is still one of the lowest in the state, Anthony said.

In Bee Cave the city draws substantially more money from sales taxes than property taxes, but that does not mean it is immune to Abbott's proposal. City Manager Clint Garza said although the property tax rate in Bee Cave is at \$0.02 per \$100 valuation, the proposed cap still factors into revenue. Garza said revenue from property taxes from this year to last year, factoring out any new growth, was up about 16.17 percent.

"So I think we estimated \$446,000 is what we would bring in this year," Garza said. "FY 2017-18 would have

CITIES NOT BUYING IT



SAVINGS MAY BE LOWER THAN THEY APPEAR

A similar version of Gov. Abbott's most recent property tax reform proposal went through the Texas Legislature in 2017 and was called Senate Bill 2. The bill did not ultimately pass and proposed to cap property tax revenue for large cities at 4 percent. The following graphic shows savings for the year for owners of a \$250,000 home within five of the largest Texas cities if that version of the bill had been in place in 2016.

	With Homestead exemption	With 65 & older exemption
Austin	\$21.53	\$13.81
Dallas	\$27.69	\$18.83
Houston	\$0	\$0
Fort Worth	\$0	\$0
San Antonio	\$12.01	\$8.89



BY THE NUMBERS

4.33%

The percentage of average increase in tax rates adopted by cities over a six-year period ending in 2016.

16%

The percentage of an average homeowner's annual tax bill taken up by cities statewide.

SOURCE: TEXAS MUNICIPAL LEAGUE/COMMUNITY IMPACT NEWSPAPER

been estimated at \$384,000, so if we were limited to 2.5 percent of that \$384,000, then we would only get \$394,000 in revenue and not \$446,000."

That amounts to a difference of more than \$50,000, which could have an impact on some budgetary considerations, he said.

OTHER BUDGETARY CONSIDERATIONS

Sandlin said most citizens do not realize about 60-70 percent of the average city's budget goes to considerations related to police and fire departments. So even with the exemptions in Abbott's most recent reform proposal for compensation for emergency responders, the cap potentially diminishes what can be collected and allocated for needed equipment.

In relation to essential city employee

salaries and equipment Jones echoed Sandlin's sentiment. Were it not for the state's proposed cap Jones said he doesn't think Lakeway would have raised its reserves by 5 percent.

"We've had this 25 percent level for a decade, and it has worked very well," he said. "The only reason we went to 30 percent is we were afraid we could be hamstrung by this 2.5 percent cap, and then something could come up, [like needing to] hire police or replace equipment. Cars can get in accidents. You never know what might come up, and we would need money for it."

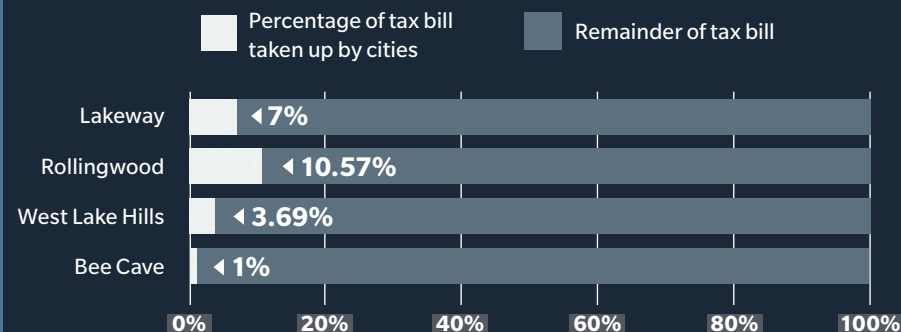
Lakeway has had to put more money in its savings account as part of a strategy that otherwise might not have been necessary, Jones said.

"And that's kind of the point with the state. They're doing this to try to keep taxes down, but they're forcing



PERCENTAGE ON THE BILL

The following graphic shows what percentage each city in the Lake Travis-Westlake area, as a taxing entity, will take up on a homeowner's bill for fiscal year 2018-19.



SOURCES: CITY OF BEE CAVE, CITY OF LAKEWAY, CITY OF ROLLINGWOOD, CITY OF WEST LAKE HILLS/COMMUNITY IMPACT NEWSPAPER

us to raise taxes unnecessarily," he said. "I don't think they've thought that through. I don't think that's their intention, but it's certainly the outcome."

SKYROCKETING HOME VALUATIONS

Bee Cave resident and homeowner Andrea Willott says she is fine with the cap as long as the state can find the money somewhere for needed improvements and services.

One of the reasons she and her husband moved to Bee Cave is the low property taxes, she said.

"I feel that this cap would certainly help younger homeowners who are trying to maintain their expenses," Willott said. "We're wealthy enough to where it wouldn't bother us, but I'm looking at everybody."

In his Oct. 29 proposal framed around "improving student outcomes and maintaining affordability," Abbott states his plan would cap property tax revenue growth year-to-year at 2.5 percent for cities, counties and school districts. Impacted taxpayers would have a right to vote on the matter if entities seek to exceed the allowable rate, according to the plan.

The proposal points out in Texas home valuations have increased faster than incomes, and property taxes are rising faster than the economy.

"People are being taxed out of their homes," the proposal states. "Gentrification and an overall housing affordability crisis are significant problems across the state."

The proposal cites several instances of taxing entities statewide that have risen beyond household incomes in a 10-year period from 2005-15, including county tax levies that have increased by more than 82 percent and city tax levies that have increased by almost 71

percent.

But according to Sandlin, the proposed tax cap on cities would have virtually no effect on the average homeowner. When factoring for what will dramatically change a property owner's yearly tax bill, Sandlin said school districts make up the lion's share.

While school districts account for between 55-60 percent of the average homeowner's tax bill, cities only comprise an average of 16 percent, Sandlin said. Essentially cities and counties are being the most vocal about the tax cap because they have the most to lose, he said.

Johnny Hill, Lake Travis ISD assistant superintendent for business, financial and auxiliary Services said while he applauds Abbott for wanting to address property tax issues, he is concerned right now the state's proposed policy is still vague, and he wishes the governor would bring more stakeholders into the discussion.

Hill said there are implications for LTISD, as Abbott's cap does include school districts, but it is much more complicated and there are more revenue guarantees for school districts. For cities and counties, the math is potentially much more detrimental.

Hill said his concerns for school districts are warranted, but cities and counties will likely have to brace for a harder hit.

"They're going to be cut on what they can actually bring into their coffers," Hill said, regarding if the tax cap passes. "And for [cities and counties], what's scary is they may have to go up more on the tax rate to compensate for that."



For more information, visit
communityimpact.com.

TRASHING RECYCLABLES

Many materials that could be recycled through existing Texas programs, such as plastic film, textiles and unpainted wood, are not accepted in curbside bin programs due to causing potential problems in sorting facilities.



65.1%
of trash could
be recycled.

42.4%
of landfill waste is
recyclable materials.



Texans dispose of about
21 MILLION
tons of trash a year, meaning
8.9 MILLION
tons of recyclables are buried annually.



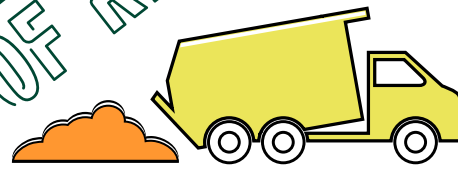
In 2015 the Texas Legislature directed the Texas Commission on Environmental Quality to produce a study on the economic impacts of recycling. The report covered current efforts, ways to increase recycling, potential job creation that could result from increased recycling and more.

School bus = 960 cubic feet



x1.94
MILLION

Recyclables that Texas buries every year could fill
1.94 million school buses.



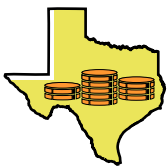
23%
of municipal
waste is recycled.



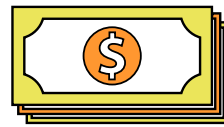
17,000
Texans held recycling industry
jobs in 2015.

THE ECONOMIC

IMPACTS OF RECYCLING



\$3.3 BILLION
of the 2015 Texas economy came
from the recycling industry.



\$195 MILLION

of revenue generated from the recycling industry
for state and local governments in 2015 came from
sales taxes, property taxes, and other taxes and fees.

SOURCES: ENVIRONMENTAL PROTECTION AGENCY, TAKE CARE OF TEXAS, TEXAS CAMPAIGN FOR THE ENVIRONMENT, TEXAS COMMISSION ON ENVIRONMENTAL QUALITY/COMMUNITY IMPACT NEWSPAPER

CONTINUED FROM 1

program and educating the public on what can and can't be recycled is substantial for us to be able to reach our 90 percent zero-waste goal," Auckland said.

The county joined the city of Austin in 2014 with the goal of diverting at least 90 percent of discarded materials from landfills by 2040. To reach this goal Travis County created a Green Team that has helped increase the diversion rate of the waste produced by the county from 5 percent to 34 percent, Auckland said. The county also purchased recycling and trash containers for public spaces at county facilities in 2016.

However, nearly 3 out of every 4 county-maintained parks do not provide recycling options. With 500,000 annual visitors to parks in the western part of the county alone, few options exist to recycle materials at the parks, said Timothy Speyrer, Travis County Parks district manager.

Resident Joan Quenan said it is

difficult to recycle in many county parks.

"I usually have to take my stuff home to recycle it, which most people won't bother doing," said Quenan, who often utilizes hiking trails at several county parks. "We should be teaching people how to recycle by having it readily available in the parks."

RETHINKING RECYCLING

Public access to recycling services sends the message that recycling is something one should always do, said Andrew Dobbs, Texas Campaign for the Environment Central Texas program director and legislative director.

"It takes [recycling] from this luxury process or something that's a nice thing to do to a basic service done because it's the responsible thing to do," Dobbs said. "It shouldn't be a moral behavior or cultural touchstone. Recycling is the basic way of handling materials that still have valuable life left in them."

Recycling can also have a positive impact on the economy, according to a

2015 study done by the Texas Commission on Environmental Quality.

During each stage of the process, from collection to manufacturing, economic activity is generated in the form of employment and workers' wages, the report states.

However, when a person goes to a government facility—whether a park, office building or other center for services—and recycling receptacles are not available, this reinforces the idea that throwing materials into a landfill is an appropriate step to take, when in actuality it is a waste of energy and resources, Dobbs said.

As someone who works with government entities on environmental issues, Dobbs said it did not surprise him that only 23 percent of the county's parks have recycling.

An unfortunate reality in Texas is that landfill disposal of waste is cheaper and easier than recycling, which has not been a priority for waste management, Dobbs said.

"It's a long-term struggle," he said. "But the county is looking to change and clearly asking the right questions."

ADDRESSING THE ISSUE

As a first step in providing more recycling options, the county is collecting data using a geographic information system, or GIS, application. The "Collector" app keeps track of containers and production of waste at parks. To date 13 county parks are mapped, Speyrer said.

"We are using the GIS information to look at how many trash cans and recycling receptacles are in the park, if we're missing certain areas and if we have enough receptacles," Speyrer said. "From that data, we will develop a waste management plan to address this moving forward."

Auckland said county staff will start the process of creating the solid-waste management plan in January. The plan will outline anticipated costs and provide a suggested timeline to expand recycling services, remove substandard

DIVE INTO HAMILTON POOL



Travis County is using a geographic information system to map waste-management assets in its parks. As it stands staff has catalogued more than 600 data points at 13 parks. Here is a snapshot of data collected at Hamilton Pool, one of the six county-maintained parks with recycling receptacles.

-  **Twin bins**
-  **Recycling containers**
-  **Trash containers**

SOURCE: TRAVIS COUNTY PARKS/COMMUNITY IMPACT NEWSPAPER

containers, and implement uniform signage to designate waste and recycling receptacles.

Improving recycling services and waste management across all the county-maintained parks will likely happen in phases, she said.

Taking inventory is just one element of the conversation. The county is also exploring different types of containers for proper disposal of both trash and recyclables.

"It's not just a matter of going out and buying a Rubbermaid trash can," Speyrer said. "These durable, weather-resistant containers are not cheap. We are piloting a few different types to determine what is the most durable and works the best."

In flood-prone locations concrete containers are less likely to be whisked away in floodwaters, Auckland said. For sports complexes and other parks with flat, open fields, the county is

researching sturdy but easily-relocated bins. Wooded parks need containers that can prevent animals from getting inside the bins, she said.

"IT SHOULDN'T BE A MORAL BEHAVIOR OR CULTURAL TOUCHSTONE. RECYCLING IS THE BASIC WAY OF HANDLING MATERIALS THAT STILL HAVE VALUABLE LIFE LEFT IN THEM."

— ANDREW DOBBS, TEXAS CAMPAIGN FOR THE ENVIRONMENT CENTRAL TEXAS PROGRAM DIRECTOR AND LEGISLATIVE DIRECTOR

The county has ordered several new models of "twin bin" containers that pair recycling on one side and trash on the other. This side-by-side pairing promotes proper placement of both waste and recyclables and reduces potential misplacement of the different materials, Speyrer said.

"We are aware of human nature," he said. "It has to be easy to recycle, or people won't do it."

Consistent, uniform signage in English and Spanish that includes clear illustrations is another aim of the county's recycling effort. Without clearly depicting which materials can and cannot be diverted from the landfill, recycling efforts could still fall short, Auckland said.

"There has to be a substantial amount

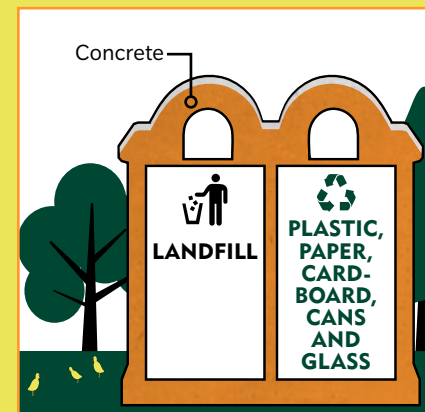
LET'S TALK TRASH

Travis County is considering several models of twin bin containers, which pair recycling on one side and trash on the other, for local parks. This promotes proper placement of landfill waste and recyclables and reduces potential misplacement of materials, said Timothy Speyrer, Travis County Parks district manager.



For parks with flat, open fields, the county is researching sturdy but easily relocated bins, like the one depicted above.

SOURCE: TRAVIS COUNTY PARKS/COMMUNITY IMPACT NEWSPAPER



County staff is piloting concrete containers similar to the one illustrated here in flood-prone locations.

of education for the public and [parks] staff in order to have successful buy-in," she said.

One park alone can have 100 or more units, Speyrer said. Twin bins can range from \$642 to upwards of \$1,000 each. This adds up quickly when implementing a new program in 26 public parks.

WHY RECYCLE?

Resident David Mack Endres said it would be great for the county to provide more recycling containers in the parks, but he doubted the recycle stream would be very clean.

"Many people disregard the need to segregate [recyclables]," he said. "If [the county] could provide true single-stream recycling for everything but organic waste, it might be useful."

Harry Cleaver, an associate professor of economics at The University of Texas at Austin, said he wondered why so few parks offered recycling bins.

"If containers can be made available

to every resident, why not to the parks?" Cleaver said.

Determining how to prioritize recycling in county parks depends on where funds would come from, he said, adding he wondered if new taxes would be levied to fund recycling efforts.

Dobbs said it is important to remember when throwing trash away, there is actually no such place as away.

"When trash is thrown away, it is actually being sent to someone's neighborhood," Dobbs said. "A lot of our landfill stuff goes to low-income communities—places where people are vulnerable to the harmful impacts of waste."

With landfills come associated odor, noise, vermin and other issues, Dobbs said.

"It's important we minimize what we discard," he said. "If we recycled everything, we wouldn't need the landfills."

Tell us what you think.
Comment at communityimpact.com.

Serving Austin & surrounding areas for over **50 years!**
RESIDENTIAL & COMMERCIAL

Culligan Water

Your only **Full Service** Water Treatment Company

We Make Water Better!
CULLIGAN OF AUSTIN
505 W. Yager Lane, Austin, Texas 78753
www.culliganofaustin.com

512-985-9134

100% SATISFACTION GUARANTEE

Got stockings to stuff?
Come see us!

Whole Earth
PROVISION CO.

WholeEarthProvision.com

40-year master plan Nov. 1. Designed in response to rapidly growing demand, the document outlines ABIA's infrastructure map and development plans.

EXPANDING ABIA

By 2030 officials at ABIA plan to grow the airport by 20 gates, excluding the ongoing nine-gate development scheduled to open this spring. Those additional 20 gates would be constructed as a separate terminal to run parallel to the existing Barbara Jordan Terminal at ABIA.

Ultimately, ABIA officials are planning to add 32 total gates by the end of 2040. The terminal expansion will enable ABIA to handle 31 million passengers annually, Estabrook said—approximately double the number of travelers the airport currently serves. With those gates Estabrook states ABIA can offer more direct flights nationally and internationally.

ABIA added direct flights to Europe via British Airways, Norwegian Air Shuttle and Lufthansa in the past year alone, per Estabrook. ABIA now offers more than 80 total direct flights. The planned gate expansions will soon allow ABIA to process multiple Airbus A380s, the largest commercial airplanes in the industry, on its runways for the first time ever.

But before ABIA fully expands its gates, Estabrook says the airport needs to build up its supporting infrastructure, including the airport's departure drop-off and terminal service areas. The terminal service area expansion included in the first decade of work would expand check-in terminals, Transportation Security Administration gates and the baggage claim area.

"Check-in functions will be removed from the Barbara Jordan Terminal," ABIA Executive Director Jim Smith told Austin City Council on Oct. 30.

A new processing center will go where the parking garage sits today, Smith said. ABIA will demolish the existing garage

to make space. Construction crews are working on a 6,000-space parking garage, which Smith expects to open at ABIA around January. In all the airport plans to add 11,000 new parking spaces by 2029.

To help the capital area's growing population get to and from ABIA, the Texas Department of Transportation has more than \$4.89 billion outlined in funds to expand and maintain roads surrounding the airport, per numbers from the agency's online project tracker.

ABIA additionally has a relocation of SH 71 listed on its 2040 Master Plan, though no such plans for a relocation are in TxDOT's project tracker. Derick Hackett, a public information specialist for ABIA, said the airport expects traffic to heavily congest SH 71 by 2040, and officials are looking to get out ahead of the issue.

"That's something we're noting and making everyone aware, looking into how SH 71 is going to be able to handle that many passengers," Hackett said.

Between the 20-gate expansion, the terminal processing center expansion, drop-off and pickup area improvements, and construction of a larger central baggage system, ABIA officials estimate the first phase of its expansion plan to carry a price tag of \$4.3 billion.

The airport has several funding tools at its disposal to help with expansion efforts, according to Hackett, including private capital, state and federal grant funds, public and private partnerships, and revenue bond sales, which are not backed by taxpayer funds.

TEXAS' FIRST-CLASS ECONOMY

TxDOT in October released its "Economic Impact of Aviation" study, a review of how Texas' airports affect local economies. According to the report ABIA in 2017 generated a total economic output of \$7.61 billion, a figure totaling on-airport businesses, capital improvement projects, off-airport visitor spending and



A rendering shows future construction of a new terminal and gates at Austin-Bergstrom International Airport.

secondary impacts attributed to a multiplier effect in which the injection of new money leads to more spending. In comparison ABIA generated \$2.41 billion of economic output just 10 years ago, according to Smith.

The study also found that ABIA accounted for the employment of 74,148 people with a total annual payroll of \$2.51 billion. However, Greg Miller, director of Planning and Programming of Aviation and Air for TxDOT, said the most tremendous growth in Texas occurred with small operations.

"Sometimes folks perceive the airport doesn't generate a lot to the local economy," Miller said.

ABIA AT FULL BUILD-OUT

Airport expansion in the area boils down to meeting demand. As ABIA's 21-county service area continues to explode in population, the area's airports must respond. Austin is the nation's 11th-most populous city, according to the U.S. Census Bureau, though Federal Aviation Administration figures show ABIA ranked 34th in the nation in 2017 in total enplanements, or boardings.

According to those same FAA figures, ABIA is the fourth-fastest growing

medium-hub airport in the nation in terms of total boardings. In 2017, ABIA experienced an 11.77 percent year-over-year growth in boardings from 2016, up to 6.81 million enplanements.

The FAA only counts departures in its enplanement figures, effectively counting just half of ABIA's total annual passengers, per Estabrook. She stated ABIA is experiencing a 15.5 percent growth in passengers this year through August, meaning the airport could see close to 8 million total enplanements by the end of 2018.

Both Estabrook and Kaluza said their respective airports are taking measured, cautious approaches to expansion—and the airports have a lot of room to grow.

ABIA has 42 acres to build out its gate expansions, and Estabrook said the airport's "ultimate plan" for full buildout is to accommodate approximately 70 million annual passengers. Per Estabrook, that is similar to Denver International Airport's traffic, which the FAA pegs as the fifth-busiest airport in the United States.

"The campus itself can handle anywhere from 60 [million] to 70 million [annual passengers] if we ever have that need," Estabrook said.



One in six breast cancers occur in women age 40-49.

Visit **ThanksMamm.com** to schedule your appointment.
You'll be glad you did.



AT A GLANCE:

Austin-Bergstrom International Airport

DESIGNED BY
MIRANDA BAKER

IN 2040

ABIA's 2040 Master Plan is split into four distinct phases. Before ABIA can begin to add more than two dozen gates, the airport must invest in expanding its current facilities and surrounding infrastructure.

ABIA will open a \$350 million, nine-gate expansion this spring.

JACK EAGLER/COMMUNITY IMPACT NEWSPAPER



To handle the influx of passengers at the airport, ABIA will expand the terminal entrance, including check-in and security.

RENDERING COURTESY AUSTIN-BERGSTROM INTERNATIONAL AIRPORT



When its full 32-gate terminal expansion opens, ABIA will be able to handle 31 million annual passengers.

RENDERING COURTESY AUSTIN-BERGSTROM INTERNATIONAL AIRPORT

SOURCE: AUSTIN-BERGSTROM INTERNATIONAL AIRPORT/COMMUNITY IMPACT NEWSPAPER

KEY

PHASE 1: 2019-27

- 1 **General aviation addition**
Private planes, charter services, corporate planes
- 2 **Fuel farm**
- 3 **Warehouse**
- 4 **Cargo flights development**
Expansion of cargo area for services such as FedEx, UPS and DHL
- 5 **Aeronautical development areas**
Any development that may support aviation, such as repair stations
- 6 **Nonaeronautical development areas**
Areas that do not directly support aviation, such as retail or water storage
- 7 **Support facilities**
Areas to house support staff and facilities, such as administrative offices
- 8 **Terminal processing and central baggage system**
- 9 **20-gate expansion**

PHASE 2: 2028-32

- 10 **Cargo flights development**
- 11 **Remaining 12-gate expansion**
- 12 **Aircraft maintenance**
- 13 **High-speed transit**
- 14 **Support facilities**

PHASE 3: 2033-37

- 15 **Aircraft maintenance**

PHASE 4: 2040 AND BEYOND

- 16 **Nonaeronautical development areas**
- 17 **New runway/runway improvements**
- 18 **Relocated SH 71**
ABIA officials have included a relocation of SH 71 to its 2040 Master Plan to increase the highway's capacity for the airport expansion



A Time for Renewal

Silverado provides care in a secure, life-enriching environment, including around-the-clock licensed nurses and specially-trained caregivers.

Our flexible, short-term care options can provide family caregivers extra support throughout year.

#145495 & 103843

(512) 263-2544
silverado.com/beecave

bee cave
SILVERADO
memory care | community



Personalized Eye Care and Vision Correction from Friendly Experts



Dr. William McGlathery

Dr. Halsey Settle

Dr. Peter Broberg

Dr. Ximena de Sabra

We take great pride in the quality of care we provide

**ACCEPTING
NEW PATIENTS**

4207 James Casey Street #305
brobergeyecare.com | (512) 447-6096

Follow the glow!



Come see the 2018 holiday lights display at our Johnson City headquarters.

1.3 million lights shining bright every evening,
Nov. 23 – Jan. 6.

pec.coop/holiday-lights



SAME DAY APPOINTMENTS

- Well Checks
- Flu Shots
- Sick Visits

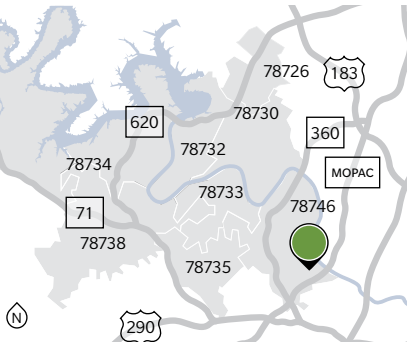
Your Neighborhood Doctors. Multi-specialty Care.



ADC Steiner Ranch
5145 RM 620
Austin, TX 78732
512-901-1111 | adclinic.com

ROLLINGWOOD

Rollingwood is located in Eanes ISD and just minutes from downtown Austin. It is an incorporated city with rolling hills, ample shade and sprawling properties. This upscale suburb is within walking distance to both Zilker Park and the Town Lake Trails. Shopping, dining and medical facilities are also nearby. The area is filled with custom homes that vary in style and age.



Median home value	Homes on the market*	Homes under contract*
\$1,618,222	3	0
Median annual property taxes	Median price per square foot	Average days on the market*
\$31,730	\$453.94	88



Build-out year: 1946-2018 with teardowns and rebuilds
Square footage: 1,896-8,393
Home values: \$703,250-\$6,400,000
HOA dues (estimated): no HOA
Amenities: Rollingwood Park and Pavilion; Western Hills Athletic Club with a pool, tennis, basketball and sand volleyball courts as well as a playscape; softball fields are managed by Western Hills Girls Softball
Schools: Eanes Elementary School, Hill Country Middle School, Westlake High School
Property taxes (in dollars) :

Travis County	0.36900
Lake Travis ISD	1.20000
Travis Co. Hospital District	0.10739
City of Rollingwood	0.20890
Travis Co. ESD No. 9	0.07550
Total (per \$100 value)	1.96079

RECENT LISTINGS

2403 Hatley Drive

5 bedroom/8 bath 8,393 sq. ft. \$6,400,000
Agent: Robin Banister
Compass Real Estate 512-589-6090

5 Inwood Cv.

4 bedroom/5.5 bath 5,003 sq. ft. \$4,250,000
Agent: Eric Moreland
Moreland Properties 512-480-0844

503 Vale St.

4 bedroom/4 bath 4,697 sq. ft. \$1,995,000
Agent: Edward Askelson
Bershire Hathaway 512-656-2542

400 Ridgewood Rd.

5 bedroom, 6 bath 5,572 sq. ft. \$3,399,000
Agent: Sean Rose
Rose and Associates 512-470-3654



MOVE-IN READY.
JUST ADD HOLIDAY DECOR.

Start making holiday memories sooner rather than later. Right now, Trendmaker Homes has a wide selection of gorgeous, move-in ready homes throughout the Austin area with everything on your wish list. This year, you'll be ready when the family arrives with features like a spacious kitchen and open floor plan that make entertaining merry and bright.

TRENDMAKER
HOMES

TrendmakerHomes.com • (512) 575-4714

The prices of our homes, included features, plans, specifications, promotions/incentives, neighborhood build-out and available locations are subject to change without notice. Stated dimensions, square footage and acreage are approximate and should not be used as a representation of any home's or homesite's precise or actual size, location or orientation. There is no guarantee that any particular homesite or home will be available. A Broker/Agent must register their client in person on client's first visit at each community for a Broker/Agent to receive a commission or referral fee, if available. Not all features and options are available in all homes. Unless otherwise expressly stated, homes do not come with hardscape, landscape, or other decorator items. Photographs or renderings of people do not depict or indicate any preference regarding race, religion, gender, sexual orientation, disability, familial status, or national origin. Our name and the logos contained herein are registered trademarks of TRI Pointe Group, Inc. and/or its subsidiaries. © 2018 Trendmaker Homes, Inc., a member of the TRI Pointe Group. All rights reserved.



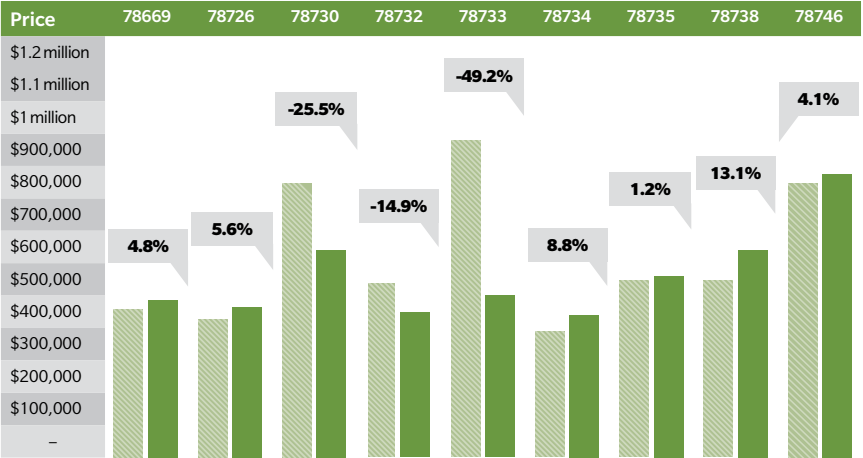
MARKET DATA

HOMES SOLD (NOVEMBER 2018)

Number of homes sold / average days on the market									
Price range	78669	78726	78730	78732	78733	78734	78735	78738	78746
\$149,999 or less	2/3	-	-	-	-	-	-	-	-
\$150,000-\$199,999	1/7	-	-	-	-	1/1	-	-	-
\$200,000-\$299,999	1/15	-	1/8	-	-	2/166	1/39	1/53	-
\$300,000-\$399,999	1/98	2/69	-	5/51	-	10/92	2/70	6/33	1/3
\$400,000-\$499,999	1/29	4/91	-	6/65	2/12	4/75	1/2	9/52	1/27
\$500,000-\$599,999	3/94	4/75	1/95	-	2/167	4/97	5/18	11/82	-
\$600,000-\$799,999	-	-	2/22	2/288	1/0	2/194	-	20/76	4/40
\$800,000-\$999,999	1/124	-	-	1/7	-	4/180	3/53	4/28	8/42
\$1 million+	2/269	-	1/128	1/43	-	2/232	4/158	8/144	11/99

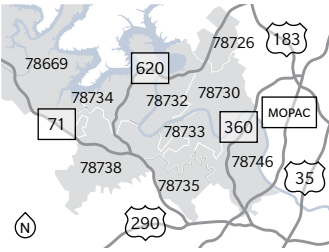
MEDIAN PRICE OF HOMES SOLD IN OCTOBER

2017 VS. 2018



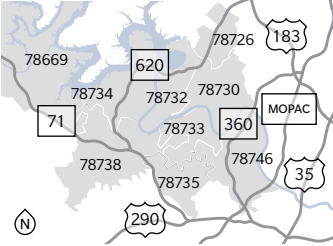
RECENT PROPERTY LISTINGS

ZIP code	Subdivision	Address	Bed/Bath	Price	Sq. ft.	Agent	Phone	Agency
78669	Briarcliff	511 Cowal Drive S.	3br/3ba	\$379,000	2,274	Wendy Elder	Keller Williams-Lake Travis	512-784-0962
78669	Briarcliff Inc	209 Alloway Drive	3br/2ba	\$310,000	1,541	Bertina Schreiber	Moreland Properties	512-796-5740
78669	Crosswind	3605 Crosswind Drive #B	3br/3ba	\$625,000	2,700	Stacey Deville	Moreland Properties	512-650-6364
78669	Curiosity Cave	2218 Pace Bend Road	6br/4ba	\$675,000	3,360	Wendy Elder	Keller Williams-Lake Travis	512-784-0962
78669	Curiosity Cave	1814 Pace Bend Road	3br/3ba	\$595,000	2,499	Eileen Depew	Keller Williams-Lake Travis	512-567-9915
78669	Curiosity Cave	2016 Pace Bend Road	4br/4ba	\$712,500	3,085	Eileen Depew	Keller Williams-Lake Travis	512-567-9915
78669	Reserve At Lake Travis	2109 Longacres Cove #3	3br/2ba	\$869,000	1,718	Paula Pierce	Engel & Volkers Austin	727-599-3111
78669	West Cypress Hills	22308 Verbena Parkway	5br/4ba	\$539,988	3,590	Kasey Dalby	Keller Williams Realty	512-688-0395
78669	Whitecliff Condominia	1601 Judy Lynn Drive #201	3br/2ba	\$379,000	1,279	Tammy Templin	Coldwell Banker United, Realtors	512-796-5559
78726	Estates Brentwood	11416 Monet Drive	4br/2ba	\$539,000	2,323	Julie Pratt	Coldwell Banker United, Realtors	512-413-8781
78730	Briarpatch	7201 Oak Shores Drive	4br/4ba	\$1,085,000	3,750	Gregory Cooper	Kuper Sotheby's Int. Realty	512-565-0499
78730	River Place	6314 River Place Blvd.	3br/3ba	\$649,900	2,859	Ken Bartlett	Keller Williams Realty C.P.	512-418-1435
78730	Westminster Glen	4513 Court Of St James	5br/4ba	\$1,169,000	5,411	Andy Allen	Keller Williams Realty	512-785-0496
78732	Steiner Ranch	1213 Red Oak Valley Court	3br/2ba	\$520,000	2,255	Rhonda Gehrke	Realty Austin	512-567-6168
78732	Steiner Ranch	12608 Calistoga Way	3br/2ba	\$385,000	2,140	Lori Wakefield	Keller Williams-Lake Travis	512-657-4455
78732	Steiner Ranch	3808 Caney Creek Road	3br/3ba	\$339,000	1,937	Kacy Dolce	Kuper Sotheby's Int. Realty	512-426-1865
78732	Steiner Ranch	12601 Calistoga Way	4br/4ba	\$565,000	3,297	Patti Simon	Realty Austin	512-913-4124
78732	Steiner Ranch	12604 Belcara Place	3br/3ba	\$440,000	2,682	Gene Arant	Keller Williams-Lake Travis	512-261-1000
78732	Steiner Ranch	2609 Old Hickory Cove	4br/4ba	\$720,000	3,245	Darlene Campbell	Century 21 Hellmann Stribling	512-818-1887
78732	Steiner Ranch	3205 Prairie Clover Path	5br/4ba	\$765,000	3,827	Erin Turnley	Coldwell Banker United, Realtors	206-310-9525
78733	Barton Creek West	2112 Cliffs Edge Drive	4br/5ba	\$865,000	3,986	Jennifer Kuenzler	Team Price Real Estate	512-299-1107
78734	Apache Shores	2600 Indian Creek Road	3br/3ba	\$425,000	2,334	Laurel Prats	Engel & Volkers Austin	512-636-7579
78734	Apache Shores	2304 Quanah Parker Trail	4br/3ba	\$219,000	1,908	Betsy Doss	RE/MAX	512-744-4555
78734	Edgewater	101 Edgewater Cove	4br/5ba	\$1,650,000	3,941	Bertina Schreiber	Moreland Properties	512-796-5740
78734	Fairlake Condo	208 Fairlake Circle #13	3br/3ba	\$410,000	1,871	Sandy Cary	Kuper Sotheby's Int. Realty	512-589-1002
78734	Lakeway	205 Copperleaf Road	4br/3ba	\$425,000	2,469	Cara Keenan	Realty Austin	512-917-2326
78734	Lakeway	813 Malabar St.	4br/3ba	\$542,000	3,108	Jonathan Creath	Kuper Sotheby's Int. Realty	512-406-1086
78734	Lakeway	109 Morning Cloud Cove	3br/3ba	\$515,000	2,400	Laurel Prats	Engel & Volkers Austin	512-636-7579
78734	Lakeway	109 Cold Water Lane	3br/3ba	\$700,000	3,057	Steven Dedear	Coldwell Banker United, Realtors	512-971-3732
78734	Lakeway	213 Hurst Creek Road	4br/3ba	\$425,000	2,576	Erin Sigler	Keller Williams-Lake Travis	512-423-7122
78734	Lakeway	412 Eagle	3br/3ba	\$447,000	2,522	Wendy Elder	Keller Williams-Lake Travis	512-784-0962
78734	Lakeway	901 Palos Verdes Drive	4br/4ba	\$995,000	3,501	Simon Magnus	Coldwell Banker United, Realtors	512-844-7999
78734	Preserve	901 Barrie Drive	4br/3ba	\$717,400	3,608	Crystal Olenbush	AustinRealEstate.com	512-422-3452
78734	Rough Hollow	226 Canyon Turn Trail	5br/7ba	\$2,500,000	8,559	Jana Birdwell	Kuper Sotheby's Int. Realty	512-784-8600
78734	Travis Landing	15304 Rainbow One	4br/4ba	\$1,378,000	3,364	Amber Hart	Keller Williams-Lake Travis	512-415-9023
78735	Barton Creek	8106 Chalk Knoll Drive	7br/11ba	\$10,750,000	13,686	Julie Mack	Kuper Sotheby's Int. Realty	512-426-5395
78735	Estates Above Lost Creek	3510 Caribou Trail	3br/3ba	\$1,150,000	3,231	Eve Kush	Coldwell Banker United, Realtors	512-845-0405
78735	Ridge At Barton Creek	1400 Club Ridge Cove	4br/3ba	\$799,000	2,739	Lisa Sexton	Kuper Sotheby's Int. Realty	512-751-7321
78735	Travis Country	4810 Canyonbend Circle	3br/2ba	\$469,987	1,538	Laura De Haro	Keller Williams Realty	512-484-5919
78735	Travis Country Green	5625 Hero Drive	4br/2ba	\$559,997	2,166	Ricky Cain	Keller Williams Realty	512-794-6643



RECENT PROPERTY LISTINGS

ZIP code	Subdivision	Address	Bed/Bath	Price	Sq. ft.	Agent	Phone	Agency
78738	Belvedere	17117 Flagler Drive	4br/4ba	\$1,550,000	3,752	Jana Birdwell	Kuper Sotheby's Int. Realty	512-784-8600
78738	Belvedere	17737 Flagler Drive	4br/5ba	\$1,395,000	4,583	Jana Birdwell	Kuper Sotheby's Int. Realty	512-784-8600
78738	Centerpiece	12 Tourney Lane	4br/5ba	\$519,000	2,799	Chadwin Barley	Keller Williams-Lake Travis	512-589-3251
78738	Flintrock At Hurst Creek	213 Golden Bear Drive	5br/4ba	\$675,000	3,671	Tomas Corzo	Keller Williams Realty	512-567-4509
78738	Golf Cottages Of Academy Place	36 Tournament Way E. #36	2br/2ba	\$297,000	1,387	Eileen Depew	Keller Williams-Lake Travis	512-567-9915
78738	Hills Lakeway	72 Tiburon Drive	5br/6ba	\$899,000	3,982	Alan Adams	Realty Austin	512-466-8044
78738	Hills Lakeway	37 Hedgebrook Way	5br/5ba	\$850,000	4,277	Alan Adams	Realty Austin	512-466-8044
78738	Lakes Edge	2417 Berkleys Brook Drive	4br/4ba	\$824,990	3,213	Sarah McAloon	Sisu Realty & Associates	512-791-7776
78738	Lakeway Highlands	318 Duffy Lane	3br/4ba	\$558,000	3,732	Annette Ramey	Keller Williams-Lake Travis	512-413-0159
78738	Lakeway World Tennis Condo	132 World Of Tennis St.	4br/4ba	\$297,000	2,272	Jennifer Antolik	JB Goodwin, Realtors	512-925-5366
78738	Ridge At Alta Vista	146 Lakota Pass	4br/4ba	\$860,000	5,610	Chadwin Barley	Keller Williams-Lake Travis	512-589-3251
78738	St Andrews	30 Troon Drive	3br/2ba	\$350,000	1,936	Cyndi Cummings	Realty Austin	512-423-6782
78738	Sweetwater	18609 Van Meter	4br/4ba	\$513,434	3,311	Susan Reames	Coldwell Banker United, Realtors	832-914-0048
78738	Sweetwater	6605 Davenport Divide Road	5br/5ba	\$699,000	4,241	Miquel Dunkley	Horizon Realty	512-964-0570
78738	Sweetwater	18120 Lipan Apache Cove	4br/4ba	\$550,000	3,618	Warren Chirhart	Keller Williams-Lake Travis	512-925-9182
78738	Terra Colinas	15508 Cinca Terracera Drive	3br/4ba	\$435,000	2,785	Greg Walling	Moreland Properties	512-633-3787
78738	Villas At Flintrock	28 Borello Drive	2br/2ba	\$459,500	2,155	Doug Land	Kuper Sotheby's Int. Realty	512-940-6645
78738	Villas At Flintrock	18 Borello Drive	2br/3ba	\$500,000	2,195	Julie Reistrup	Keller Williams-Lake Travis	512-638-7631
78746	Davenport Ranch	2911 Round Table Road	4br/4ba	\$879,000	2,885	Beth Carter	Moreland Properties	512-799-7427
78746	Davenport Ranch	5811 Kentucky Derby	4br/4ba	\$850,000	3,070	Tracy Picone	Realty Austin	512-573-8851
78746	Davenport Rim	2800 Waymaker Way #12	3br/4ba	\$560,000	2,377	Deborah Novelli	Realty Austin	512-699-0856
78746	Deer Creek	3519 Fawn Creek Path	2br/2ba	\$565,000	1,971	Janice Hurst	Kuper Sotheby's Int'l Rlty	512-507-6988
78746	Hills Lost Creek	6307 Indian Canyon Drive	4br/3ba	\$749,999	2,782	Tom Amiss	Keller Williams Realty	512-422-2238



Residential real estate listings added to the market between 11/15/18 and 12/3/18 were provided by the Austin Board of Realtors. Although every effort has been made to ensure the timeliness and accuracy of this listing, Community Impact Newspaper assumes no liability for errors or omissions. Contact the property's agent or seller for the most current information.



Give us a call today!
(512) 261-6409
www.lspools.com

Building luxury, custom pools
and backyard escapes
since 1984.



**TIMMONS INSURANCE GROUP
WISHES YOU A MERRY CHRISTMAS
& A HAPPY NEW YEAR**

We write for personal lines and commercial business insurance

1310 Ranch Road 620 S,
Suite A-11,
Austin, TX 78734
512-402-0595

Cedar Park
715 Discovery Blvd. Suite 413
Cedar Park, TX 78613
512-260-7000

Kingsland
106 Cottonwood Suite C
Kingsland, TX 78639
325-388-4934

 timmonsinsuranceagency.com | admin@timmonsinsuranceagency.com

FOR SALE



MODERN TEXAS FARMHOUSE
8 Cheverly Court,
The Hills, TX 78738
4 beds | 4 baths |
3,726 sq. ft.
\$989,000

NEW CONSTRUCTION



WATERFRONT CONDO IN VILLAS ON TRAVIS
2918 RR 620 N.,
Austin, TX 78734
3 bed | 4 bath |
2,714 sqft.
\$625,000

AVAILABLE



INCOMPLETE CONSTRUCTION
213 Crescent Bluff Cove,
Lakeway, TX 78734
4 bed | 4 bath | 2,708
sqft.
\$485,000

JUST LISTED



KELLER WILLIAMS
Luxury
INTERNATIONAL

kw LAKE TRAVIS
KELLER WILLIAMS REALTY®

Mary Lynne Gibbs
Broker Associate, ABR, CLHMS,
CRB, CRS, GRI, e-PRO
512-431-2403
AustinLuxuryBroker.com



We engage with the latest technologies, market research and business strategies to deliver an unsurpassed client experience. More importantly, we listen and that means we find solutions tailored to you.

Text KWAUSTIN to 44222 for Our Austin Festival Guide



Shop at **GATEWAY TO FALCONHEAD** for the holidays and always!



WELCOMING OUR NEWEST TENANT



OPENING SOON



CURRENT TENANTS



MAGPIE

512-494-5198 • magpieblossoms.com

We are a family owned & operated full service floral & gift boutique. We believe in old-fashioned personal service, attention to detail & a commitment to bringing you unique gifts & floral design.



VILLAGE VETERINARY HOSPITAL

512-263-2229 • villagevetaustin.com

We are a full-service veterinary hospital providing Central Texas pet owners throughout SW Austin, Lakeway and Bee Caves with the best in state-of-the-art veterinary technology & medicine, pet care, surgery and dentistry for all of our canine, feline and other furry family members.

BON JAPANESE CUISINE AND SUSHI

512-645-0208 • bonaustin.com



Japanese cuisine and sushi is rated 4.5 out of 5 stars on YELP and 4.9 out of 5 stars on Facebook.



LAKEWAY PHARMACY

512-502-5161
lakewaypharmacy.com

We are a neighborhood integrative one-stop health and wellness shop offering a unique mix of holistic solutions with your traditional pharmacy services.

**15% OFF
ONE ITEM**
EXPIRES 1-16-2019



THE WARDROBE

512-434-0803
thewardrobetx.com

At The Wardrobe, we carefully curate our apparel & goods based on comfort, quality, and affordability in Austin Style! You'll find many one-of-a-kind items from around the globe.

**15% OFF
ONE ITEM**
EXPIRES 1-16-2019



AUSTIN HOMECARE

512-766-1099
austinhomework
assistance.com

We are a locally family owned and operated in-home senior care provider offering hourly and live-in in-home assisted living services for seniors and disabled adults.

\$100 OFF
EXPIRES 1-16-2019

Gateway to Falconhead



RR 620 S & Falcon Head Blvd,
Bee Cave, TX 78738



IMPACT DEALS



SLOAN + PARKER

Now
Open

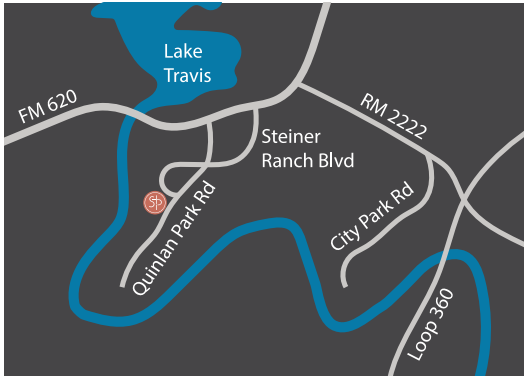
WINE | BEER | TASTINGS | BITES | MARKET | EVENTS

Located in the heart of Steiner Ranch, Sloan + Parker is your locally-owned wine and beer lounge just a few minutes away from home.

Come in for a drink, get some work done, read a book, or meet up with friends. Go home with new memories and a fantastic new bottle from our wine market.



Come in. Sip awhile.



2900 N. Quinlan Park Rd, Suite 150
Austin, TX 78732
(512) 294-2416 | sloanandparker.com

DEALS THIS MONTH

BEAUTY & FITNESS

FitDel 50

DINING

827 Ray's Kitchen + Cellar 50
Bahama Buck's 55
Cafe Blue 55
Craig O's Pizza & Pastaria 50
Edible Arrangements 54
Hill Country Cakery 57
La Bodega Gourmet 53
Last Stand Brewing Company 56
LT Corner Pub 50
Sakura Sushi & Bar 56
Sloan + Parker 49
Thundercloud Subs 54
Trattoria Toscano 57
Vivel Crepes & Coffee 58

HOME & GARDEN

Five Star Painting 51
The Great Outdoors 53
Wild Bird Center of Lakeway 54

PROFESSIONAL SERVICES

Austin Estate Gate 55
Critter Ridder 51
Culligan Water 51
Grass-works Lawn Care 56
Lakeway Eye Physicians and Surgeons 56
Real Green Pest Control & Lawn Care 57

RETAIL

Escovedo Consulting 59
Nature's Treasures of Texas 58
New Freedom Vapor 58
Northwest Hills Pharmacy 57
Nothing Bundt Cakes 53
Pet Wants 53
Ten Thousand Pots 52
The Natural Gardener 55

827Ray's

KITCHEN + CELLAR



EAT LOCAL. DRINK LOCAL.

New Menus for Business Lunch, Brunch & Dinner

HOST YOUR HOLIDAY PARTIES AT 827RAY'S

call or email info@827rays.com to book

Open 7 days a week

Happy Hour 3 - 6PM Monday thru Friday

All Day Happy Hour on Tuesdays

Sunday Brunch 10AM - 3PM

Reservations & private events welcomed

512.266.9445

3519 Ranch Rd 620 N

827Rays.com



**FREE
APPETIZER**
WITH THE PURCHASE OF
TWO ENTREES

*To receive your Free Appetizer,
please fill out your name and email
address below & present to server.*

COMPLIMENTS OF
CHEF BROOKS

First & Last Name

Email Address

Renting is Easy!

For Your Event, Business or Home

Club-Quality:

Treadmills

Rowers

Spin Bikes

Ellipticals

Dumbbells

more...



always 5-star service



FitDel
Fitness Delivered

Call 512-687-3161

for **50% Off** first month's rent

FitDel.com



CATERING
& DELIVERY
AVAILABLE

CraigO's

PIZZA & PASTARIA

YOUR LOCAL ITALIAN SCRATCH KITCHEN

CRAIGOSITALIAN.COM

LET US CATER YOUR HOLIDAY PARTY!

For more information call 512-402-1600 or

email info@craigoslakeway.com

Valid for Lakeway location only. Not Valid with any other special or offer. Dine in or pick up only Expires 1/15/19

ORDER ONLINE

@craigoslakeway

Monday - Sunday: 11:00 am-9:00pm

2501 Ranch Rd 620 S, Austin, TX 78734 | 512-402-1600

512-402-1600



Ashley & Andrew (Owners)

10% OFF Online Order
USE Coupon Code: **IMPACT**

Valid for Lakeway location only. Not Valid with any other special or offer. Expires 1/15/19

• **HAPPY HOUR 2-7 PM
EVERY DAY**

• **NFL SUNDAY TICKET**
"Every Game, Every Sunday"

• **9 BIG SCREEN TVs,
POOL, DARTS, AND
SHUFFLEBOARD**

• Check our website
and Facebook page at
LTCORNERPUB
for more details



Lakeway's only Irish Pub

1310 RR 620 SOUTH, STE. B-12 • LAKEWAY, TX • UNITED STATES

(In Same Center As The League)

512-961-5674 • www.ltcornerpub.com • www.facebook.com/ltcornerpub

OPEN AT 11:30 AM ALL DAY EXCEPT MONDAYS AT 4:00 PM

**\$5 REUBEN
SANDWICH**

\$4 off regular price (Dine in Only)
Valid thru 1/31/2019

Must present this coupon

**\$7 FISH AND
CHIPS**

\$4 off regular price (Dine in Only)
Valid thru 1/31/2019

Must present this coupon

2019 ANNUAL Community Guide

PACKED FULL WITH TOP STORIES TO FOLLOW IN 2019,
CITY & COUNTY UPDATES, HEALTH CARE NEWS, ANNUAL
COMMUNITY EVENTS AND SO MUCH MORE!

CI COMMUNITYIMPACT.COM

COMING
YOUR WAY
THIS
JANUARY!

CritterRidder TEXAS

Central Texas' Leading Removal & Exclusion Service

Live Animal Trapping • Prevention
Dead Animal Removal
Squirrels • Rats • Raccoons
• Bats • Birds

We also specialize in Attic Cleanup,
Disinfectant, Odor Removal,
Repair & Replacement of Insulation

5% OFF
Up to \$150 in savings.
Must present coupon.
Valid for cash or check
payments only.
Expires 1/31/19

**HUMANE &
CHEMICAL FREE**

512.363.8070 • www.CritterRidderTX.com

UNHAPPY WITH YOUR WATER?



- Better Tasting Water
- Fluffy, Bright Laundry
- Softer Skin and Hair
- Protects the Life of Appliances
- Spot-free Dishes and Glasses
- Use Less Detergent and Chemicals

You could give your people
Culligan Water

CULLIGAN OF AUSTIN
512-309-8585
CulliganofAustin.com

**6 MONTHS
SAME AS CASH**

W.A.C. Only one coupon per customer. Dealer participation may vary. See dealer for details. Limited time offer. Not valid with other offers. ©2018 Culligan International Company.

“Your little artist needs a new canvas.”

If walls could talk, they'd say a lot of things — including they only want to be handled by the professionals at Five Star Painting®.

With our on-site project managers and FREE, no-surprise estimates, it's obvious why your walls prefer Five Star Painting®.

Our Services

- Interior & Exterior Painting
- Cabinet Refinishing
- Popcorn Ceiling & Wallpaper Removal
- Drywall Repair & Retexturing

If walls could talk,
they'd ask for



512-379-6517
FiveStarPainting.com/austin

Check out Google or Yelp to read some of our 700+ reviews

Additional 5% discount for military, first responders, teachers and seniors.

Paint three rooms and get a bathroom painted for
FREE
Average \$300 value
(same scope as other rooms)

\$200 OFF
kitchen cabinet painting

With this ad only. Must Mention Community Impact. Residential projects only. Cannot be combined with any other offers. Not valid on previously quoted work. Expires 1/15/19.

Locally owned and operated.

The largest selection of outdoor pottery & fountains in Austin!

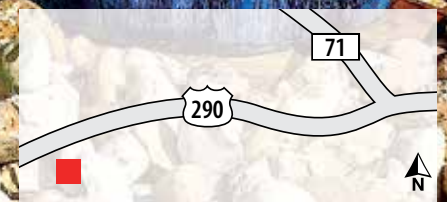
**Ten
Thousand
POTS**

Vietnamese Pottery

9601 Hwy 290 West Austin, TX 78736
Only 4 miles West of the Oakhill Y
(512) 584-8889
www.tenthousandpots.com

10% OFF
your first purchase
when you mention this ad

**Delivery, installation
are available.**





LA BODEGA GOURMET
QUESOS, VINOS Y PAELLA
AUSTIN, TEXAS

Come for dinner at the most popular Spanish Restaurant in town!



Paella, Tapas & More

Lunch Mon-Sat, 11am-2pm
Dinner Wed-Sat, 6pm-9pm

Reservations
512-263-8844

Take Out Holiday's Menu !
Order for Christmas & New Year, \$25 p/person
Roasted Pork, Lamb Chops, Roasted Turkey & Paella

*All dishes comes with 3 side dishes & garlic bread
*Bottle of Cava, Wine, Sangria or Egg Nog with 4 orders or more

Full Menu www.labodegagourmet.com

INTRODUCING



IN LAKEWAY!

NUTRITION YOU CAN TRUST

At Pet Wants, our specially-crafted pet food formulas are cooked on low heat and made in small batches, preserving the vitamins and minerals. The food is made in our plant in Ohio, with a 40-year track-record of no recalls, and the ingredients are tested on three separate occasions before shipping to us.

Why Pet Wants Lakeway?

- ✓ Our food has no corn, wheat, soy, sugar, by-products or fillers
- ✓ We provide the Lakeway Police Departments Kg units with our Pet Wants kibble at no charge to the city
- ✓ 20% OFF for Seniors and Military first Friday of the month
- ✓ We are a natural health food store for pets, also carrying natural treats, toys, chews, house-made organic and all natural spaw products as well as other supplies. We also offer free nutritional consultations.



1310 RR 620 South, Lakeway
(near The League Tavern)
PetWantsAustinWest.com
512-428-5700



\$10 OFF
WITH THE ORDER OF
\$50 OR MORE
(One per customer)
Exp. 1/16/2019

COME IN FOR A
FREE 2LB SAMPLE!
Any recipe, dog or cat food
(in store only)

FREE DELIVERY!



A GARDEN STORE & SO MUCH MORE!

Join us the **1st Saturday** of every month for our

Fairy Garden Workshop

Register online at www.gonursery.com/events | Classes start at 11:00





\$10 OFF

PURCHASE OF \$50 OR MORE.
Limit one coupon per customer per day.
Must present this ad. Exclusions apply.
Expires 1/15/19

LTW

2730 S. Congress • gonursery.com • 512.448.2992

A Slice of Good Cheer



NOTHING bundt Cakes®

\$5 off

purchase of \$25 or more

Austin-South
9600 Ih-35 South, #S-140
Austin, TX 78748
(512) 292-1093

Austin-Westlake
2785 Bee Cave Rd, Suite 333
Austin, TX 78746
(512) 329-8333

WE DELIVER! • NothingBundtCakes.com

Expires 1/19/19. Limit one (1) coupon per guest. Coupon must be presented at time of purchase. \$5 off \$25 before tax. Valid only at the bakery(ies) listed. Valid only on baked goods; not valid on retail items. No cash value. Coupon may not be reproduced, transferred or sold. Internet distribution strictly prohibited. Must be claimed in bakery during normal business hours. Not valid for online orders. Not valid with any other offer.

WILD BIRD CENTER of Lakeway
Perfect gift items to last every season!
 BIRD FEEDERS | SEED | BIRD HOUSES | SUET | BATHS | GIFTS & MORE!

Gifts of Nature!

We have unique gift ideas for all your wild friends!

Gifts for the holidays... and after! Buy for them, and then for yourself!

20% Off
All Feeders!
 Choose from our wide variety and give the gift of nature!
 Valid through 12/24/18

\$10 OFF
A purchase of \$20 or more
 Ask us what will work for all your friends & family!
 Valid through 12/24/18

\$39.99
Gift the entire set-up!
 EZ Cylinder Feeder, Large Seed Cylinder & Rain Guard
 Valid through 1/15/19

Must present coupon. Not valid on prior purchases. Cannot be combined with other offers.

Wild Bird Center of Lakeway | Lakeway Town Center II
 2127 Lohman's Crossing Road, Suite 316 | 512-351-8213 | www.wildbird.com/lakeway

SMART FOOD FOR GOOD PEOPLE

SINCE 1975

ORDER ONLINE FOR PICK-UP!
WWW.THUNDERCLOUD.COM

BUY ONE GET ONE FREE!

Buy one sub, get a second of equal or lesser value free. Limit one coupon per customer. Not valid with other offers. Redeemable only at Bee Cave, Lakeway Four Points and Westlake locations. Exp. 1/31/19.

Only original newsprint coupon may be used for redemption. NO COPIES

THUNDERCLOUD SUBS
WWW.THUNDERCLOUD.COM

FOUR POINTS
 6920 FM620 (near 2222)
 512-335-3663

WESTLAKE
 3201 Bee Cave Rd
 512-328-2114

LAKEWAY
 2300 Lohman's Spur
 512-263-1620

BEE CAVE
 Bee Cave Rd @ SH71
 (In HEB Center near Starbucks)
 512-428-4629

COUPON REDEEMABLE AT BEE CAVE, LAKEWAY, FOUR POINTS & WESTLAKE LOCATIONS ONLY

'Tis the Season for Giving Joy

Still Taking Orders!

Central Austin
 512-480-5999
 507 Pressler St., # 500
 Austin, TX 78703

Lakeway/Bee Cave
 512-937-1744
 Village Oaks
 11905 Bee Cave Rd., # 105-B
 Austin, TX 78738

Save \$10

on purchase of \$59+*

code: CIWL2018
 expires: 12/31/2018

Christmas Star Celebration
 \$74.99 | \$91.99 | \$113.99**
 Product #: 5828

Ultimate Holiday Dipped Fruit™ Platter
 \$79.99
 Product #: 5841

edible® edible.com

**Indicates size shown. *Cannot be combined with any other offer. Restrictions may apply. See store for details. Edible®, Edible Arrangements®, and the Fruit Basket Logo are registered Trademarks of Edible IP, LLC. © 2018 Edible IP, LLC. All Rights Reserved.

Happy Holidays from Café Blue



When the air gets a chill, fill it with holiday cheer and a great night out at Café Blue. Wishing you health, happiness and prosperity as 2019 rolls in!

HAPPY HOUR

All Day Monday | 3pm-6pm Tuesday-Friday

*Half-priced select oysters on the half shell,
shrimp apps and drink specials.*

caféblue
CLASSIC SEAFOOD & OYSTER BAR

DOWNTOWN AUSTIN
512.428.5796

HILL COUNTRY GALLERIA
512.366.5230

CAFEBLUETX.COM

THE Natural GARDENER
Purchase **\$100**
in gift cards
& receive a **free**
\$20 gift card.

Valid for in-store, phone-in, and
online orders.
Offer available through 12/31/2018.

8648 OLD BEE CAVES RD
512.288.6113 | TNGAUSTIN.COM



The Residential Perimeter Security Specialists

AUSTIN ESTATE GATE



SALES ★ REPAIR ★ INSTALLATION

- Automatic Gates
- Telephone Entry
- Radio Controls
- Video Security
- Ornamental Iron
- Wood Fencing
- Rails
- Refurbishing
- Powerwashing
- Replacement Remotes



Buy **ONE** remote, get **ONE FREE!** One coupon per residence (\$50 value)



www.austinestategate.com
anthony@austinestategate.com

512-296-2671

SAME DAY SERVICE AVAILABLE

GRAND OPENING!



LOCATED AT:

3944 S. FM 620 Rd
Bldg 7
Bee Cave, TX



Buy one Bahama Buck's®
Shaved Ice and get one the
same size or smaller FREE!

Limit one coupon per customer per visit. Add-ons extra. May not be
combined with any other coupon, discount, or promotion. Offer valid
at participating Bahama Buck's® locations. Offer expires 1/31/19.

TX1353-1AH11016



Buy one Bahama Buck's®
Smoothie and get one the
same size or smaller FREE!

Limit one coupon per customer per visit. Add-ons extra. May not be
combined with any other coupon, discount, or promotion. Offer valid
at participating Bahama Buck's® locations. Offer expires 1/31/19.

TX1353-1AH11016



LAKEWAY EYE PHYSICIANS & SURGEONS Lakeway Optical Shoppe



CORINA A. STANCEY, M.D. Board Certified Ophthalmologist
LINDSAY T. DAVIS, M.D. Board Certified Ophthalmologist

SUSAN ELIZONDO, O.D.
Therapeutic Optometrist (VSP & EYEMED CREDENTIALLED)

CONTACT LENS SPECIAL!

\$199 CONTACT LENS EXAM AND FITTING,
includes fitting for mono vision and multi-focal contacts.

Bring in this coupon for

FREE TRIAL LENSES



20% DISCOUNT

on both non-RX sunglasses and
RX glasses purchase from our optical boutique

Expires 1/15/19. Not valid with other offers. See an associate for details.

**ENJOY BOTH FREE
SHIPPING & 10%
DISCOUNT**
on year's supply of contacts

CALL NOW! APPOINTMENTS FILLING FAST!

512-402-9919 | 1007 RR620 South, Suite 100, Lakeway, TX 78734

Grass Works

Landscape • Install • Maintenance

512-797-1640

www.grassworksaustin.com

FREE ESTIMATES



IRRIGATION • LANDSCAPE • MAINTENANCE

**YOUR LOCAL
LAWNCARE PROVIDER**
**You Grow It,
We Mow it.**

**\$30
WEEKLY**

Weekly service only.
Mow, Edge, Trim & Blow

**\$140
MONTHLY,
FULL SERVICE**

Large or difficult properties
may be more.
Fertilization, Weeding,
Hedges (12 mos.)

**WINTER
CLEAN-UP
SPECIAL**
**10%
OFF**

512-797-1640

www.grassworksaustin.com



NOW SERVING JAPANESE AND CHINESE CUISINE



**RESERVE
YOUR HOLIDAY
PARTY TODAY!**

**CATERING
AVAILABLE!**

HAPPY HOUR:
4:30PM-6:30PM
7 DAYS A WEEK



FREE

CALIFORNIA ROLL
WHEN YOU BRING IN THIS AD
DINE-IN ONLY
EXPIRATION - 1/15/19
1 COUPON PER TABLE
CANNOT COMBINE WITH ANY OTHER OFFERS

\$5 OFF

ORDER OF \$25 OR MORE!
WHEN YOU BRING IN THIS AD
DINE-IN OR TAKE OUT
EXPIRATION - 1/15/19
1 COUPON PER TABLE
CANNOT COMBINE WITH ANY OTHER OFFERS

1945 Medical Dr., Ste 500 | Lakeway | 512.263.0866 | sakuralakeway.com

HOURS: Mon-Thurs: 11am-9:30pm | Fri-Sat: 11am-10pm | Sun: 12pm-9pm



**\$5 BREWERS CHOICE
BURGER WITH FRIES**

Bring this coupon to the taproom
and get a burger & fries for 5 Bucks!

Expires 12/31/18



TAPROOM HOURS

Thurs 4-7 PM
Fri, Sat, & Sun Noon-7 PM

Last Stand Brewing Company - www.LastStandBrewing.com
12345 Pauls Valley Road, Building J, Austin, TX 78737

TOSCANO

RESTAURANT



Whether you're taking a break from the hustle and bustle of the holidays or celebrating the season with friends and family, Toscano is Lakeway's best spot for food, drinks and cheer.



\$5 HAPPY HOUR 4PM 'til 6:30PM **SUN thru FRI**

TOSCANO

RESTAURANT

2009 MAIN STREET • WWW.TOSCANOLAKEWAY.COM
LOCATED ACROSS FROM HEB IN THE OAKS SHOPPING CENTER
ON THE CORNER OF 620S & MAIN ST

f @TOSCANOATX 512-362-8100

hill country CAKERY

LAKEWAY'S ONLY BOUTIQUE BAKERY

**BUY 3 CUPCAKES
GET 1 FREE!**

Expiration date: January 15, 2019



2127 Lohman's Crossing, Suite 310, Lakeway
hillcountrycakery.com • 512-228-9300

NORTHWEST HILLS AT DAVENPORT

PRESCRIBING AUSTIN'S WONDERFUL
SHOPPING EXPERIENCE FOR OVER 50 YEARS

VISIT US IN OUR NEW SUITE, G200!

Unique Gifts • Personalized Stationery • Luxurious Bath & Body Products
Free Gift Wrapping • Expert Pharmacists • Prescription Delivery*

*Call to ask about our free delivery zones

512-329-8667

3801 N. Capital of Texas Highway, Suite G200
Located at the intersection
of 360 and Westlake Drive
in the Davenport Village Shopping Center

\$10 OFF

PURCHASE OF \$40 OR MORE
(Excludes pharmacy and sale items. Expires 1/15/2019)

www.shopnorthwesthills.com

Weed Alert! Weed Alert! Weed Alert! Weed Alert!



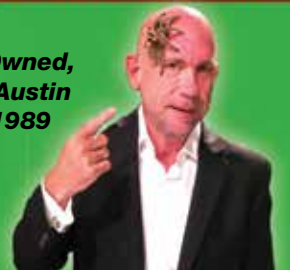
Owner, Jerry Naiser
36 Years Experience, Horticulture
ISA Certified Arborist, TDA Licensed
Texas Forestry Certified for Oak Wilt



512-852-0339
www.RealGreenServices.com

Use Discount Code 0339

**Locally Owned,
Serving Austin
Since 1989**



Mosquito Control
Treatment for mosquitoes, fleas, ticks
and 31 other insects. Probably the
only pest control you will ever need.
Special event sprays.

\$69.99

Compare at \$99
No contracts. Up to 5k sq. ft.
Call for Details. Expires 12/20/2018

Lawn Care
Pre-Emergent, Post-Emergent
Weed Control, Soil Conditioner
Custom Fertilization

\$29.96

Compare at \$79.00
Up to 5K SQ. FT.
New Customers Only
Valid thru 12/20/2018

Horticultural
Ornamental Tree & Shrub Insect
Control, Disease Control and
Custom Fertilization

\$36.38

Compare at \$84.00
Call for details. New Customers
Only. Valid thru 12/20/2018

Pest Control
Includes: Spiders, Fleas, Ticks,
Roaches, Ants, Silver Fish,
Scorpions And Much, Much More!

\$29.00

Per Month Program
Only 1/2 Off Initial Treatment
Most Average Size Homes
Valid thru 12/20/2018

**What's the "Real" Difference?
More Green, Less
Weeds, Less Money!**

*See website
for details.



Other Companies
Program

Custom blended balanced fertilizers for Austin's soil	YES	NO
Water Saving Surfactants included at no charge	YES	NO
Noticeable Improvement or service is Free*	YES	NO
Dallisgrass treatment at no extra charge	YES	NO
Weed Treatment for both broadleaf and grassy weeds	YES	NO
Always use the least toxic approach	YES	NO



**CELEBRATING
life EVERYDAY**











SWEET CREPES | SAVORY CREPES | BRUNCH CREPES
PANINI | GOURMET BURGERS | SALADS | SOUPS

FREE 12 OZ. HOT DRIP COFFEE
NO PURCHASE NECESSARY. EXPIRES 1/15/2019.

15% OFF DINNER TAB
AVAILABLE DAILY AFTER 3PM. EXPIRES 1/15/2019.

NEW HOURS OF OPERATION
 MON. 7AM - 8PM • TUES. 7AM - 8PM • WED. 7AM - 8PM • THUR. 7AM - 8PM • FRI. 7AM - 9PM • SAT. 8AM - 9PM • SUN. 8AM - 9PM
 2011 Main Street, Suite 500 | Lakeway, TX 78734 | 512-953-5334 | vivelcrepes.com

"We Rock"
Nature's Treasures
 4103 N. Interstate 35 • Austin, TX 78722 • 512.472.5015

12 Days of Giving Sale!

Miss one of our 12 Days of Giving Daily Sales?

Redeem this coupon for 25% off one of our discontinued gift ideas!

Some exclusions apply. Coupon not valid with any other offer. One coupon per customer per day. Must present coupon at time of purchase. Valid Only 12/14/18 - 12/24/18.

LTW

30% Off a Single Regular Priced Item

Some exclusions apply. Coupon not valid with any other offer. One coupon per customer per day. Must present coupon at time of purchase. Expires 12/31/18.

LTW



Shop Online at NTRocks.com

Vaping

95% LESS HARMFUL THAN SMOKING*
-Public Health England



NEW FREEDOM vapor

Safer for you and your loved ones

Give the gift of **FREEDOM** this holiday season!

Hand crafted juices:
 Made in Austin • 100+ Flavors
 Made to Order • Customizable
 FDA Registered

CBD:
 Non-Psychoactive/THC Free
 Tinctures • Vape Pens • Body Lotion
 Cooling Cream • Muscle Salve

HOLIDAY OFFERS
redeemable online or in-store

<p>Get 30% Off</p> <p>NFV Hand Crafted Juice with Promo Code "Handcraft" Exp. 1/15/19</p>	<p>Get 20% Off</p> <p>Entire Order with Promo Code "20off" Exp. 1/15/19</p>	<p>10% Off</p> <p>All CBD products with Promo Code "CBDDeal" Exp. 1/15/19</p>
---	---	---

Order online or over the phone
NewFreedomVapor.com • 512.655.3244
 FREE standard shipping for purchases over \$50. Ships anywhere in the US

Lakeway
 325 RR 620 South, Austin, TX 78734

Bee Cave
 13908 Hwy 71 West, Bee Cave, TX 78738

WARNING: This product contains nicotine. Nicotine is an addictive chemical.

* "None of the studies reviewed above alter the conclusion of Professor Britton's 2014 review for PHE. While vaping may not be 100% safe, most of the chemicals causing smoking-related disease are absent and the chemicals which are present pose limited danger. It has been previously estimated that EC are around 95% safer than smoking. This appears to remain a reasonable estimate."



We'll help him
find the
perfect gift

Introducing the
JEWELRY WISH LIST
at Home Consignment Center

Check out our wide selection of jewelry...
try on as much as you'd like!

Choose your top 10 pieces and create
your "jewelry wish list."

We keep the list on file and he surprises
you with something from your list.

Less stress for him and you're
sure to get a gift that you'll love.

It's just that easy!



Diamonds • Rings • Necklaces • Pendants • Earrings • Bracelets



Bee Cave
12812 Shops Pkwy. Ste. 100
512.263.4600

Beecave@hccenter.com

Hours: 10am-6pm M-Sat • 12pm-5pm Sundays
www.thehomeconsignmentcenter.com

In business since 1994
with 17 locations
including
San Antonio, Austin
The Woodlands,
& McKinney

Before you hear the heartbeat, we hear you

Ascension® care teams at Seton listen to you as a woman and an expecting mom. We take the time to understand the care you need, including any special care. Then, together we create a care plan that's right for you, your baby, and your family.

Visit setonbaby.com

